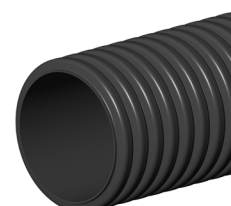


DATA SHEET

SOLFLO MAX

PRODUCT DESCRIPTION : Rigid dual wall pipe, with smooth interior and corrugated exterior walls for roadway use.

FUNCTION : Non-perforated pipe: Gravity flow of water in networks and water course piping.
Perforated pipe: Used to collect surface runoff and control the ground water level.



MANUFACTURING STANDARDS : BNQ 3624-120, CSA B182.8, ASTM 2648, ASTM 2306 or AASHTO M294

RAW MATERIAL : Made from high-density polyethylene (HDPE) complies with properties classification of ASTM D3350 standard

TECHNICAL DATA : Structural strength: CAN/CSA - S6 - 02 (CL-625), AASHTO (H-25 and HS-25) and AREMA Cooper (E-80)
Filter: Needle punched nonwoven geotextile Rutex IV with 110-micron openings

TECHNICAL DATA

Diameter				Manning		Category ¹		Weight		Minimum backfill				Maximum backfill						
Nominal		Interior		Outside		n	Class A	Class B			CL-625		E-80		CL-625		E-80			
mm	in	mm	in	mm	in						kg/m	lb/ft	m	ft	m	ft	m	ft	m	ft
100	4	101	4,0	120	4,7	0,010	R320		1,0	0,7	0,3	1,0	0,6	2,0	20,0	65,6		8,5	27,9	
150	6	150	5,9	176	6,9	0,010	R320		1,6	1,1	0,3	1,0	0,6	2,0	19,0	62,3		8,5	27,9	
200	8	205	8,1	236	9,3	0,010	R320		2,8	1,9	0,3	1,0	0,6	2,0	18,0	59,1		7,9	25,9	
250	10	251	9,9	297	11,7	0,010	R320		4,5	3,0	0,3	1,0	0,6	2,0	18,0	59,1		7,9	25,9	
300	12	303	11,9	363	14,3	0,010	R320	R210	6,0	4,0	0,3	1,0	0,6	2,0	17,0	55,8	16,0	52,5	8,5	27,9
375	15	381	15,0	449	17,7	0,010	R320	R210	8,0	5,3	0,3	1,0	0,6	2,0	17,0	55,8	17,0	55,8	8,8	28,9
450	18	457	18,0	544	21,4	0,010	R320	R210	13,0	8,7	0,3	1,0	0,6	2,0	17,0	55,8	17,0	55,8	7,9	25,9
525	21	535	21,1	640	25,2	0,012	R320	R210	18,0	12,1	0,3	1,0	0,6	2,0	16,0	52,5	16,0	52,5	7,6	24,9
600	24	603	23,7	741	29,2	0,012	R320	R210	20,0	13,4	0,3	1,0	0,6	2,0	15,0	49,2	15,0	49,2	7,3	24,0
750	30	756	29,8	890	35,0	0,012	R320	R210	36,0	24,2	0,3	1,0	0,6	2,0	15,0	49,2	13,0	42,7	6,1	20,0
900	36	912	35,9	1046	41,2	0,012	R320	R210	55,0	37,0	0,3	1,0	0,9	3,0	15,0	49,2	13,0	42,7	6,7	22,0
1050	42	1067	42,0	1224	48,2	0,012	R140		45,0	30,2	0,3	1,0	1,2	3,9	13,0	42,7			6,7	22,0
1200	48	1220	48,0	1377	54,2	0,012	R125		60,0	40,3	0,3	1,0	1,2	3,9	13,0	42,7			5,8	19,0
1500	60	1512	59,5	1677	66,0	0,012	R95 ²			47,0	0,5	1,6	1,2	3,9	11,0	36,1			6,4	21,0

Note 1: For reference, a R320 category (class A) pipe will have a minimum compression stiffness of 320 kPa at 5% deformation.

Note 2: R95 refers to the categorization of BNQ 3624-120 and CSA B182.8 standards.

Notes : - For reference, a R320 category (class A) pipe will have a minimum compression stiffness of 320 kPa at 5% deformation.

- 100 mm (4 in) to 1200 mm (48 in) pipes are certified BNQ 3624-120 and CSA B182.8 standards. AASHTO M294 certified pipes are available upon request.*

- 1500 mm (60 in) pipe complies to AASHTO M294, ASTM F2648, ASTM 2306, AASHTO 294 et BNQ 3624-120.*

- Values in the tables are approximate and may change without notice.

*Please contact your Soleno representative for more information.

DATA SHEET

SOLFLO MAX (CONT'D)

LENGTHS TABLE - CLASS A according to available couplers

Nominal Diameter		No coupler		Soil tight couplers						Watertight couplers					
		Plain		BC		DBS		SC		BIGC ¹		BG		DBIG ¹	
mm	in	m	ft	m	ft	m	ft	m	ft	m	ft	m	ft	m	ft
100	4	6	19,7			6	19,7	6	19,7					4/6	13,1/19,7
150	6	6	19,7			6	19,7	6	19,7					4/6	13,1/19,7
200	8	6	19,7			6	19,7	6	19,7					4/6	13,1/19,7
250	10	6	19,7			6	19,7	6	19,7					4/6	13,1/19,7
300	12	6/9	19,7/29,5	6	19,7			6/9	19,7/29,5	4/6	13,1/19,7				
375	15	6/9	19,7/29,5	6	19,7			6/9	19,7/29,5	4/6	13,1/19,7				
450	18	6/9	19,7/29,5	6	19,7			6/9	19,7/29,5	4/6	13,1/19,7				
525	21	6/9	19,7/29,5	6	19,7			6/9	19,7/29,5	4/6	13,1/19,7				
600	24	6/9	19,7/29,5	6	19,7			6/9	19,7/29,5	4/6	13,1/19,7				
750	30	6/9	19,7/29,5	6	19,7			6/9	19,7/29,5	4/6	13,1/19,7				
900	36	6/9	19,7/29,5	6	19,7			6/9	19,7/29,5	4/6	13,1/19,7				
1 050	42							coupler available ²				3,3	10,8		
1 200	48	6/9	19,7/29,5	6	19,7			6/9	19,7/29,5	4/6	13,1/19,7				
1 500	60											6	19,7		

Note 1: BIGC and DBIG connectors are available for non-perforated pipe only.

Note 2: The split coupler is available, although the 1050 mm (42 in) pipe is only available with BG type coupler.

LENGTHS TABLE - CLASS B according to available couplers

Nominal Diameter		No coupler		Soil tight couplers			
		Plain		BC		SC	
mm	in	m	ft	m	ft	m	ft
300	12	6/9	19,7/29,5	6	19,7	6/9	19,7/29,5
375	15	6/9	19,7/29,5	6	19,7	6/9	19,7/29,5
450	18	6/9	19,7/29,5	6	19,7	6/9	19,7/29,5
525	21	6/9	19,7/29,5	6	19,7	6/9	19,7/29,5
600	24	6/9	19,7/29,5	6	19,7	6/9	19,7/29,5
750	30	6/9	19,7/29,5	6	19,7	6/9	19,7/29,5
900	36	6/9	19,7/29,5	6	19,7	6/9	19,7/29,5

LEGEND

Plain : plain end
BC : bell with clips
DBS : double bell snap
SC : split couplers
BIGC : bell with integrated gasket
BG : o-ring bell gasket
DBIG : double bell with integrated gasket

APPLICATIONS : Driveway culvert, culvert, stormwater sewer, beaver barrier, ventilation, ditch piping, roadway drainage, drainage collector and outlet, detention or retention system and trench drain.

OPTIONS : Special lengths are available (upon request)

Beveled cut
 Welded coupler for service entrance or connecting to cath basin
 Fish weir

INSTALLATION : Visit solen.com to consult the installation guide.

Notes : - Values in the tables are approximate and may change without notice.
 - Lengths in the table have a tolerance between -1 % to 3 %.