

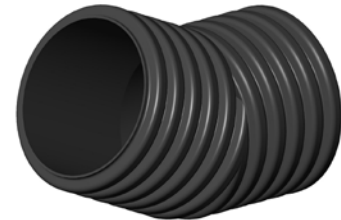
DATA SHEET

ELBOW 22.5°

PRODUCT DESCRIPTION: Factory-made elbow

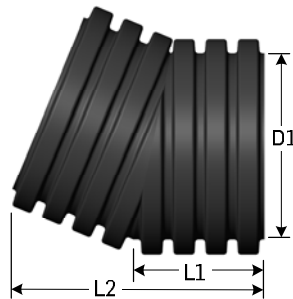
FUNCTION: Change direction of a pipe

MANUFACTURING STANDARDS: *100 mm (4 in) to 900 mm (36 in) diameter pipes:*
Made from pipes that meet standards BNQ 3634-120 (R320). On special order, made from pipes that meet standards CSA B182.8, AASHTO M252 or AASTHO M294
1050 mm (42 po) to 1200 mm (48 po) diameter pipes:
Made from pipes that meet standards CSA B182.8 and AASHTO M294



RAW MATERIALS: Made of high density polyethylene (HDPE) ASTM D3350

AVAILABLE FITTINGS: Fits any Solflo Max fitting



TECHNICAL DATA TABLE

Diameter D1		Length L1		Length L2		No connector	Soil tight connectors HDPE				Watertight connectors HDPE			
mm	in	mm	in	mm	in	PE	BC	DBS	DBC	SC	BIGC	BG	DBIG	DBIGC
100	4	101	3.98	195	7.68	X		X		X				X
150	6	135	5.31	259	10.20	X		X		X				X
200	8	173	6.81	333	13.11	X		X		X				X
250	10	226	8.90	434	17.09	X		X		X				X
300	12	357	14.06	685	26.97	X			X	X				X
375	15	271	10.67	522	20.55	X	X			X	X			
450	18	325	12.80	612	24.09	X	X			X	X			
525	21	363	14.29	687	27.05	X	X			X	X			
600	24	473	18.62	890	35.04	X	X			X	X			
750	30	482	18.98	917	36.10	X	X			X	X			
900	36	498	19.61	959	37.76	X	X			X	X			

Note 1 : Dimensions shown above may vary slightly

Note 2 : For non-standard dimensions (1050 mm and 1200 mm (42 in and 48 in)), contact your Soleno representative.

LEGEND

PE: plain end
BC: bell with clips
DBS: double bell snap
DBC: double bell with clips

SC: split coupler
BIGC: bell with integrated gasket with clips
BG: O-ring bell gasket

DBIG: double bell with integrated gasket
DBIGC: double bell with integrated gasket with clips