

# DETENTION/RETENTION SOLFLO MAX SYSTEM

---

## INSTALLATION GUIDE

INSTALLATION INSTRUCTIONS FOR A PIPE-BASED BASIN

### STEPS

1. Before undertaking the work
2. Inspection of the materials
3. Identification of special parts
4. Site preparation
5. Assembly
6. Basin assembly
7. Backfilling
8. Connection
9. Finishing

## STEP 1 BEFORE UNDERTAKING THE WORK

---

Contact your Soleno representative at least 48 hours before work begins.

## STEP 2 INSPECTION OF THE MATERIALS

---

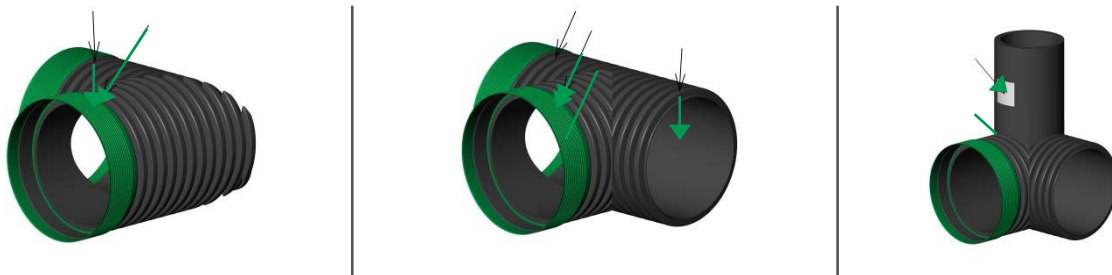
Upon receipt of the merchandise, make sure that all items specified in the shop drawing are delivered. Handle parts carefully.



## STEP 3 IDENTIFICATION OF SPECIAL PARTS

---

Each special part (other than a pipe of standard length) is identified by a letter (on the last ring or on the access port). These identified items must be installed in accordance with the shop drawing.



## STEP 4 PREPARE THE BEDDING

---

Level and compact the bedding at the bottom of the trench, following the specifications requirements (material, thickness and compaction).

## STEP 5 ASSEMBLY

---

For ease of assembly, pipe grease can be used. Also, to facilitate insertion of the pipes, a waste pipe section or plywood panel can be used.



## STEP 6A BASIN ASSEMBLY

---

Begin assembly of the basin starting from the outlet (unless otherwise indicated on the shop drawings). Connect the discharge duct to the outlet collector. Complete assembly of the outlet collector.



## STEP 6B

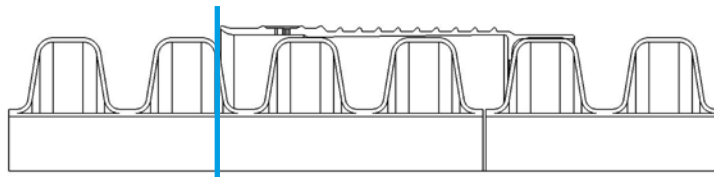
### BASIN ASSEMBLY

Insert each length of the first section.

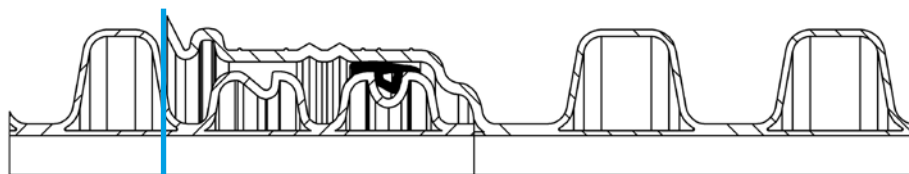


**Make sure these pipes are fully inserted until the insertion line:**

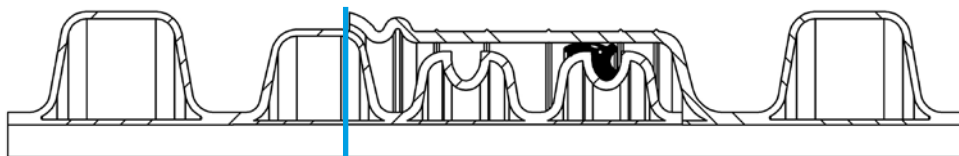
- diameter of 300 mm (12 in) to 900 mm (36 in)



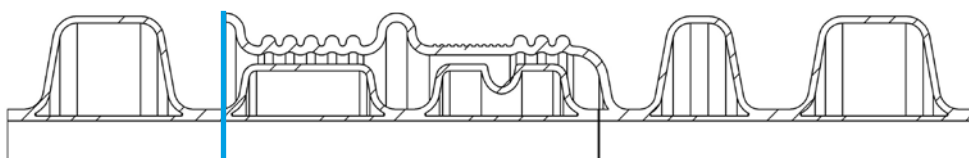
- diameter of 1050 mm (42 in)



- diameter of 1200 mm (48 in)



- diameter of 1500 mm (60 in)

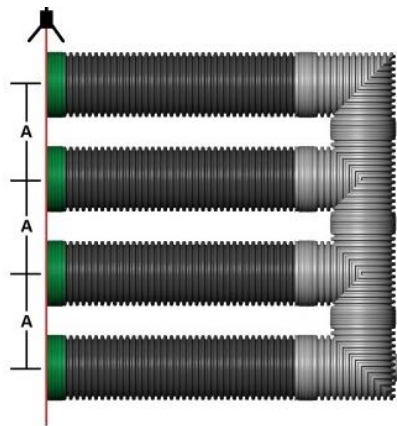


Do not hesitate to enter into the pipe to inspect the joints from inside and to make sure there remains no space.

## STEP 6C BASIN ASSEMBLY

---

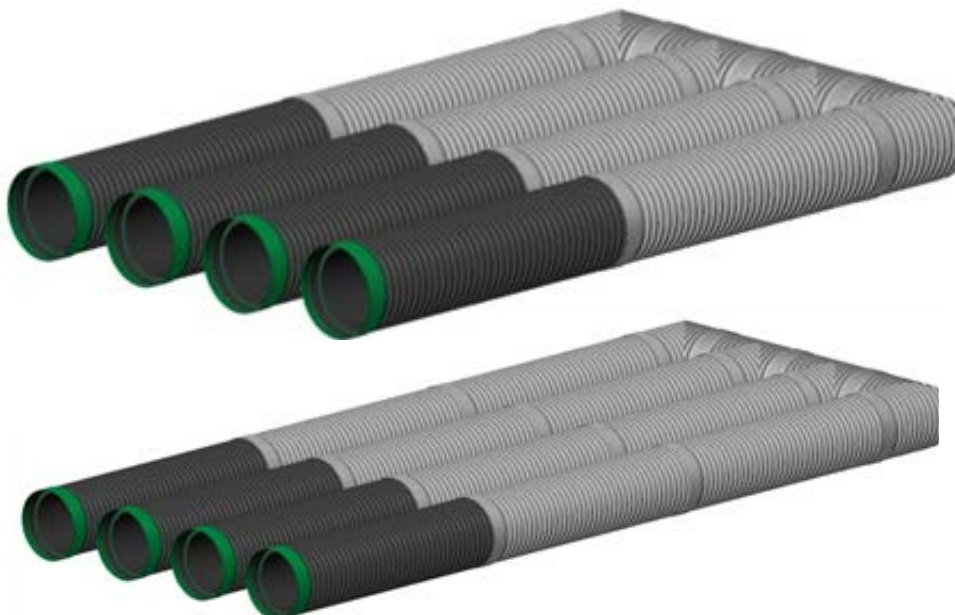
Once the assembly of a completed section is done, check the parallelism between the rows. Also make sure that the rows have the same length.



## STEP 6D BASIN ASSEMBLY

---

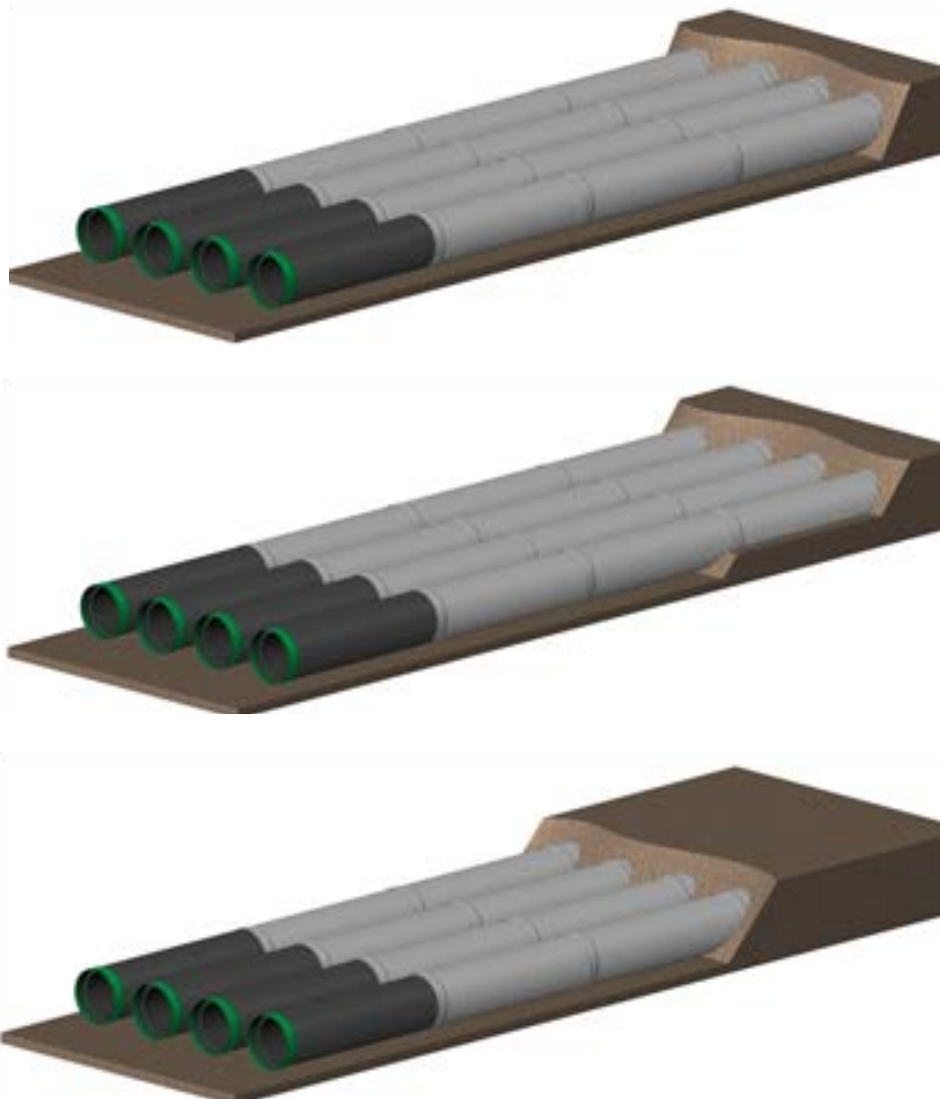
Insert the following lengths, section by section, by making the checks described in step 6C after each section



## STEP 7 BACKFILL

---

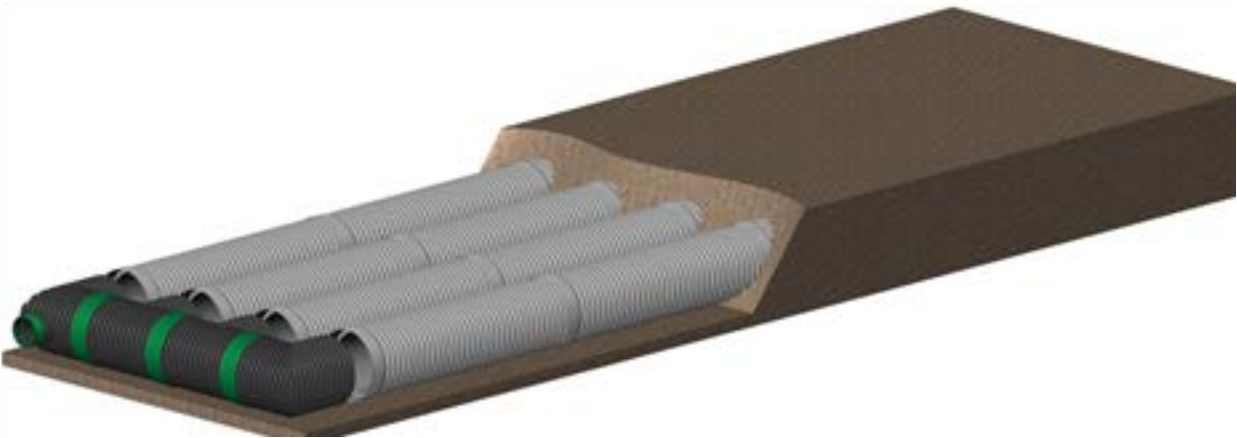
Backfill and compact progressively as required in the specifications, making sure to keep the last 3 sections open to allow final adjustments. During backfilling, ensure an equal fill height on each side of the pipe.



## STEP 8 CONNECTION

---

If possible, pre-assemble the inlet collector and connect it to the pipes of the last section.



## STEP 9 FINISHING

---

Complete the backfilling according to the specifications requirements. Make sure you have the minimum backfill height before circulating over the basin: 300 mm (12 in) for 1200 mm diameters (48 inches) or less and 500 mm (18 in) for the 1500 mm (60 in) diameter.