

DATA SHEET

CONCRETE CDS®

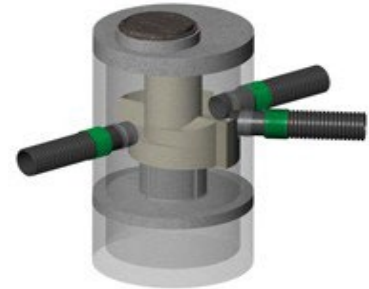
PRODUCT DESCRIPTION : Continuous deflection hydrodynamic separator

FUNCTION : System that maximizes removal of Total Suspended Solids (TSS), oils and floating debris from surface runoff before it is conveyed to an outlet.

MANUFACTURING STANDARDS : Pre-cast concrete, reinforced steel and rubber gasket meeting the requirements of BNQ 2622-420

RAW MATERIALS : Structure : 30 MPa concrete after 28 days
Separation screen : type 316 and 316L stainless steel, ASTM F 1267-01
Treatment device : fiberglass ASTM D-4097

TECHNICAL DATA : Diameters: 900 mm (36 in) to 3600 mm (144 in)
Standard height: custom-made
Structural strength: CAN/CSA - S6 - 02 (CL-625) and AASHTO (H-25 and HS-25)



CONCRETE CDS-5
with 2 inlets

TECHNICAL DATA TABLE

Model	Diameter						Height				Floor area		Weight of the internal treatment device		Maximum weight of the heaviest component ⁽¹⁾		Surface access		
	Nominal		Interior		Outside		Standard (between outlet invert and the bottom of the system)		Minimum (between outlet invert and the top concrete slab)										
	mm	in	mm	in	mm	in	mm	in	mm	in	m ²	ft ²	kg	lb	kg	lb	Un.	mm	in
CDS-3	900	36	915	36	1156	46	1269	50	1519	60	0,7	7,1	27	59,5	2000	4409	1	750	30
CDS-4	1200	48	1220	48	1511	59	1372	54	1519	60	1,2	12,6	77	169,8	3100	6834	1	750	30
CDS-5	1500	60	1525	60	1866	73	1600	63	1519	60	1,8	19,6	105	231,5	5500	12125	1	750	30
CDS-6	1800	72	1830	72	2223	88	1893	75	1519	60	2,6	28,3	211	465,2	6000	13227	2	600	24
CDS-7	2100	84	2140	84	2578	101	2361	93	1519	60	3,6	38,5	271	597,4	7000	15432	2	600	24
CDS-8	2400	96	2440	96	2934	116	2515	99	1519	60	4,7	50,3	349	769,4	11000	24251	2	600	24
CDS-10	3000	120	3050	120	3550	140	3023	119	2129	84	7,3	78,6	533	1175,1	22000	48502	2	600	24
CDS-12	3600	144	3600	142	4298	169	3835	151	2129	84	10,2	109,6	628	1384,5	28000	61729	2	600	24

Note 1 : The weights are given for information only. It is important to refer to the shop drawings for the actual weights.

Note 2 : Values in the table are approximate and may change without notice.

Note 3 : Contact your cast iron supplier for the exact dimensions of available frames and grates.

Note 4 : The exterior faces of the CDS-10 are octagonal. Inlet and outlet angles must be in multiples of 45 degrees.

Note 5 : For the CDS-10 and CDS-12, the maximum diameter of the inlet and outlet pipes is 900 mm. For any larger diameter, please contact your Soleno representative.

DATA SHEET

CONCRETE CDS® (CONT'D)

DESIGN DATA TABLE

Model	Maximum treatment flow (as per ETV Canada)		Maximum peak flow ⁽¹⁾		Sediment storage capacity		Oils storage capacity		Max. nominal diameter of the connection pipe ⁽²⁾		Separation screen			
											Diameter		Height	
	l/s	ft ³ /s	l/s	ft ³ /s	m ³	ft ³	liters	gallons	mm	in	mm	in	mm	in
CDS-3	5,1	0,2	425	15	0,4	14,1	127	34	450	18	470	18,5	457	18,0
CDS-4	9,2	0,3	566	20	0,7	24,7	232	61	600	24	648	25,5	508	20,0
CDS-5	14,3	0,5	708	25	1,0	35,3	376	99	750	30	686	27,0	686	27,0
CDS-6	20,6	0,7	850	30	1,6	56,5	895	236	900	36	927	36,5	927	36,5
CDS-7	28,1	1,0	991	35	2,2	77,7	1426	377	1050	42	1080	42,5	1092	43,0
CDS-8	36,6	1,3	1133	40	4,3	151,9	1970	520	1200	48	1232	48,5	1245	49,0
CDS-10	57,3	2,0	1416	50	6,7	236,6	3652	965	900	36	1721	67,8	1651	65,0
CDS-12	82,4	2,9	1699	60	12,8	452,0	6918	1828	900 ⁽³⁾	36 ⁽³⁾	1842	72,5	2159	85,0

Note 1 : Maximum peak flows are calculated based on a standard internal cylinder height.

Note 2 : Note that the maximum diameter is indicated for a configuration with one inlet and one outlet. For a different configuration, please contact your Soleno representative.

Note 3 : The maximum diameter changes to 1500 mm with joint grouting.

Note 4 : Values in the table are approximate and may change without notice.

APPLICATIONS : Control of TSS, oils and floating debris by hydrodynamic separation

Storm water sewer

Treatment and pretreatment

OPTIONS : Special fittings available on request

Adjustable frame and cover

Collecting grate(deflector pan included)

Fiberglass central cylinder extension