



SOLENO

MASTERING WATER SUSTAINABLY

2024 RETAIL PRICE LIST ONTARIO



TABLE OF CONTENTS

CONTACTS	7
FREIGHT POLICY	8
PICK-UP POLICY	9
RETURN MERCHANDISE POLICY	10
TRANSPORTATION SERVICE FOR THE RETURN OF MERCHANDISE	11
GENERAL SALES TERMS AND CONDITIONS	12
GENERAL SALES TERMS AND CONDITIONS (CONT.)	13
DRAIN	
75 mm (3 in)	14
100 mm (4 in)	14
150 mm (6 in)	14
200 mm (8 in)	14
250 mm (10 in)	15
SOLIFLEX	
100 mm (4 in)	16
SMOOTH INTERIOR FLEXIBLE CORRUGATED DRAIN	
200 mm (8 in)	17
250 mm (10 in)	17
300 mm (12 in)	17
375 mm (15 in)	17
Split Coupler	17
DRAIN ACCESSORIES	
Internal Coupler	18
Double Bell Snap	18
Split Coupler	18
Internal End Cap	18
External End Cap	19
90-Degree Elbow	19
External Reducer	19
Tee	19
Reducing Tee	20
Tee-Wye (Y)	20
Internal Tee	20
Wye (Y) And Wye (Y) Reducer	21
Down Spout Adapter	21
Drain Pipe Universal Adapter	21
HDPE Adapter For PVC	21
Extensible Tape (White)	22
Extensible Tape (Black)	22
Grate With Small Holes	22
Plastic Grate Disc	22
Stainless Steel Reinforced Plastic Grate	23
Stainless Steel Fork Grate	23
Stainless Steel Inside Grate	23
Aluminium Grate	24
Small Hole Vertical Drain (Hickenbottom)	24
Large Hole Vertical Drain (Hickenbottom)	24
Vertical Drain Tee	25
Vertical Drain Reducer	25
Tap Tee	25
Drainage Flag	26
Drainage Outlet Sign	26

TABLE OF CONTENTS

Galvanized Steel Post	26
Drainage Outlet With Fork Grate	26
Non-Return Valve Outlet	27
Drainage Outlet With External Round Grid	27
Slide Valve	27
Water Control Structure	27
Drainage Access Chimney	28
FLOOR DRAIN AND SUMPWELL CATCH BASIN	
Sump Well	29
Sump Well Cover	29
Radon Sump Basin	29
Radon Sump Basin Cover	29
Fibro-Drain Floor Drain	30
Fibro-Drain Radon Floor Drain	30
Tuf-Tite Floor Drain	30
SOLFLO (CORRUGATED INTERIOR AND EXTERIOR)	
100 mm (4 in)	31
150 mm (6 in)	31
200 mm (8 in)	31
300 mm (12 in)	31
SOLFLO MAX (SMOOTH INTERIOR AND CORRUGATED EXTERIOR) - R210	
300 mm (12 in)	32
375 mm (15 in)	32
450 mm (18 in)	32
525 mm (21 in)	32
600 mm (24 in)	32
750 mm (30 in)	32
900 mm (36 in)	32
TURBULENCE	
450 mm (18 in)	33
600 mm (24 in)	33
750 mm (30 in)	33
SOLFLO MAX (SMOOTH INTERIOR AND CORRUGATED EXTERIOR) - R320	
100 mm (4 in)	34
150 mm (6 in)	34
200 mm (8 in)	34
250 mm (10 in)	34
SOLFLO MAX (SMOOTH INTERIOR AND CORRUGATED EXTERIOR) - R320	
300 mm (12 in)	35
375 mm (15 in)	35
450 mm (18 in)	35
525 mm (21 in)	35
600 mm (24 in)	35
750 mm (30 in)	35
900 mm (36 in)	35
SOLFLO MAX (SMOOTH INTERIOR AND CORRUGATED EXTERIOR)	
1050 mm (42 in)	36
1200 mm (48 in)	36
1500 mm (60 in)**	36
TRIPLEFLO	
100 mm (4 in)	36
SOLFLO AND SOLFLO MAX COUPLINGS AND ACCESSORIES	

TABLE OF CONTENTS

Split Coupler	37
Clamp Coupling	37
Repair Coupling	38
MarMac PolySeal Coupler	38
MarMac Clamping Tool	38
Double Bell	39
End Cap	40
O-Ring Gasket (HDPE to HDPE)	41
PVC Transition O-Ring Gasket (HDPE to PVC)	41
22.5 Degree Elbow	42
45 Degree Elbow	43
90 Degree Elbow	44
90 Degree Elbow - 3 Sections	45
Cross	46
Cross-Reducer	47
Cross-Reducer	48
Reducer	49
Reducer	50
Tee	51
Reducer Tee	52
Reducer Tee	53
Wye (Y)	54
Wye (Y) Reducer	55
Wye (Y) Reducer	56
Manhole Adapter - PVC Format	57
Manhole Adapter For Concrete Entry	57
Universal Sol-Tee	58
Universal Sol-Tee Saw Bit	58
Flared End - HDPE	59
Flared End - Steel	59
Sacrificial Pipe	60
Steel Cross	60
<u>BEVELLED PIPE</u>	
Pipe with Bevelled End	61
Bevelled Cut	61
<u>SLUICE PIPE</u>	
Pipe	62
Anchor	62
<u>BEAVER BARRIER</u>	
Barrier	63
Anchor	63
<u>ENVIRO-SPAN</u>	
Straight Module	64
Angle Module	64
Connector	64
<u>CHANNEL</u>	
Hauraton Recyfix Pro & NC Channel	65
Hauraton Recyfix Pro & NC Vertical Drain	66
Hauraton Recyfix Pro & NC Accessories	66
Hauraton Top X Channel	67
Hauraton Top X Accessories	67
<u>KUSTOMFLO</u>	

TABLE OF CONTENTS

Pipe	68
Gasket	68
<u>SMOOTH EXTERIOR CATCH BASIN</u>	
Catch Basin	69
Additional Height	69
Catch Basin 600 mm (24 in)	69
<u>SMOOTH EXTERIOR MANHOLE</u>	
Manhole 750 mm (30 in) - 900 mm (36 in)	70
Manhole 1050 mm (42 in) - 1500 mm (60 in)	70
Additional Height	70
<u>CORRUGATED MANHOLE/CATCH BASIN</u>	
Catch Basin 300 mm (12 in) - 900 mm (36 in)	71
Catch Basin 1050 mm (42 in) - 1500 mm (60 in)	71
Additional Height	71
<u>SMOOTH EXTERIOR PRETREATMENT CATCH BASIN</u>	
Catch Basin	72
Interior Elbow Of The Pretreatment Catch Basin	72
<u>PERCOLATION CATCH BASIN</u>	
Catch Basin	73
<u>LINEAR CATCH BASIN</u>	
Catch Basin	74
<u>MANHOLE/CATCH BASIN ACCESSORIES</u>	
Connection	75
Galvanized Steel Ladder	75
Lifting Eyelet	75
Storm Sewer Trap Cover	76
Hook For Retention Bell	76
HDPE Grid	76
Fusion Box	77
<u>CAST IRON</u>	
Frame And Grate Kit	78
Frame And Cover Kit	78
Frame And Curved Grate Kit	78
<u>RISER FOR MANHOLE/CATCH BASIN WITH SMOOTH EXTERIOR WALL</u>	
2 Corrugation Riser	79
3 Corrugation Riser	79
<u>MONOLITHIC CATCH BASIN INLET / CONNECTION</u>	
Welded Connection On Main Pipe	80
<u>TANK</u>	
Unit	81
Chimney	81
<u>SETTLING AND SEPARATION TANK FOR STORM WATER</u>	
Unit	82
Riser (from 0.3 m to 1 m in height)	83
Riser (over 1 m in height)	83
Cast Iron	83
<u>RETENTION CHAMBER - STORMCHAMBER</u>	
Chamber SC-18	84
Chamber SC-34E	84
Chamber SC-44	84
<u>RETENTION CHAMBER - HYDROSTOR</u>	
Chamber	85

TABLE OF CONTENTS

End Cap	85
<u>RETENTION CHAMBER - ECOCHAMBER</u>	
Chamber	86
<u>CHAMBER ACCESSORIES</u>	
Sediment Trap	87
Inspection Port	87
Geotextile	87
<u>PRETREATMENT UNIT</u>	
Unit	88
Inlet	88
Outlet To Chamber	88
Outlet To Diffuser	89
Riser (from 0.3 m to 1 m in height)	89
Riser (over 1 m in height)	89
Cast Iron	89
<u>PLASTIC GEOCELLULAR STORMWATER MANAGEMENT SYSTEM STORMBRIXX</u>	
StormBrixx	90
<u>RETENTION BASIN - 900 mm (36")</u>	
Components	91
<u>RETENTION BASIN - 1200 mm (48")</u>	
Components	92
<u>CORRUGATED GALVANIZED STEEL PIPE (CSP)</u>	
38 mm x 6.5 mm Corrugation Profile (1.5 in x 0.256 in)	93
68 mm x 13 mm Corrugation Profile (2.68 in x 0.51 in)	93
125 mm x 26 mm Corrugation Profile (4.92 in x 1.02 in)	93
<u>ALUMINIZED CORRUGATED STEEL PIPE (ACSP)</u>	
38 mm x 6.5 mm Corrugation Profile (1.5 in x 0.256 in)	94
68 mm x 13 mm Corrugation Profile (2.68 in x 0.51 in)	94
125 mm x 26 mm Corrugation Profile (4.92 in x 1.02 in)	94
<u>STEEL ACCESSORIES</u>	
Steel Eyelet	95
Nuts And Bolts	95
<u>REMOVABLE FISH WEIR</u>	
For Steel Pipe	95
<u>GEOTEXTILES</u>	
Epurtex	96
TX-80	96
TX-170 - BNQ Certified	96
TX-F	96
<u>FLOW REGULATOR</u>	
Plug Style Flow Regulator	97
Plate Flow Regulator	97
Vortex Flow Regulator	97
Check Valve	97

SOLENO

THE TEAM
AVAILABLE AND SPECIALIZED

At Soleno, solution excellence is based on our **specialized consulting services** and our expertise developed over the years with designers, network managers and contractors responsible for the installation and maintenance of civil infrastructure.

Our engineers are available to help you identify and implement the best management practices for protecting water resources that may be adversely affected by runoff in rural or urban environments.

Our customer service team, supported by highly efficient transport management, ensures the smooth running of all projects.



CONTACTS

Headquarters

Soleno inc.
1160, route 133
St-Jean-sur-Richelieu, QC J2X 4B6
CANADA
T 450.347.7855
F 450.359.4150

Internal Sales

Toll free : 877.633.7473
T 450.347.7855
F 450.347.0684
clientele@soleno.com

Plants and distribution centers

St-Jean-sur-Richelieu

1160, route 133
St-Jean-sur-Richelieu, QC J2X 4B6
CANADA

Ste-Madeleine

2676, chemin Plamondon
Ste-Madeleine, QC J0H 1S0
CANADA

McAdam

64, Northlane
McAdam, NB E6J 1K6
CANADA

St-Nicolas

1185, chemin Industriel
St-Nicolas, QC G7A 1B2
CANADA

St-Louis-de-Blandford

130, rue Industriel
St-Louis-de-Blandford, QC G0Z 1B0
CANADA

Embrun

1241, Notre-Dame
Embrun, ON K0A 1W0
CANADA

St-Jean-sur-Richelieu

600, rue Joseph-Oscar-Lévesque
St-Jean-sur-Richelieu, QC J2X 0E8
CANADA

Soleno Textile

1261, rue Berlier
Laval, QC H7L 3Z1
CANADA

Soleno Service

844.653.1488
service@soleno.com
Service 24/7
RBQ : 5668-4319-01

FREIGHT POLICY

FREIGHT CHARGES		
	FROM \$2,000	APPROXIMATE TIME OF DELIVERY
ZONE 1	6%	2 BUSINESS DAYS
ZONE 2	7%	2 BUSINESS DAYS
ZONE 3	8%	2 BUSINESS DAYS
ZONE 4	9%	2 BUSINESS DAYS
ZONE 5	11%	4 BUSINESS DAYS
ZONE 6	13%	5 BUSINESS DAYS
ZONE 7	15%	5 BUSINESS DAYS
ZONE 8	18%	6 BUSINESS DAYS
ZONE 9	20%	6 BUSINESS DAYS
ZONE 10	23%	6 BUSINESS DAYS

THINGS TO REMEMBER REGARDING OUR FREIGHT POLICY :

Delivery is available at these rates for any order with a **minimum value of \$2,000**. A surcharge of **\$100**, in addition to the usual delivery zone rate, will be charged for any order **under \$2,000** that must be **delivered**. For **far areas** including zones 8, 9 and 10, contact our Internal Sales Team to verify the charging freights and the applicable time of delivery.

The applicable freight charge % is always based on the **original amount of the order excluding the sales tax.**

The applicable freight charge % is always determined by the **delivery address** and not the invoice address.

There are no discount allowances for customer pick-ups.

The **fuel surcharge % is already included** in the applicable freight charges.

The freight charge % for delivering back order products is based on the original order amount.

In order to ease the loading and unloading of certain products and to insure the safety of our drivers, Soleno reserves the right, without obtaining your prior consent, to send certain items in **wooden crates**. A **\$75 fee** will be charged per crate, which will be credited in full **if the crates are returned in their original state.**

Freight rates may vary on **orders containing one or more oversized products** requiring a special transportation permit.

PICK-UP POLICY

A FEW TIPS REGARDING CUSTOMER PICK-UPS :

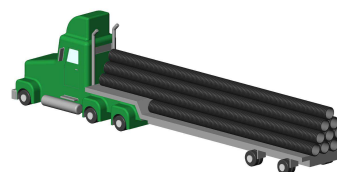
- 1- Hours of service for loading are from 8:00 am to 12:00 pm and from 1:00 pm to 5:00 pm. No loading is authorized between noon and 1:00 pm. This is valid all year round. No loading on weekends.
- 2- Because our products come in a wide variety of dimensions, we cannot guarantee that specific orders will ship complete regardless of their monetary value.
- 3- Soleno reserves the right to refuse loading, when a regulation of the Ministry of transportation is not respected or can compromise the security of its employees or that of the public safety on highways.
- 4- Any damage caused to the goods at the time of pick-up will be the full and entire responsibility of the customer.

A FEW PRACTICAL HINTS :

- 1- Flat bed vehicles must be equipped with posts and straps (tie downs) according to the Ministry of Transportation cargo securement regulations.
- 2- We recommend the use of a semi-trailer (dry box) or a flat bed equipped with 12 posts with a minimum height of 8' for a complete load of drain.
- 3- We recommend the use of a semi-trailer (dry box) or a flat bed equipped with 12 posts, with a height of 8' for a load of pipes that would be 18" in diameter or less and 6 meters in length mixed with drain coils.
- 4- We recommend the use of a flat bed equipped with 16 posts with a minimum height of 8' for a mixed load of pipes containing 4 meter lengths.
- 5- In order to maximize loading, Soleno will nest pipes of different diameters in a flat bed vehicle if it is equipped with a minimum of 2 security nets (one at each end of the load).
- 6- Contact our transport department at 450.347.7855 x 269 or x 383 for more information on the loading of your truck.



**Flat bed equipped
with posts**



**Flat bed
without posts**

RETURN MERCHANDISE POLICY

SOLENO MAY ACCEPT THE RETURN OF PRODUCTS, SUBJECT TO THE FOLLOWING :

- 1 - Prior to returning any products, purchaser must obtain a return material authorization from Soleno.
- 2 - Purchaser must indicate invoice number products being returned refer to.
- 3 - Products must be returned by prepaid freight (see Transportation Service for the Return of Merchandise below for more information). The deadline for accepting returns of all products is valid for a maximum period of one year.
- 4 - Products must be received in good condition.
- 5 - A minimum return fee of 25% of the purchase price will be applied against any credit issued in regards to the returned products, except in the case of a shipping error by Soleno. Soleno may apply additional charges against the credit to cover remarketing costs, or may refuse to issue any credit.
- 6- A minimum return fee of 50% of the purchase price will be applied against any credit issued in regards to certain goods such as obsolete products, excessive quantities and any specialty products that normally cannot be returned such as:
 - All perforated and filtered culverts.
 - All Solflo and Solflomax fabricated fittings.
 - All special products not shown in current price lists.
- 7- The following products are non-returnable :
 - All fabricated catch basins and their components
 - All custom-made products, and those specially manufactured in order to meet specific project requirements.

Important note : In order to find out the applicable return fee for specific products, please consult the "Return Fee" column of the associated invoice.

TRANSPORTATION SERVICE FOR THE RETURN OF MERCHANDISE

SOLENO OFFERS TRANSPORTATION FOR THE RETURN OF MERCHANDISE UPON THE FOLLOWING CONDITIONS :

- 1- A fixed rate for pick-up and loading with our carrier is 75\$, and is applicable on any return, plus the % corresponding to your delivery zone, whatever the monetary value of the merchandise returned.
- 2- The merchandise will be picked up at Soleno's convenience.

GENERAL SALES TERMS AND CONDITIONS

Orders

Purchaser's orders are conditional upon satisfactory credit approval by Soleno.

Special Orders

Once confirmed by Soleno, orders for custom-made products manufactured to Purchasers specifications, and orders for non-inventoried products cannot be cancelled or modified, except with Soleno's written consent and upon terms which provide Soleno with compensation for the costs and expenses incurred.

These products are:

- All perforated and/or filtered culverts;
- All Solflo and Solflomax fabricated fittings;
- All fabricated catch basins and their components;
- Any product that has been altered from its original state (E.g. Monolithic connectors, bevelled pipes, etc.);
- All special products not shown in current price lists.

Soleno reserves the right to ask for written orders and down payments before proceeding to the fabrication of such products. Each and every order could be partially or entirely released at Soleno's discretion. Invoices will be sent out following each shipment.

Prices

Prices are published for information purposes only and may be subject to change without notice, at Soleno's sole discretion. Any price variation, notably due to an increase in the cost of raw materials or any other circumstance beyond Soleno's control, will be confirmed with the buyer prior to the sale. Final prices are confirmed upon acceptance of orders by Soleno with the issuance of an Order Confirmation. In case of contradiction between the published prices and the prices confirmed in the Order Confirmation, the prices indicated in the Order Confirmation shall prevail.

Published prices do not include applicable taxes, including but not limited to sales, use, excise or any other taxes or levies imposed under any law, regulation or ordinance currently or in the future affecting the Products. All applicable taxes will be levied unless Buyer provides Soleno with tax exemption certificates or other documents required by the competent tax authorities prior to the issuance of the Order Confirmation by Soleno. Soleno reserves the right to request any additional documents or information in order to proceed with such tax exemption. Soleno reserves the right to levy the applicable taxes if the information provided by the buyer is insufficient or incomplete.

Shipment and lead time

Delivery schedules stipulated in either the quotation of the order confirmation are approximate only. Shipments will be made within reasonable proximity thereto. Under no circumstances will Soleno be responsible for any damage whatsoever caused by delays in shipment, whether resulting from causes within or beyond the control of Soleno.

Purchasers must verify quantities and report in writing to Soleno any discrepancies within one (1) business day of receipt.

Payment

Unless other terms of payment are agreed to in writing by Soleno, payment is due the 30th day the month following the date of the invoice.

GENERAL SALES TERMS AND CONDITIONS (CONT.)

Title to goods sold

Purchasers acknowledge and agree that as long as the products are in their possession, title of products shall remain with Soleno until full payment is received by Soleno. Purchasers agree to defend, compensate and hold Soleno free of all costs, expenses and damages arising out of any claims asserted against Soleno, following the exercise of its ownership rights or any recourse in payment of purchase price.

Warranty

All Soleno's products are guaranteed against manufacturing defects for one (1) year after shipment. Soleno will replace, free of charge, any products which are found to be defective.

Soleno will not be held responsible for and/or allow claims for labor, materials and/or other expenses required to replace the defective product, or to repair any damage resulting from the use thereof. Soleno disclaims any responsibility for Purchasers calculations, product drawings or engineering design specifications. Soleno's liability is limited to the purchase price applicable to the product.

Limitation of liability

Soleno reserves the right to make changes or improvements to its products without assuming any further obligation. Soleno disclaims any responsibility regarding the accuracy of any plans, drawings or specifications furnished to Purchasers as part of the sale of any of its products. Soleno products shall be used or tested in applications or under conditions that are in accordance with technical information or literature available from Soleno.

It is agreed and understood that Soleno's liability is strictly limited to the replacement of products as hereinbefore specified, and that Soleno shall not, in any event, be liable for any damages whether for the loss of use, business interruption, or any other claim for incidental, consequential, special or punitive damages. There is no warranty, condition or representation of any nature whatsoever, expressed or implied, by statute or otherwise, except as herein contained, and Soleno disclaims any implied warranties of market value and/or applicability of its products for a special purpose.

Important notice

All precautions have been taken to certify the information. No liability will be accepted for any errors and or omissions. Due to constant improvements our specifications are subject to change without notice. This price list supersedes all previous documentation.

DRAIN

Length	Description	Type	Micron	Qty T/B*	Code	Price / Meter
75 mm (3 in)						
30.48 m	Non-perforated	1		NA	100308	4,75\$
30.48 m	Perforated	2		NA	100304	4,75\$
30.48 m	NW polyester white	2	450	NA	100313	6,02\$
100 mm (4 in)						
75 m	Non-perforated	1		68/4	100473	3,40\$
75 m	Perforated	2		68/4	100460	3,40\$
75 m	NW polypropylene green	Mega 3	250	68/4	100461	4,42\$
75 m	Woven polyester black	Mega 3	450	68/4	100463	4,42\$
75 m	Woven polyester black	2	450	68/4	100468	4,42\$
75 m	Non-perf. red with string	1		NA	100423RED	4,58\$
45 m	Non-perforated	1		110/5	100455	3,40\$
45 m	Perforated	2		110/5	100442	3,40\$
45 m	Perforated	Mega 3		110/5	100444	3,40\$
45 m	NW polypropylene green	Mega 3	250	110/5	100447	4,42\$
45 m	Woven polyester black	Mega 3	450	110/5	100445	4,42\$
30 m	Non-perforated	1		135/5	100420	3,40\$
30 m	Perforated	2		135/5	100406	3,40\$
30 m	NW polypropylene green	Mega 3	250	135/5	100417	4,42\$
30 m	Woven polyester black	Mega 3	450	135/5	100430 <	4,42\$
30 m	Woven polyester black	2	450	135/5	100413	4,42\$
30 m	Non-perf. red with string	1		NA	100422RED	4,58\$
15 m	Non-perforated	1		NA/5	100400	3,79\$
15 m	Perforated	2		NA/5	100401	3,79\$
15 m	NW polypropylene green	Mega 3	250	NA/5	100416	4,90\$
15 m	Woven polyester black	Mega 3	450	NA/5	100415 <	4,90\$
3 m	Non-perforated	1		NA/10	100404	3,79\$
3 m	Perforated	2		NA/10	100403	3,79\$
3 m	NW polypropylene green	Mega 3	250	NA/10	100408	4,90\$
150 mm (6 in)						
30 m	Non-perforated	1		68/4	100664	9,67\$
30 m	Perforated	2		68/4	100642	9,67\$
30 m	NW polypropylene green	Mega 3	250	68/4	100656	12,56\$
30 m	Woven polyester black	2	450	68/4	100654	12,56\$
200 mm (8 in)						
6 m	Non-perforated	1		NA	100828	20,42\$
6 m	Perforated	2		NA	100806	20,42\$
6 m	NW polypropylene green	2	250	NA	100813	25,02\$
30 m	Non-perforated	1		NA	100830	20,42\$
30 m	Perforated	2		NA	100831	20,42\$
30 m	NW polyester black	2	100	NA	100832	25,02\$
30 m	NW polypropylene green	2	250	NA	100833	25,02\$

* Qty T/B : Estimated quantity per full truck load/bundle.

NW : non-woven.

DRAIN

Length	Description	Type	Micron	Qty T/B*	Code	Price / Meter
250 mm (10 in)						
6 m	Non-perforated	1		NA	101030	27,97\$
6 m	Perforated	2		NA	101006	27,97\$
6 m	NW polypropylene green	2	250	NA	101015	32,50\$

* Qty T/B : Estimated quantity per full truck load/bundle.
NW : non-woven.

In order to guarantee the performance of our filter sheath around the drain on all our small roll sizes, it is the customer's responsibility to ensure an efficient inventory turnover (stock rotation). A rotation three (3) months after the date of receipt is required.

SOLIFLEX

Length	Description	Type	Micron	Qty T/B*	Code	Price / Meter
100 mm (4 in)						
45 m	Non-perforated	1		NA/4	120455	4,92\$
45 m	Perforated	Type 3		NA/4	120444	4,92\$
45 m	NW polypropylene green	Type 3	250	NA/4	120447	6,40\$

BNQ 3624-115 (Type 1 - Type 3) certified.

Conforms to the National building code of Canada.

See our brochure at www.soleno.com/en/resource-center/.

Fits perfectly with Soleno's standard range of drainage accessories with external connections.

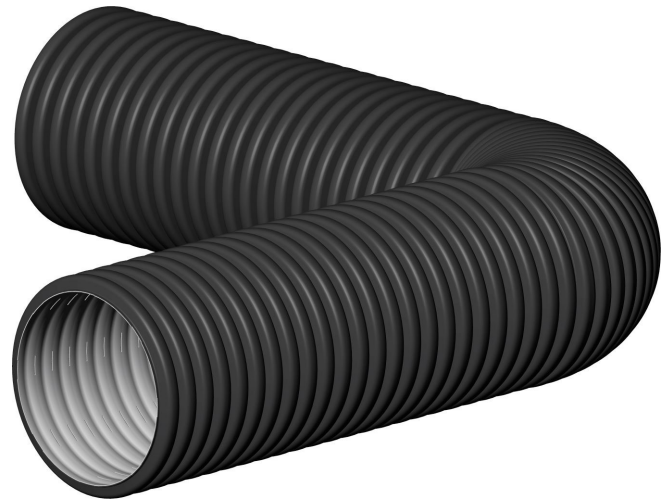
Its flexibility allows 90° turns with a tight radius of curvature.



* Qty T/B : Estimated quantity per full truck load/bundle.
NW : non-woven.

SMOOTH INTERIOR FLEXIBLE CORRUGATED DRAIN

Length	Description	Qty T/B*	Code	Price / Meter
200 mm (8 in)				
207,26 m	Non-perforated	6/NA	FLEXCORR08680	34,12\$
207,26 m	Perforated	6/NA	FLEXCORR08680	34,12\$
250 mm (10 in)				
173,74 m	Non-perforated	6/NA	FLEXCORR10570	44,35\$
173,74 m	Perforated	6/NA	FLEXCORR10570	44,35\$
300 mm (12 in)				
105,16 m	Non-perforated	6/NA	FLEXCORR12345	62,63\$
105,16 m	Perforated	6/NA	FLEXCORR12345	62,63\$
375 mm (15 in)				
60,96 m	Non-perforated	6/NA	FLEXCORR15200	93,22\$
60,96 m	Perforated	6/NA	FLEXCORR15200	93,22\$



* Qty T/B : Estimated quantity per full truck load/bundle.
NW : non-woven.

Split Coupler

Diameter	Qty B/C*	Code	Unit Price
200 mm (8 in)	NA	2M200FC	14,06\$

DRAIN ACCESSORIES

Internal Coupler



Diameter	Qty B/C*	Code	Unit Price
100 mm (4 in)	10/650	1M0040	4,42\$
150 mm (6 in)	5/135	1M0060N	8,09\$
200 mm (8 in)	10/NA	1M0080	14,87\$

Model shown

1M0040

Double Bell Snap

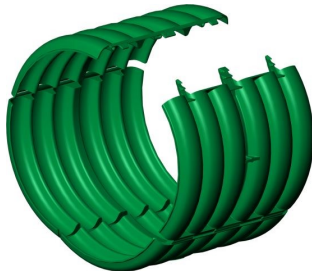


Diameter	Qty B/C*	Code	Unit Price
100 mm (4 in)	10/480	3MCC004C	7,35\$
150 mm (6 in)	5/150	3MCC006C	15,81\$
200 mm (8 in)	NA/180	3MCC008C	22,21\$
250 mm (10 in)	NA/88	3MCC010C	38,18\$

Model shown

3MCC004C

Split Coupler



Diameter	Qty B/C*	Code	Unit Price
75 mm (3 in)	NA	1M0031	5,02\$
100 mm (4 in)	20/3000	2M100F	4,38\$
150 mm (6 in)	5/640	1M0061	10,33\$
200 mm (8 in)	5/315	1M0081	14,06\$
250 mm (10 in)	30/NA	1M1010	29,87\$

Model shown

2M100F

Internal End Cap



Diameter	Qty B/C*	Code	Unit Price
75 mm (3 in)	NA	1B0035	4,81\$
100 mm (4 in)	8/1400	1B0045	4,93\$
150 mm (6 in)	10/360	1B0065	8,36\$

Model shown

1B0045

* Qty B/C : Quantity per bag/crate.

DRAIN ACCESSORIES

External End Cap



Diameter	Qty B/C*	Code	Unit Price
100 mm (4 in)	10/800	2B100CV	8,90\$

90-Degree Elbow



Diameter	Qty B/C*	Code	Unit Price
100 mm (4 in)	6/144	1C0049	11,03\$

External Reducer



Diameter	Qty B/C*	Code	Unit Price
100 mm x 75 mm (4 in x 3 in)	10/300	1R0043	10,13\$
150 mm x 100 mm (6 in x 4 in)	NA/1	1R0064	11,17\$
200 mm x 150 mm (8 in x 6 in)	NA/1	1R0086	17,67\$
250 mm x 200 mm (10 in x 8 in)	NA/1	1R1008	32,32\$

Model shown
1R0064

Tee



Diameter	Qty B/C*	Code	Unit Price
75 mm (3 in)	NA	1T0033	18,54\$
250 mm (10 in)**	3/NA	1T1010	90,34\$
300 mm (12 in)***	3/NA	1T1212	150,70\$

**The riser can reduce from 250mm (10") to 200mm (8") to 150mm (6") to 100mm(4").

***The riser can reduce from 300mm (12") to 250mm (10") to 200mm (8").

Model shown
1T1212

* Qty B/C : Quantity per bag/crate.

DRAIN ACCESSORIES

Reducing Tee

Diameter	Qty B/C*	Code	Unit Price
100 mm x 100 mm x 75 mm (4 in x 4 in x 3 in)	10/100	1T0043	8,90\$
150 mm x 150 mm x 100 mm (6 in x 6 in x 4 in)	NA/50	1T0064	23,15\$
200 mm x 150 mm x 100 mm (8 in x 6 in x 4 in)	5/20	1T8864	42,70\$



Model shown
1T0064

Tee-Wye (Y)

Diameter	Qty B/C*	Code	Unit Price
100 mm (4 in)	10/180	1TY044	9,81\$
150 mm (6 in)	NA/40	1TY066	21,99\$



Model shown
1TY044

Internal Tee

Diameter	Qty B/C*	Code	Unit Price
100 mm (4 in)	10/NA	1T044IN <	9,96\$



Is sold only in packs of 10.

* Qty B/C : Quantity per bag/crate.

DRAIN ACCESSORIES

Wye (Y) And Wye (Y) Reducer



Diameter	Qty B/C*	Code	Unit Price
100 mm (4 in)	8/80	1DY004	14,92\$
150 mm (6 in)	5/NA	1DY006**	42,09\$

**The riser can reduce from 150 mm (6") to 125 mm (5") to 100mm (4").

Model shown

1DY004

Down Spout Adapter



Diameter	Qty B/C*	Code	Unit Price
100 mm (4 in)	10/780	1G004	8,75\$
100 mm (4 in)	10/780	1G004N	8,75\$
100 mm (4 in)	10/760	1G0334N	8,75\$

1G004: 2"x3" white down spout adaptor
1G004N: 2"x3" black down spout adaptor
1G0334N: 3"x3" black down spout adaptor

Model shown

1G004

Drain Pipe Universal Adapter



Diameter	Qty B/C*	Code	Unit Price
100 mm (4 in)	10/560	1ADRCU04	6,25\$

Adapts to several types of solid pipe including ABS and terracotta.

HDPE Adapter For PVC



Diameter	Qty B/C*	Code	Unit Price
100 mm (4 in)	4/340	1ADRC04	15,99\$

* Qty B/C : Quantity per bag/crate.

DRAIN ACCESSORIES

Extensible Tape (White)

Dimension(s)	Qty B/C*	Code	Unit Price
52 mm x 32.92 m (2 in x 108 ft)	NA/48	1ZRUBAW	17,81\$



Extensible Tape (Black)

Dimension(s)	Qty B/C*	Code	Unit Price
52 mm x 32.92 m (2 in x 108 ft)	NA/48	1ZRUBAS	17,81\$
101.6 mm x 30.48 m (4 in x 100 ft)	NA	1ZRUBAS4	36,63\$



Model shown

1ZRUBAS

Grate With Small Holes

Diameter	Qty B/C*	Code	Unit Price
100 mm (4 in)	10/850	1TTG04C	10,22\$
150 mm (6 in)	5/325	1TTG06C	14,99\$

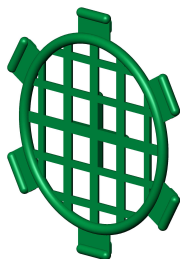


Model shown

1TTG04C

Plastic Grate Disc

Diameter	Qty B/C*	Code	Unit Price
100 mm (4 in)	10/150	1TTG04D	2,25\$



* Qty B/C : Quantity per bag/crate.

DRAIN ACCESSORIES

Stainless Steel Reinforced Plastic Grate



Diameter	Qty B/C*	Code	Unit Price
100 mm (4 in)	10/850	1TTG04AG	22,99\$
150 mm (6 in)	NA/220	1TTG06AG	31,72\$
200 mm (8 in)	NA/200	1TTG08AG	55,44\$

Model shown

1TTG04AG

Stainless Steel Fork Grate



Diameter	Qty/Crate	Code	Unit Price
100 mm (4 in)	1	1TTG04AF	46,32\$
150 mm (6 in)	1	1TTG06AF	54,50\$
200 mm (8 in)	1	1TTG08AF	92,50\$
250 mm (10 in)	1	1TTG10AF	112,50\$
300 mm (12 in)	1	1TTG12AF	122,11\$
375 mm (15 in)	1	1TTG15AF <	133,29\$

Model shown

1TTG04AF

Stainless Steel Inside Grate



Diameter	Qty/Crate	Code	Unit Price
200 mm (8 in)	1	1TTG08AI	80,56\$
250 mm (10 in)	1	1TTG10AI	85,88\$
300 mm (12 in)	1	1TTG12AI	88,67\$
375 mm (15 in)	1	1TTG15AI	97,01\$
450 mm (18 in)	1	1TTG18AI	99,79\$
525 mm (21 in)	1	1TTG21AI <	167,00\$
600 mm (24 in)	1	1TTG24AI <	169,89\$
750 mm (30 in)	1	1TTG30AI <	214,27\$
900 mm (36 in)	1	1TTG36AI <	226,94\$
1050 mm (42 in)	1	1TTG42AI <	233,50\$
1200 mm (48 in)	1	1TTG48AI <	269,38\$
1500 mm (60 in)	1	1TTG60AI <	270,06\$

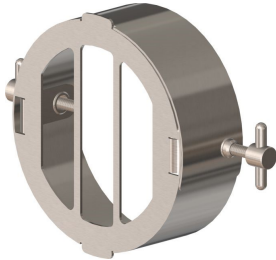
Model shown

1TTG12AI

* Qty B/C : Quantity per bag/crate.

DRAIN ACCESSORIES

Aluminium Grate



Model shown
1TTG04ALU

Diameter	Qty/Crate	Code	Unit Price
100 mm (4 in)	1	1TTG04ALU	53,34\$
150 mm (6 in)	1	1TTG06ALU	60,39\$
200 mm (8 in)	1	1TTG08ALU	90,90\$
250 mm (10 in)	1	1TTG10ALU	108,81\$

Small Hole Vertical Drain (Hickenbottom)



Model shown

1VAP04

Perforation of 1/4".

Diameter	Qty/Crate	Code	Unit Price
125 mm (5 in)	1	1VAP04	96,15\$
150 mm (6 in)	1	1VAP06	111,08\$
200 mm (8 in)	1	1VAP08	167,19\$
250 mm (10 in)	1	1VAP10	249,71\$

Large Hole Vertical Drain (Hickenbottom)



Model shown

1VAG04

Perforation of 1".

Diameter	Qty/Crate	Code	Unit Price
125 mm (5 in)	1	1VAG04	96,15\$
150 mm (6 in)	1	1VAG06	111,08\$
200 mm (8 in)	1	1VAG08	167,19\$
250 mm (10 in)	1	1VAG10	249,71\$

DRAIN ACCESSORIES

Vertical Drain Tee



Diameter	Qty/Crate	Code	Unit Price
125 mm (5 in)	1	1VAT04*	96,15\$
150 mm (6 in)	1	1VAT06	111,08\$
200 mm (8 in)	1	1VAT08	167,19\$
250 mm (10 in)	1	1VAT10	249,71\$

Model shown
1VAT04

The 125 mm (5 in) vertical drain tee requires two 125 x 100 mm (5 x 4 in) vertical drain reducer.

Vertical Drain Reducer



Diameter	Qty/Crate	Code	Unit Price
125 mm x 100 mm (5 in x 4 in)	1	1VAR06	50,48\$

Tap Tee



Model shown
33SL04



Model shown
33SL04LONG

Diameter	Qty N/C*	Code	Unit Price
100 mm (4 in)	10/560	33SL04**	7,99\$
100 mm (4 in)	10/560	33SL04LONG***	8,99\$

NEW TAP TEES!

Our new injected tap tees 100 mm (4") are now available!

** Allows the connection of the 100 mm (4") drain to the 150 mm (6") to 250 mm (10") collectors.

*** Allows the connection of the 100 mm (4") drain to the 250 mm (10") to 375 mm (15") collectors.

* Qty N/C : Quantity per net/crate.

DRAIN ACCESSORIES

Drainage Flag



Model shown
860410

Color	Qty B/C*	Code	Unit Price
Orange	100/1000	860410	0,55\$
Blue	100/1000	860411	0,55\$
Lime Green	100/1000	860413	0,55\$
Pink	100/1000	860412	0,55\$
White	100/1000	860415	0,55\$

* Qty B/C : Quantity per bag/crate.

All offered in 30 in (standard). Orange flags (code 860416) and lime green flags (code 860417) also offered in 36 in.

Drainage Outlet Sign



Qty/Crate	Code	Unit Price
1	1PDRABI	29,26\$

9 inches per 10.25 inches format. UV resistant.

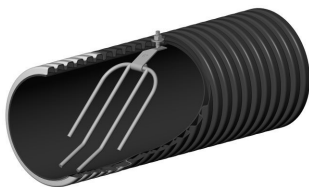
Galvanized Steel Post



Qty/Crate	Code	Unit Price
1	PUMINI8	48,98\$

8-foot (2 438 mm) U-shaped post for drainage outlet sign with 3/8 inche (9.53 mm) holes.

Drainage Outlet With Fork Grate



Diameter	Qty C/P*	Code	Unit Price
100 mm (4 in)	1/60	SD04GF	118,00\$
150 mm (6 in)	1/28	SD06GF	165,00\$
200 mm (8 in)	1/23	SD08GF	212,00\$
250 mm (10 in)	1/11	SD10GF	294,00\$

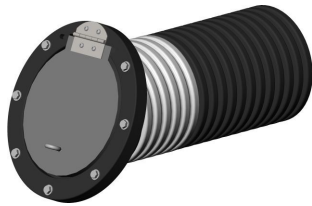
Model shown
SD06GF

All offered in lenght of 3 m. Includes a fork grate and a double bell coupling.

* Qty C/P : Quantity per crate/pack.

DRAIN ACCESSORIES

Non-Return Valve Outlet

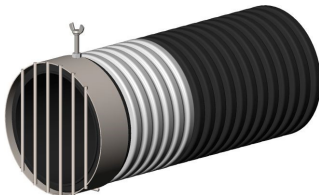


Diameter	Qty C/P*	Code	Unit Price
100 mm (4 in)	1/NA	SD04CA	301,10\$
150 mm (6 in)	1/NA	SD06CA	393,50\$
200 mm (8 in)	1/NA	SD08CA	500,31\$
250 mm (10 in)	1/NA	SD10CA	663,14\$

Model shown
SD06CA

All offered in length of 3 m. Includes a non-return valve and a double bell coupling.

Drainage Outlet With External Round Grid

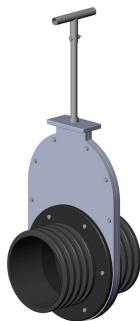


Diameter	Qty C/P*	Code	Unit Price
100 mm (4 in)	1/60	SD04GR	120,00\$
150 mm (6 in)	1/28	SD06GR	167,00\$
200 mm (8 in)	1/23	SD08GR	214,00\$
250 mm (10 in)	1/11	SD10GR	296,00\$

Model shown
SD06GR

All offered in length of 3 m. Includes a exterior circular grate and a double bell coupling.

Slide Valve



Diameter	Qty/Crate	Code	Unit Price
100 mm (4 in)	1	E0210	1440,48\$
150 mm (6 in)	1	E0220	1585,71\$
200 mm (8 in)	1	E0230	1728,57\$

Model shown
E0230

Slide valve 250 mm (10 in) to 600 mm (24 in) also available on request. For a typical installation, contact your sales representative.

Water Control Structure



Diameter	Qty/Crate	Code	Unit Price
150 mm (6 in)	1	W1420	2492,86\$
200 mm (8 in)	1	W1430	2880,95\$
250 mm (10 in)	1	W1440	3683,33\$
300 mm (12 in)	1	W1450	4045,24\$
450 mm (18 in)	1	W1670	9369,05\$

Model shown
W1440

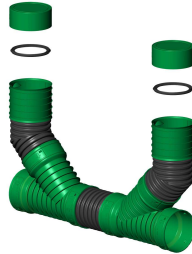
For a typical installation, contact your sales representative.

* Qty C/P : Quantity per crate/pack.

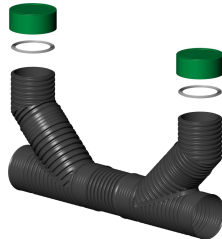
DRAIN ACCESSORIES

Drainage Access Chimney

Description	Diameter	Qty B/C*	Code	Unit Price
Drainage chimney	100 mm (4 in)	NA/30	830004	65,23\$
End cap	100 mm (4 in)	10/NA	2B100CG**	11,14\$
Drainage chimney	150 mm (6 in)	1	830006	126,24\$
End cap	150 mm (6 in)	1	2B150CG**	18,94\$



Model shown
830004



Model shown
830006

* Qty B/C : Quantity per bag/crate.

** Two end caps - sold separately - required per chimney (gaskets included).

See our brochure on [iron ocher](http://www.soleno.com/en/resource-center/) at www.soleno.com/en/resource-center/.

FLOOR DRAIN AND SUMPWELL CATCH BASIN

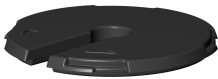
Sump Well

Dimension(s)	Qty/Crate	Code	Unit Price
500 mm x 600 mm (20 in x 24 in)	1	1UCU025	67,50\$



Sump Well Cover

Dimension(s)	Qty/Crate	Code	Unit Price
500 mm (20 in)	1	1UCV025	37,36\$



Radon Sump Basin

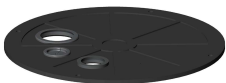
Dimension(s)	Qty/Crate	Code	Unit Price
450 mm x 550 mm (18 in x 22 in)	1	1UCURADON1822	93,38\$



See our radon gas mitigation and capture solution brochure at www.soleno.com/en/resource-center/.

Radon Sump Basin Cover

Dimension(s)	Qty/Crate	Code	Unit Price
450 mm (18 in)	1	1UCVRADON18	76,33\$



FLOOR DRAIN AND SUMPWELL CATCH BASIN

Fibro-Drain Floor Drain

Dimension(s)	Description	Code	Unit Price
300 mm x 300 mm (12 in x 12 in)	Complete drain (2 pcs)	1ZD1212	67,94\$
300 mm x 300 mm (12 in x 12 in)	Floor drain without cover	1ZD1212B	57,97\$
300 mm x 300 mm (12 in x 12 in)	Floor drain cover 1ZD1212B	1ZD1212C	40,80\$
355 mm x 405 mm (14 in x 16 in)	Drain (cover not included)	1ZD1416P	60,75\$
400 mm x 450 mm (16 in x 18 in)	Plastic cover for 1ZD1416P	1ZD1618C	53,36\$
450 mm x 600 mm (18 in x 24 in)	Drain (cover not included)	1ZD1824P	86,47\$
485 mm x 635 mm (19 in x 25 in)	Plastic cover for 1ZD1824P	1ZD1925C	70,16\$
485 mm x 635 mm (19 in x 25 in)	Steel cover for 1ZD1824P	1ZD1925CA	110,09\$



Model shown

1ZD1212

Fibro-Drain Radon Floor Drain

Dimension(s)	Description	Code	Unit Price
495 mm x 641 mm (20 in x 25 in)	Cover for 1ZD2425P	1ZD1925E	137,89\$
552 mm x 705 mm (22 in x 28 in)	Drain (cover not included)	1ZD2425P	151,69\$

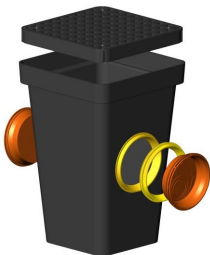


Model shown

1ZD2425P & 1ZD1925E

Tuf-Tite Floor Drain

Dimension(s)	Description	Code	Unit Price
279 mm x 381 mm (11 in x 15 in)	Complete drain (5 pcs)	1ZD115	91,72\$
279 mm x 381 mm (11 in x 15 in)	Floor drain without cover	1ZD115NG	62,99\$
279 mm x 381 mm (11 in x 15 in)	Cover for 1ZD115	1ZD115C	48,90\$
100 mm (4 in)	Drain and DR-35 seal (yellow)	1ZDANJ	13,06\$
100 mm (4 in)	Plug (orange)	1ZDBOUC	13,06\$



Model shown

1ZD115



SOLFLO (CORRUGATED INTERIOR AND EXTERIOR)

Length	Description	Qty*	kPa	Code	Price / Meter
100 mm (4 in)					
30 m	Non perforated	5	R300	230442	9,86\$
30 m	Perforated	5	R300	230430	9,86\$
30 m	Perforated & filtered (Routex IV)	5	R300	230433	13,21\$
150 mm (6 in)					
30 m	Non perforated	4	R300	230644	16,70\$
30 m	Perforated	4	R300	230640	16,70\$
30 m	Perforated & filtered (Routex IV)	4	R300	230643	23,52\$
200 mm (8 in)					
30 m	Non perforated	1	R300	230842	26,85\$
30 m	Perforated	1	R300	230830	26,85\$
30 m	Perforated & filtered (Routex IV)	1	R300	230833	33,25\$
300 mm (12 in)					
6 m	Non perforated	1	R210	201224 <	39,31\$
6 m	Perforated	1	R210	201220 <	45,37\$
6 m	Perforated & filtered (Routex IV)	1	R210	201223 <	54,46\$

A string to facilitate the passage of ovalization template can be inserted into the pipe. Additional charges will apply.

Contact our internal sales team for pricing and lead time on non-listed items.


Qty* : Quantity per bundle.



SOLFLO MAX (SMOOTH INTERIOR AND CORRUGATED EXTERIOR) - R210

Length	Description	kPa	Code	Price / Meter	
				Plain end	C
300 mm (12 in)					
6 m	Non perforated	R210	211224	43,41\$	45,68\$
9 m	Non perforated	R210	211264	43,41\$	
10 m	Non perforated	R210	211284	43,41\$	
12 m	Non perforated	R210	211296	43,41\$	
6 m	Perforated	R210	211220 <	51,91\$	56,69\$
6 m	Perforated & filtered (Routex IV)	R210	211223 <	72,80\$	78,55\$
375 mm (15 in)					
6 m	Non perforated	R210	211524	73,30\$	76,52\$
9 m	Non perforated	R210	211564	73,30\$	
12 m	Non perforated	R210	211596 <	73,30\$	
6 m	Perforated	R210	211520 <	81,45\$	86,94\$
6 m	Perforated & filtered (Routex IV)	R210	211523 <	98,90\$	107,50\$
450 mm (18 in)					
6 m	Non perforated	R210	211824	92,48\$	102,05\$
9 m	Non perforated	R210	211864	92,48\$	
10 m	Non perforated	R210	211884	92,48\$	
12 m	Non perforated	R210	211896	92,48\$	
6 m	Perforated	R210	211820 <	109,90\$	114,83\$
6 m	Perforated & filtered (Routex IV)	R210	211823 <	133,62\$	144,38\$
525 mm (21 in)					
6 m	Non perforated	R210	212124	134,01\$	146,79\$
9 m	Non perforated	R210	212164	134,01\$	
12 m	Non perforated	R210	212196 <	134,01\$	
6 m	Perforated	R210	212120 <	144,54\$	160,61\$
6 m	Perforated & filtered (Routex IV)	R210	212123 <	176,28\$	189,06\$
600 mm (24 in)					
6 m	Non perforated	R210	212424	147,45\$	179,04\$
9 m	Non perforated	R210	212464	147,45\$	
10 m	Non perforated	R210	212484 <	147,45\$	
6 m	Perforated	R210	212420 <	180,84\$	203,44\$
6 m	Perforated & filtered (Routex IV)	R210	212423 <	223,23\$	254,30\$
750 mm (30 in)					
6 m	Non perforated	R210	213024	238,41\$	268,15\$
9 m	Non perforated	R210	213064	238,41\$	
6 m	Perforated	R210	213020 <	279,24\$	298,34\$
6 m	Perforated & filtered (Routex IV)	R210	213023 <	344,71\$	372,93\$
900 mm (36 in)					
6 m	Non perforated	R210	213624	378,85\$	422,44\$
9 m	Non perforated	R210	213664	378,85\$	
12 m	Non perforated	R210	213696 <	378,85\$	
6 m	Perforated	R210	213620 <	433,57\$	480,05\$
6 m	Perforated & filtered (Routex IV)	R210	213623 <	533,95\$	600,06\$

< : indicates return fee of 50% or more.

 : Product for green infrastructure.

Legend :

Plain end : No coupling

C : Soil tight (snap bell)

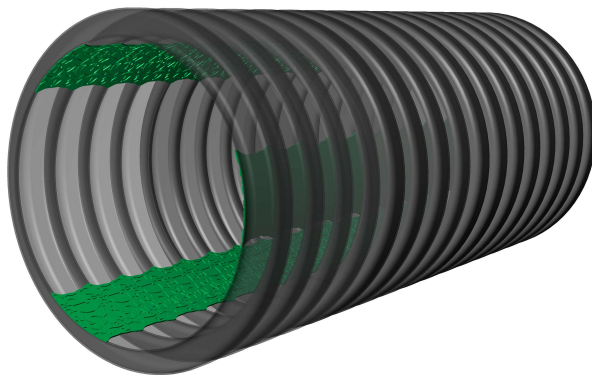
Identification :

For identification purposes, Solflo Max R210 pipes include an **orange line**.

Contact our internal sales team for pricing and lead time on non-listed items.

TURBULENCE

Length	Description	kPa	Code	Price / Meter
450 mm (18 in)				
6 m	Non perforated	R210	251824 <	97,37\$
9 m	Non perforated	R210	251864 <	97,37\$
600 mm (24 in)				
6 m	Non perforated	R210	252424 <	167,55\$
9 m	Non perforated	R210	252464 <	167,55\$
750 mm (30 in)				
6 m	Non perforated	R210	253024 <	223,65\$
9 m	Non perforated	R210	253064 <	223,65\$



See our brochure at www.soleno.com/en/resource-center/

Our Turbulence line of products is available out of Ste-Madeleine, Quebec only.



SOLFLO MAX (SMOOTH INTERIOR AND CORRUGATED EXTERIOR) - R320

Length	Description	kPa	Qty*	Code	Price / Meter	
					C	CGI
100 mm (4 in)						
4 m	Non perforated	R320	60	320404		16,70\$
6 m	Non perforated	R320	60	320420	16,27\$	16,70\$
6 m	Perforated	R320	60	320415	18,85\$	
6 m	Perforated & filtered (Routex IV)	R320	60	320417	26,01\$	
150 mm (6 in)						
4 m	Non perforated	R320	28	320604		29,00\$
6 m	Non perforated	R320	28	320620	27,75\$	29,00\$
6 m	Perforated	R320	28	320615	31,90\$	
6 m	Perforated & filtered (Routex IV)	R320	28	320617	39,46\$	
200 mm (8 in)						
4 m	Non perforated	R320	23	320804		47,27\$
6 m	Non perforated	R320	23	320820	43,48\$	47,27\$
6 m	Perforated	R320	23	320815	50,63\$	
6 m	Perforated & filtered (Routex IV)	R320	23	320817	59,62\$	
250 mm (10 in)						
4 m	Non perforated	R320	11	321004		67,24\$
6 m	Non perforated	R320	11	321020	52,34\$	67,24\$
6 m	Perforated	R320	11	321015	62,59\$	
6 m	Perforated & filtered (Routex IV)	R320	11	321017	71,17\$	

Legend :

C : Soil tight (snap bell)

CGI : Water tight

Qty* : Quantity per bundle.

Identification :

For identification purposes, Solflo Max R320 pipes include a blue line.

Contact our internal sales team for pricing and lead time on non-listed items.



SOLFLO MAX (SMOOTH INTERIOR AND CORRUGATED EXTERIOR) - R320

Length	Description	kPa	Code	Price / Meter		
				Plain end	C	CGI
300 mm (12 in)						
4 m	Non perforated	R320	321204			78,99\$
6 m	Non perforated	R320	321220	61,54\$	67,29\$	78,99\$
9 m	Non perforated	R320	321260	61,54\$		
6 m	Perforated	R320	321215		81,65\$	
6 m	Perforated & filtered (Routex IV)	R320	321217		95,57\$	
375 mm (15 in)						
4 m	Non perforated	R320	321504			116,19\$
6 m	Non perforated	R320	321520	99,73\$	106,03\$	116,19\$
9 m	Non perforated	R320	321560	99,73\$		
6 m	Perforated	R320	321515		140,42\$	
6 m	Perforated & filtered (Routex IV)	R320	321517 <		148,63\$	
450 mm (18 in)						
4 m	Non perforated	R320	321804			148,58\$
6 m	Non perforated	R320	321820	135,97\$	146,84\$	148,58\$
9 m	Non perforated	R320	321860	135,97\$		
6 m	Perforated	R320	321815 <		170,43\$	
6 m	Perforated & filtered (Routex IV)	R320	321817 <		189,68\$	
525 mm (21 in)						
4 m	Non perforated	R320	322104			206,98\$
6 m	Non perforated	R320	322120	169,15\$	189,98\$	206,98\$
9 m	Non perforated	R320	322160	169,15\$		
6 m	Perforated	R320	322115 <	178,04\$	232,47\$	
6 m	Perforated & filtered (Routex IV)	R320	322117 <	219,80\$	253,01\$	
600 mm (24 in)						
4 m	Non perforated	R320	322404			285,93\$
6 m	Non perforated	R320	322420	227,30\$	250,46\$	285,93\$
9 m	Non perforated	R320	322460	227,30\$		
6 m	Perforated	R320	322415 <	235,18\$	304,43\$	
6 m	Perforated & filtered (Routex IV)	R320	322417 <	290,36\$	328,60\$	
750 mm (30 in)						
4 m	Non perforated	R320	323004			414,38\$
6 m	Non perforated	R320	323020	329,13\$	359,01\$	414,38\$
9 m	Non perforated	R320	323060	329,13\$		
6 m	Perforated	R320	323015 <	345,50\$	464,09\$	
6 m	Perforated & filtered (Routex IV)	R320	323017 <	394,17\$	492,70\$	
900 mm (36 in)						
4 m	Non perforated	R320	323604			600,07\$
6 m	Non perforated	R320	323620	508,18\$	548,32\$	600,07\$
9 m	Non perforated	R320	323660	508,18\$		
6 m	Perforated	R320	323615 <	524,18\$	699,04\$	
6 m	Perforated & filtered (Routex IV)	R320	323617 <	621,71\$	730,61\$	

Legend :

Plain end : No coupling

C : Soil tight (snap bell)

CGI : Water tight

Identification :

For identification purposes, Solflo Max R320 pipes include a blue line.

Contact our internal sales team for pricing and lead time on non-listed items.



SOLFLO MAX (SMOOTH INTERIOR AND CORRUGATED EXTERIOR)

Length	Description	kPa	Code	Price / Meter		
				Plain end	C	CG/CGI*
1050 mm (42 in)						
3.30 m	Non perforated	R140	324225			642,89\$
3.30 m	Perforated	R140	324235 <			833,66\$
3.30 m	Perforated & filtered (Routex IV)	R140	324237 <			917,01\$
1200 mm (48 in)						
4 m	Non perforated	R125	324804			670,81\$
6 m	Non perforated	R125	324820	633,53\$	652,03\$	670,81\$
9 m	Non perforated	R125	324860	633,53\$		
1500 mm (60 in)**						
6 m	Non perforated	R105	216024 <			On request

Legend :

Plain end : No coupling

C : Soil tight (snap bell)

CG or CGI : Water tight

Identification :

For identification purposes, Solflo Max pipes of 1 050 mm (42 po) and 1 200 mm (48 po) include a white line.

Contact our internal sales team for pricing and lead time on non-listed items.

* Our 1 050 (42 in) and 1 500 mm (60 in) Solflo Max pipe fittings are CG type (in-line bell with gasketed spigot). All other diameters are fitted with CGI (bell with integrated gasket).

** Solflo Max pipes of 1 500 mm (60 in) are available in St-Louis-de-Blandford, Quebec only.

TRIPLEFLO

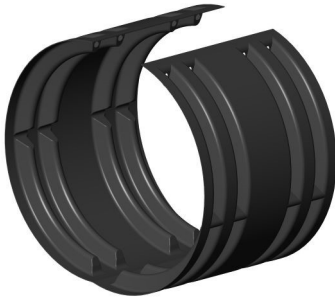
Length	Description	Qty*	Code	Price / Meter	
				Plain end	C
100 mm (4 in)					
3,048 m	Non perforated	90	3P04X10	7,20\$	7,56\$
3,048 m	Perforated	90	3P04X10-4.8	7,20\$	7,56\$



Qty* : Quantity per bundle.

SOLFLO AND SOLFLO MAX COUPLINGS AND ACCESSORIES

Split Coupler



Diameter	Qty C/S*	Code	Unit Price
300 mm (12 in)	NA/160	2M300F	31,07\$
375 mm (15 in)	NA/120	2M375F	43,21\$
450 mm (18 in)	NA/60	2M450F	54,05\$
525 mm (21 in)	NA/30	2M525F	109,75\$
600 mm (24 in)	NA/30	2M600F	111,89\$
750 mm (30 in)	NA/60	2M750F**	178,73\$
900 mm (36 in)	NA/60	2M900F**	201,07\$
1200 mm (48 in)	NA	2M1200F*** <	510,93\$

Model shown
2M300F

** The Solflo and Solflo Max Split Coupler may be sell in one or two pieces. This change may apply without notice and does not affect, in any case, the properties of the product.
*** Two piece split coupling.

* Qty C/P : Quantity per crate/skid.

Clamp Coupling



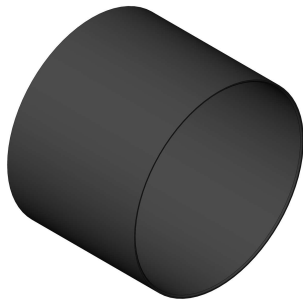
Diameter	Code	Unit Price
1050 mm (42 in)	2M1050ROLLC <	474,38\$
1200 mm (48 in)	2M1200ROLLC <	536,20\$
1500 mm (60 in)	2M1500ROLLC <	906,66\$

Model shown
2M1200ROLLC

Flexible connection that allows a tight assembly between Solflo Max pipes with plain tip.

SOLFLO AND SOLFLO MAX COUPLINGS AND ACCESSORIES

Repair Coupling



Diameter	Code	Unit Price
250 mm (10 in)	33MR10	215,61\$
300 mm (12 in)	33MR12	266,43\$
375 mm (15 in)	33MR15	337,89\$
450 mm (18 in)	33MR18	370,39\$
525 mm (21 in)	33MR21	500,36\$
600 mm (24 in)	33MR24	662,80\$
750 mm (30 in)	33MR30 <	828,49\$
900 mm (36 in)	33MR36 <	994,20\$

Model shown

33MR12

Two gaskets included per repair coupling. Two couplings needed to repair.

MarMac PolySeal Coupler



Diameter	Code	Unit Price
300 mm (12 in)	MM01209054	154,97\$
375 mm (15 in)	MM01510066	163,92\$
450 mm (18 in)	MM01810076	218,60\$
600 mm (24 in)	MM02414098	273,09\$
750 mm (30 in)	MM03015118	343,22\$
900 mm (36 in)	MM03615139	401,55\$
1050 mm (42 in)	MM04220159	447,18\$
1200 mm (48 in)	MM04820181	494,91\$
1500 mm (60 in)	MM06020181	1455,55\$

Model shown

MM01510066

MarMac Clamping Tool

Code	Unit Price
MMTLTNS <	612,67\$

MarMac clamping tools are available for purchase at the price indicated above. They are also available for rental. In this case, 80% of the purchase price will be credited if returned in the same condition as received.

SOLFLO AND SOLFLO MAX COUPLINGS AND ACCESSORIES

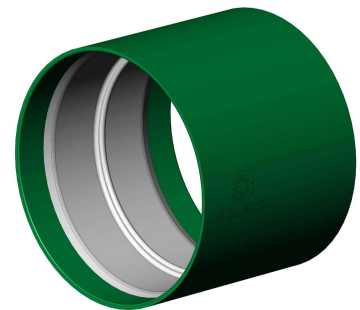
Double Bell

Diameter	Code	Unit Price	
		C	GI
100 mm (4 in)	3MCC004	7,35\$	19,00\$
150 mm (6 in)	3MCC006	15,81\$	38,18\$
200 mm (8 in)	3MCC008	22,21\$	54,14\$
250 mm (10 in)	3MCC010	38,18\$	89,28\$
300 mm (12 in)	3MCC012	41,41\$	100,72\$
375 mm (15 in)	3MCC015	164,03\$	266,43\$
450 mm (18 in)	3MCC018	205,36\$	312,87\$
525 mm (21 in)	3MCC021	260,72\$	397,83\$
600 mm (24 in)	3MCC024	428,22\$	628,55\$
750 mm (30 in)	3MCC030	601,93\$	791,39\$
900 mm (36 in)	3MCC036 <	793,96\$	1040,99\$

Legend :
C : Soil tight (snap bell)
GI : Water tight



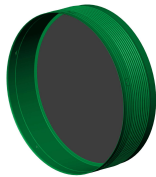
Model shown
3MCC004C



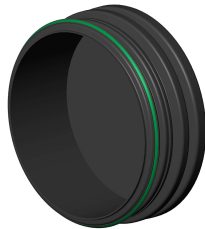
Model shown
3MCC004GI

SOLFLO AND SOLFLO MAX COUPLINGS AND ACCESSORIES

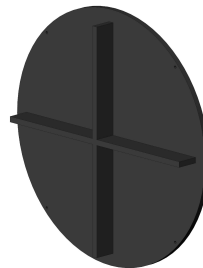
End Cap								
Diameter	Code	C	CV	CG	CGI	M/F	PLA	COL
100 mm (4 in)	2B100		8,90\$	11,14\$				
150 mm (6 in)	2B150	15,81\$		18,94\$				
200 mm (8 in)	2B200	25,36\$		35,32\$				
250 mm (10 in)	2B250	38,18\$		54,00\$				
300 mm (12 in)	2B300	40,02\$		65,06\$				
375 mm (15 in)	2B375 ¹	41,78\$						
450 mm (18 in)	2B450 ¹	54,07\$						
525 mm (21 in)	2B525 ¹	105,12\$						
600 mm (24 in)	2B600 ¹	159,33\$						
750 mm (30 in)	2B750 ¹	352,03\$						
900 mm (36 in)	2B900 ¹	457,02\$					353,41\$	
1050 mm (42 in)	2B1050 <					1824,04\$	1092,84\$	2394,08\$
1200 mm (48 in)	2B1200 <	1831,34\$			2091,00\$		1429,68\$	2559,96\$
1500 mm (60 in)	2B1500 <					3590,88\$	1802,62\$	2626,91\$



Model shown
2B900C



Model shown
2B1050M
Installed on the female end of the pipe.



Model shown
2B1050PLA
Economical, plate that fits all models.



Model shown
2B1050COL
Female cap, installed on the big ripple of the pipe.

Legend :

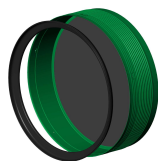
- C/CV : Soil tight (snap bell)
- CG/CGI : Water tight
- M/F : Coupling male or female
- PLA : Coupling with plate
- COL : Clamp coupling

Qty B/C/P:

- 2B100CV : 10/800/NA
- 2B100CG : 10/900/NA
- 2B150C : 5/325/NA
- 2B200C : NA/NA/360
- 2B250C : NA/NA/120

For plate end caps, fixings are not included.

¹To obtain a more watertight end cap, it is possible to add a gasket as shown in the next section.



Model shown
2B900C + MPGO36WS

* Qty B/C/P : Quantity per bag/crate/skid.

SOLFLO AND SOLFLO MAX COUPLINGS AND ACCESSORIES

O-Ring Gasket (HDPE to HDPE)



Model shown
MPGO04

Diameter	Code	Unit Price
100 mm (4 in)	MPGO04	2,24\$
150 mm (6 in)	MPGO06	3,13\$
200 mm (8 in)	MPGO08	9,96\$
250 mm (10 in)	MPGO10	15,82\$
300 mm (12 in)	MPGO12	25,04\$
375 mm (15 in)	MPGO15	38,30\$
450 mm (18 in)	MPGO18	52,06\$
525 mm (21 in)	MPGO21W	105,33\$
600 mm (24 in)	MPGO24WS	107,05\$
750 mm (30 in)	MPGO30WS	118,93\$
900 mm (36 in)	MPGO36WS	144,81\$
1050 mm (42 in)	MPGO42WSP	147,52\$
1200 mm (48 in)	MPGO48WS	152,25\$
1500 mm (60 in)	MPGO60 <	167,48\$

Gasket used to seal a joint between two Solflo Max pipes.

PVC Transition O-Ring Gasket (HDPE to PVC)



Model shown
MPGT08

Diameter	Code	Unit Price
100 mm (4 in)	MPGT04	9,91\$
150 mm (6 in)	MPGT06	12,59\$
200 mm (8 in)	MPGT08	17,01\$
250 mm (10 in)	MPGT10	27,81\$

Gasket used to seal the transition from a PVC pipe to a Solflo Max pipe (female end).

SOLFLO AND SOLFLO MAX COUPLINGS AND ACCESSORIES

22.5 Degree Elbow

Diameter	Code	Unit Price		
		Plain end	C	CGI
100 mm (4 in)	33C2204	20,41\$	35,12\$	49,83\$
150 mm (6 in)	33C2206	32,88\$	60,87\$	88,85\$
200 mm (8 in)	33C2208	49,70\$	87,22\$	124,74\$
250 mm (10 in)	33C2210	73,88\$	138,06\$	202,24\$
300 mm (12 in)	33C2212	117,67\$	183,10\$	248,51\$
375 mm (15 in)	33C2215 <	174,70\$	273,46\$	372,23\$
450 mm (18 in)	33C2218 <	276,38\$	378,65\$	481,03\$
525 mm (21 in)	33C2221 <	290,88\$	451,38\$	611,89\$
600 mm (24 in)	33C2224 <	396,00\$	766,59\$	1137,19\$
750 mm (30 in)	33C2230 <	636,74\$	1090,04\$	1543,33\$
900 mm (36 in)	33C2236 <	902,53\$	1422,36\$	1942,19\$
1050 mm (42 in)	33C2242 <	2610,70\$		4450,79\$
1200 mm (48 in)	33C2248 <	2871,07\$	4595,65\$	4810,41\$



Model shown
33C2212



Model shown
33C2212C



Model shown
33C2212CGI

Legend :

Plain end : No coupling

C : Soil tight (snap bell)

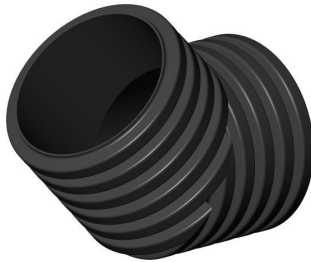
CGI : Water tight

Our 1 050 (42 in) and 1 500 mm (60 in) Solflo Max pipe fittings are CG type (in-line bell with gasketed spigot). All other diameters are fitted with CGI (bell with integrated gasket).

SOLFLO AND SOLFLO MAX COUPLINGS AND ACCESSORIES

45 Degree Elbow

Diameter	Code	Unit Price		
		Plain end	C	CGI
100 mm (4 in)	33C4504	20,41\$	35,12\$	49,83\$
150 mm (6 in)	33C4506	32,88\$	60,87\$	88,85\$
200 mm (8 in)	33C4508	49,70\$	87,22\$	124,74\$
250 mm (10 in)	33C4510	73,88\$	138,06\$	202,24\$
300 mm (12 in)	33C4512	117,67\$	183,10\$	248,51\$
375 mm (15 in)	33C4515 <	174,70\$	273,46\$	372,23\$
450 mm (18 in)	33C4518 <	276,38\$	378,65\$	481,03\$
525 mm (21 in)	33C4521 <	290,88\$	451,38\$	611,89\$
600 mm (24 in)	33C4524 <	396,00\$	766,59\$	1137,19\$
750 mm (30 in)	33C4530 <	636,74\$	1090,04\$	1543,33\$
900 mm (36 in)	33C4536 <	902,53\$	1422,36\$	1942,19\$
1050 mm (42 in)	33C4542 <	3586,60\$		5333,74\$
1200 mm (48 in)	33C4548 <	3706,83\$	5570,74\$	5758,68\$



Model shown
33C4512



Model shown
33C4512C



Model shown
33C4512CGI

Legend :

Plain end : No coupling

C : Soil tight (snap bell)

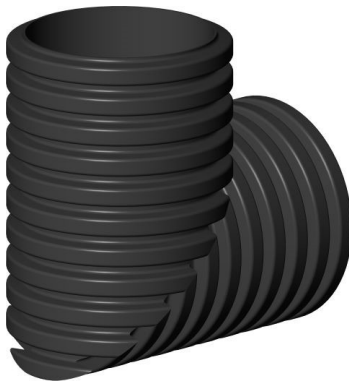
CGI : Water tight

Our 1 050 (42 in) and 1 500 mm (60 in) Solflo Max pipe fittings are CG type (in-line bell with gasketed spigot). All other diameters are fitted with CGI (bell with integrated gasket).

SOLFLO AND SOLFLO MAX COUPLINGS AND ACCESSORIES

90 Degree Elbow

Diameter	Code	Unit Price		
		Plain end	C	CGI
100 mm (4 in)	33C9004	20,41\$	35,12\$	49,83\$
150 mm (6 in)	33C9006	32,88\$	60,87\$	88,85\$
200 mm (8 in)	33C9008	49,70\$	87,22\$	124,74\$
250 mm (10 in)	33C9010	73,88\$	138,06\$	202,24\$
300 mm (12 in)	33C9012	117,67\$	183,10\$	248,51\$
375 mm (15 in)	33C9015 <	174,70\$	273,46\$	372,23\$
450 mm (18 in)	33C9018 <	276,38\$	378,65\$	481,03\$
525 mm (21 in)	33C9021 <	290,88\$	451,38\$	611,89\$
600 mm (24 in)	33C9024 <	396,00\$	766,59\$	1137,19\$
750 mm (30 in)	33C9030 <	636,74\$	1090,04\$	1543,33\$
900 mm (36 in)	33C9036 <	902,53\$	1422,36\$	1942,19\$
1050 mm (42 in)	33C9042 <	2922,34\$		4914,15\$
1200 mm (48 in)	33C9048 <	3289,17\$	5078,71\$	5483,56\$



Model shown
33C9012



Model shown
33C9012C



Model shown
33C9012CGI

Legend :

Plain end : No coupling

C : Soil tight (snap bell)

CGI : Water tight

Our 1 050 (42 in) and 1 500 mm (60 in) Solflo Max pipe fittings are CG type (in-line bell with gasketed spigot). All other diameters are fitted with CGI (bell with integrated gasket).

SOLFLO AND SOLFLO MAX COUPLINGS AND ACCESSORIES

90 Degree Elbow - 3 Sections

Diameter	Code	Unit Price		
		Plain end	C	CGI
100 mm (4 in)	33SC9004 <	37,47\$	57,59\$	84,29\$
150 mm (6 in)	33SC9006 <	76,44\$	153,45\$	220,05\$
200 mm (8 in)	33SC9008 <	119,80\$	173,71\$	268,36\$
250 mm (10 in)	33SC9010 <	122,77\$	178,38\$	275,44\$
300 mm (12 in)	33SC9012 <	295,37\$	437,04\$	621,65\$
375 mm (15 in)	33SC9015 <	401,76\$	594,60\$	682,99\$
450 mm (18 in)	33SC9018 <	472,96\$	599,32\$	724,15\$
525 mm (21 in)	33SC9021 <	498,66\$	705,22\$	798,90\$
600 mm (24 in)	33SC9024 <	615,10\$	1212,97\$	1470,41\$
750 mm (30 in)	33SC9030 <	976,69\$	1779,56\$	2022,97\$
900 mm (36 in)	33SC9036 <	1422,67\$	2296,40\$	2627,09\$
1050 mm (42 in)	33SC9042 <	3608,02\$		5905,53\$
1200 mm (48 in)	33SC9048 <	4536,29\$	6130,87\$	6275,64\$



Model shown
33SC9012



Model shown
33SC9012C



Model shown
33SC9012CGI

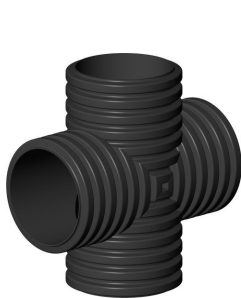
Legend :
Plain end : No coupling
C : Soil tight (snap bell)
CGI : Water tight

Our 1 050 (42 in) and 1 500 mm (60 in) Solflo Max pipe fittings are CG type (in-line bell with gasketed spigot). All other diameters are fitted with CGI (bell with integrated gasket).

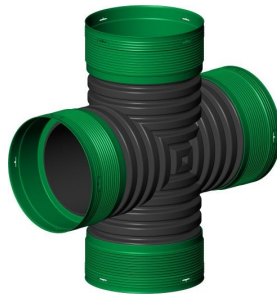
SOLFLO AND SOLFLO MAX COUPLINGS AND ACCESSORIES

Cross

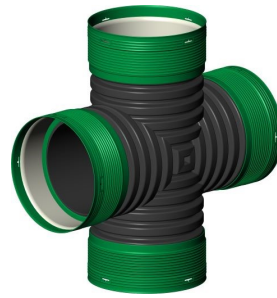
Diameter	Code	Unit Price			
		Plain end	C	CGI	CGPF
100 mm (4 in)	33X0404 <	108,55\$	112,47\$	138,51\$	146,15\$
150 mm (6 in)	33X0606 <	132,78\$	170,51\$	211,74\$	273,40\$
200 mm (8 in)	33X0808 <	161,55\$	201,59\$	318,70\$	335,49\$
250 mm (10 in)	33X1010 <	202,86\$	294,88\$	455,96\$	479,97\$
300 mm (12 in)	33X1212 <	360,16\$	449,60\$	620,91\$	
375 mm (15 in)	33X1515 <	656,26\$	745,13\$	952,16\$	
450 mm (18 in)	33X1818 <	925,77\$	1031,56\$	1246,48\$	
525 mm (21 in)	33X2121 <	1071,72\$	1382,76\$	1570,07\$	
600 mm (24 in)	33X2424 <	1182,12\$	2377,84\$	2892,70\$	
750 mm (30 in)	33X3030 <	1953,37\$	3559,13\$	4045,94\$	
900 mm (36 in)	33X3636 <	2844,81\$	4826,74\$	5254,75\$	
1050 mm (42 in)	33X4242 <	7648,99\$		9649,33\$	
1200 mm (48 in)	33X4848 <	8456,02\$	9706,22\$	10355,27\$	



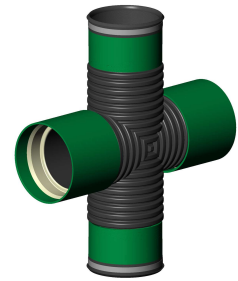
Model shown
33X1212



Model shown
33X1212C



Model shown
33X1212CGI



Model shown
33X0606CGPF

Legend :
Plain end : No coupling
C : Soil tight (snap bell)
CGI : Water tight
CGPF : Water tight PVC female


Our 1 050 (42 in) and 1 500 mm (60 in) Solflo Max pipe fittings are CG type (in-line bell with gasketed spigot). All other diameters are fitted with CGI (bell with integrated gasket).

SOLFLO AND SOLFLO MAX COUPLINGS AND ACCESSORIES

Cross-Reducer

Diameter	Code	Unit Price			
		Plain end	C	CGI	CGPF
150 mm x 100 mm (6 in x 4 in)	33X0604 <	125,22\$	152,71\$	189,02\$	198,97\$
200 mm x 100 mm (8 in x 4 in)	33X0804 <	133,08\$	170,90\$	231,55\$	243,73\$
200 mm x 150 mm (8 in x 6 in)	33X0806 <	137,20\$	174,18\$	264,34\$	278,22\$
250 mm x 100 mm (10 in x 4 in)	33X1004 <	169,81\$	193,36\$	286,90\$	301,99\$
250 mm x 150 mm (10 in x 6 in)	33X1006 <	188,72\$	213,29\$	325,45\$	342,58\$
250 mm x 200 mm (10 in x 8 in)	33X1008 <	196,01\$	242,30\$	381,39\$	401,48\$
300 mm x 100 mm (12 in x 4 in)	33X1204 <	265,18\$	304,57\$	412,56\$	
300 mm x 150 mm (12 in x 6 in)	33X1206 <	293,44\$	367,31\$	451,07\$	
300 mm x 200 mm (12 in x 8 in)	33X1208 <	326,49\$	398,07\$	512,16\$	539,11\$
300 mm x 250 mm (12 in x 10 in)	33X1210 <	356,38\$	406,16\$	581,64\$	
375 mm x 100 mm (15 in x 4 in)	33X1504 <	301,32\$	397,97\$	523,98\$	551,58\$
375 mm x 150 mm (15 in x 6 in)	33X1506 <	346,52\$	435,67\$	570,80\$	
375 mm x 200 mm (15 in x 8 in)	33X1508 <	398,50\$	468,40\$	630,50\$	
375 mm x 250 mm (15 in x 10 in)	33X1510 <	446,32\$	517,86\$	701,95\$	
375 mm x 300 mm (15 in x 12 in)	33X1512 <	499,87\$	587,02\$	785,51\$	
450 mm x 100 mm (18 in x 4 in)	33X1804 <	396,63\$	591,35\$	796,93\$	
450 mm x 150 mm (18 in x 6 in)	33X1806 <	456,12\$	615,00\$	820,84\$	
450 mm x 200 mm (18 in x 8 in)	33X1808 <	524,54\$	642,12\$	845,05\$	
450 mm x 250 mm (18 in x 10 in)	33X1810 <	587,49\$	675,61\$	871,59\$	
450 mm x 300 mm (18 in x 12 in)	33X1812 <	657,99\$	756,69\$	981,61\$	
450 mm x 375 mm (18 in x 15 in)	33X1815 <	791,02\$	901,76\$	1013,73\$	
525 mm x 100 mm (21 in x 4 in)	33X2104 <	444,78\$	689,93\$	923,14\$	
525 mm x 150 mm (21 in x 6 in)	33X2106 <	502,60\$	710,63\$	932,37\$	
525 mm x 200 mm (21 in x 8 in)	33X2108 <	567,94\$	746,16\$	960,35\$	
525 mm x 250 mm (21 in x 10 in)	33X2110 <	641,77\$	753,17\$	998,76\$	
525 mm x 300 mm (21 in x 12 in)	33X2112 <	725,20\$	829,24\$	1017,87\$	
525 mm x 375 mm (21 in x 15 in)	33X2115 <	819,48\$	942,40\$	1075,29\$	
525 mm x 450 mm (21 in x 18 in)	33X2118 <	948,92\$	1260,17\$	1512,21\$	
600 mm x 100 mm (24 in x 4 in)	33X2404 <	462,43\$	805,01\$	1151,36\$	
600 mm x 150 mm (24 in x 6 in)	33X2406 <	531,79\$	829,16\$	1266,50\$	
600 mm x 200 mm (24 in x 8 in)	33X2408 <	611,56\$	1192,77\$	1508,76\$	
600 mm x 250 mm (24 in x 10 in)	33X2410 <	684,95\$	1229,65\$	1555,42\$	
600 mm x 300 mm (24 in x 12 in)	33X2412 <	767,15\$	1357,05\$	1709,47\$	
600 mm x 375 mm (24 in x 15 in)	33X2415 <	859,20\$	1415,90\$	1776,88\$	
600 mm x 450 mm (24 in x 18 in)	33X2418 <	972,06\$	1488,79\$	1853,68\$	
600 mm x 525 mm (24 in x 21 in)	33X2421 <	1125,30\$	1750,17\$	2101,27\$	
750 mm x 100 mm (30 in x 4 in)	33X3004 <	621,71\$	1074,48\$	1430,33\$	
750 mm x 150 mm (30 in x 6 in)	33X3006 <	640,36\$	1106,71\$	1487,55\$	
750 mm x 200 mm (30 in x 8 in)	33X3008 <	672,38\$	1217,38\$	1561,92\$	
750 mm x 250 mm (30 in x 10 in)	33X3010 <	706,00\$	1278,25\$	1640,02\$	
750 mm x 300 mm (30 in x 12 in)	33X3012 <	811,90\$	1791,66\$	2131,29\$	
750 mm x 375 mm (30 in x 15 in)	33X3015 <	885,21\$	1852,04\$	2198,99\$	
750 mm x 450 mm (30 in x 18 in)	33X3018 <	1017,99\$	1973,22\$	2324,08\$	

< : indicates return fee of 50% or more.

 : Product for green infrastructure.

SOLFLO AND SOLFLO MAX COUPLINGS AND ACCESSORIES

Cross-Reducer

Diameter	Code	Unit Price			
		Plain end	C	CGI	CGPF
750 mm x 525 mm (30 in x 21 in)	33X3021 <	1170,69\$	2238,35\$	2575,41\$	
750 mm x 600 mm (30 in x 24 in)	33X3024 <	1267,35\$	2544,18\$	3045,05\$	
900 mm x 100 mm (36 in x 4 in)	33X3604 <	983,39\$	1467,83\$	1854,11\$	
900 mm x 150 mm (36 in x 6 in)	33X3606 <	993,22\$	1511,86\$	1909,74\$	
900 mm x 200 mm (36 in x 8 in)	33X3608 <	1023,02\$	1557,22\$	1967,03\$	
900 mm x 250 mm (36 in x 10 in)	33X3610 <	1053,71\$	1603,94\$	2026,04\$	
900 mm x 300 mm (36 in x 12 in)	33X3612 <	1127,47\$	1844,53\$	2228,64\$	
900 mm x 375 mm (36 in x 15 in)	33X3615 <	1206,39\$	2214,30\$	2648,52\$	
900 mm x 450 mm (36 in x 18 in)	33X3618 <	1290,84\$	2321,90\$	2760,02\$	
900 mm x 525 mm (36 in x 21 in)	33X3621 <	1274,59\$	2608,43\$	3032,77\$	
900 mm x 600 mm (36 in x 24 in)	33X3624 <	1454,08\$	2926,46\$	3514,58\$	
900 mm x 750 mm (36 in x 30 in)	33X3630 <	2051,04\$	3737,09\$	4248,24\$	
1200 mm x 100 mm (48 in x 4 in)	33X4804 <	1532,24\$	3157,02\$	4192,97\$	
1200 mm x 150 mm (48 in x 6 in)	33X4806 <	1641,96\$	3270,16\$	4315,89\$	
1200 mm x 200 mm (48 in x 8 in)	33X4808 <	1645,19\$	3294,71\$	4361,30\$	
1200 mm x 250 mm (48 in x 10 in)	33X4810 <	1762,79\$	3437,73\$	4501,71\$	
1200 mm x 300 mm (48 in x 12 in)	33X4812 <	1915,61\$	3690,87\$	4785,04\$	
1200 mm x 375 mm (48 in x 15 in)	33X4815 <	2041,29\$	3886,58\$	4984,01\$	
1200 mm x 450 mm (48 in x 18 in)	33X4818 <	2059,79\$	3962,08\$	5069,18\$	
1200 mm x 525 mm (48 in x 21 in)	33X4821 <	2795,01\$	4426,62\$	5362,90\$	
1200 mm x 600 mm (48 in x 24 in)	33X4824 <	3065,18\$	4707,92\$	6018,48\$	
1200 mm x 750 mm (48 in x 30 in)	33X4830 <	3391,17\$	5255,35\$	6526,53\$	
1200 mm x 900 mm (48 in x 36 in)	33X4836 <	3789,71\$	6897,78\$	7085,51\$	



Model shown
33X1206



Model shown
33X1206C



Model shown
33X1206CGI



Model shown
33X1206CGPF

Legend :

Plain end : No coupling

C : Soil tight (snap bell)


CGI : Water tight

CGPF : Water tight PVC female

Our **1 050 (42 in)** and **1 500 mm (60 in)** Solflo Max pipe fittings are CG type (in-line bell with gasketed spigot). All other diameters are fitted with CGI (bell with integrated gasket).

Contact our internal sales team for pricing and lead time on non-listed items.

< : indicates return fee of 50% or more.

 : Product for green infrastructure.

SOLFLO AND SOLFLO MAX COUPLINGS AND ACCESSORIES

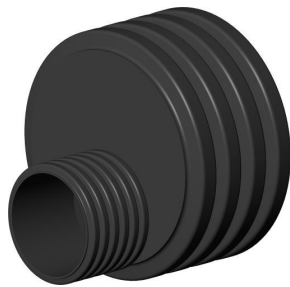
Reducer

Diameter	Code	Unit Price		
		Plain end	C	CGI
150 mm x 100 mm (6 in x 4 in)	33RED0604 <	73,25\$	79,34\$	83,31\$
200 mm x 100 mm (8 in x 4 in)	33RED0804 <	75,43\$	90,02\$	94,52\$
200 mm x 150 mm (8 in x 6 in)	33RED0806 <	78,76\$	99,51\$	104,49\$
250 mm x 100 mm (10 in x 4 in)	33RED1004 <	82,83\$	109,39\$	114,86\$
250 mm x 150 mm (10 in x 6 in)	33RED1006 <	87,76\$	120,71\$	126,75\$
250 mm x 200 mm (10 in x 8 in)	33RED1008 <	92,20\$	128,71\$	135,15\$
300 mm x 100 mm (12 in x 4 in)	33RED1204 <	127,48\$	140,45\$	147,47\$
300 mm x 150 mm (12 in x 6 in)	33RED1206 <	136,01\$	186,16\$	195,47\$
300 mm x 200 mm (12 in x 8 in)	33RED1208 <	139,59\$	197,53\$	207,41\$
300 mm x 250 mm (12 in x 10 in)	33RED1210 <	144,39\$	230,68\$	242,21\$
375 mm x 100 mm (15 in x 4 in)	33RED1504 <	158,78\$	223,95\$	235,15\$
375 mm x 150 mm (15 in x 6 in)	33RED1506 <	166,15\$	238,64\$	250,57\$
375 mm x 200 mm (15 in x 8 in)	33RED1508 <	176,31\$	274,35\$	288,07\$
375 mm x 250 mm (15 in x 10 in)	33RED1510 <	189,05\$	320,73\$	336,77\$
375 mm x 300 mm (15 in x 12 in)	33RED1512 <	194,13\$	333,76\$	350,45\$
450 mm x 100 mm (18 in x 4 in)	33RED1804 <	204,32\$	259,34\$	272,31\$
450 mm x 150 mm (18 in x 6 in)	33RED1806 <	219,59\$	282,26\$	296,37\$
450 mm x 200 mm (18 in x 8 in)	33RED1808 <	234,87\$	307,69\$	323,07\$
450 mm x 250 mm (18 in x 10 in)	33RED1810 <	242,27\$	333,29\$	349,95\$
450 mm x 300 mm (18 in x 12 in)	33RED1812 <	260,20\$	369,39\$	387,86\$
450 mm x 375 mm (18 in x 15 in)	33RED1815 <	346,57\$	430,12\$	451,63\$
525 mm x 100 mm (21 in x 4 in)	33RED2104 <	321,87\$	448,59\$	471,02\$
525 mm x 150 mm (21 in x 6 in)	33RED2106 <	334,59\$	490,16\$	514,67\$
525 mm x 200 mm (21 in x 8 in)	33RED2108 <	350,13\$	540,31\$	567,33\$
525 mm x 250 mm (21 in x 10 in)	33RED2110 <	365,38\$	584,92\$	614,17\$
525 mm x 300 mm (21 in x 12 in)	33RED2112 <	374,81\$	641,93\$	674,03\$
525 mm x 375 mm (21 in x 15 in)	33RED2115 <	389,17\$	679,27\$	713,23\$
525 mm x 450 mm (21 in x 18 in)	33RED2118 <	403,22\$	737,20\$	774,06\$
600 mm x 100 mm (24 in x 4 in)	33RED2404 <	283,21\$	532,07\$	558,67\$
600 mm x 150 mm (24 in x 6 in)	33RED2406 <	318,69\$	586,73\$	616,07\$
600 mm x 200 mm (24 in x 8 in)	33RED2408 <	337,41\$	634,82\$	666,56\$
600 mm x 250 mm (24 in x 10 in)	33RED2410 <	359,54\$	679,76\$	713,75\$
600 mm x 300 mm (24 in x 12 in)	33RED2412 <	385,85\$	727,20\$	763,56\$
600 mm x 375 mm (24 in x 15 in)	33RED2415 <	405,32\$	788,35\$	827,77\$
600 mm x 450 mm (24 in x 18 in)	33RED2418 <	434,85\$	853,04\$	895,69\$
600 mm x 525 mm (24 in x 21 in)	33RED2421 <	456,59\$	895,69\$	940,48\$
750 mm x 100 mm (30 in x 4 in)	33RED3004 <	414,74\$	1261,32\$	1324,39\$
750 mm x 150 mm (30 in x 6 in)	33RED3006 <	467,19\$	1321,39\$	1387,46\$
750 mm x 200 mm (30 in x 8 in)	33RED3008 <	512,97\$	1379,48\$	1448,45\$
750 mm x 250 mm (30 in x 10 in)	33RED3010 <	576,61\$	1409,08\$	1479,53\$
750 mm x 300 mm (30 in x 12 in)	33RED3012 <	621,62\$	1464,47\$	1537,69\$
750 mm x 375 mm (30 in x 15 in)	33RED3015 <	675,09\$	1515,41\$	1591,18\$
750 mm x 450 mm (30 in x 18 in)	33RED3018 <	713,16\$	1568,52\$	1646,95\$
750 mm x 525 mm (30 in x 21 in)	33RED3021 <	739,19\$	1592,98\$	1672,63\$
750 mm x 600 mm (30 in x 24 in)	33RED3024 <	765,22\$	1617,44\$	1698,31\$
900 mm x 100 mm (36 in x 4 in)	33RED3604 <	664,88\$	1345,76\$	1413,05\$
900 mm x 150 mm (36 in x 6 in)	33RED3606 <	725,98\$	1396,78\$	1466,62\$
900 mm x 200 mm (36 in x 8 in)	33RED3608 <	772,53\$	1452,38\$	1525,00\$

SOLFLO AND SOLFLO MAX COUPLINGS AND ACCESSORIES

Reducer

Diameter	Code	Unit Price		
		Plain end	C	CGI
900 mm x 250 mm (36 in x 10 in)	33RED3610 <	815,81\$	1500,87\$	1575,91\$
900 mm x 360 mm (36 in x 12 in)	33RED3612 <	875,85\$	1536,47\$	1613,29\$
900 mm x 375 mm (36 in x 15 in)	33RED3615 <	920,15\$	1585,69\$	1664,97\$
900 mm x 450 mm (36 in x 18 in)	33RED3618 <	980,21\$	1631,32\$	1712,89\$
900 mm x 450 mm (36 in x 21 in)	33RED3621 <	1010,84\$	1657,40\$	1740,27\$
900 mm x 600 mm (36 in x 24 in)	33RED3624 <	1041,47\$	1683,48\$	1767,65\$
900 mm x 750 mm (36 in x 30 in)	33RED3630 <	1093,19\$	1925,32\$	2021,59\$
1050 mm x 300 mm (42 in x 12 in)	33RED4212 <			3489,78\$
1050 mm x 375 mm (42 in x 15 in)	33RED4215 <	1603,91\$		
1050 mm x 600 mm (42 in x 24 in)	33RED4224 <			3688,27\$
1200 mm x 300 mm (48 in x 12 in)	33RED4812 <	1346,61\$		4909,95\$
1200 mm x 375 mm (48 in x 15 in)	33RED4815 <	1385,83\$		
1200 mm x 450 mm (48 in x 18 in)	33RED4818 <	1440,69\$		
1200 mm x 600 mm (48 in x 24 in)	33RED4824 <	1492,70\$	4824,80\$	5066,04\$
1200 mm x 750 mm (48 in x 30 in)	33RED4830 <		5116,78\$	
1200 mm x 900 mm (48 in x 36 in)	33RED4836 <	1593,55\$		5420,45\$



Model shown
33RED1206



Model shown
33RED1206C



Model shown
33RED1206CGI

Legend :

Plain end : No coupling

C : Soil tight (snap bell)

CGI : Water tight

Our 1 050 (42 in) and 1 500 mm (60 in) Solflo Max pipe fittings are CG type (in-line bell with gasketed spigot). All other diameters are fitted with CGI (bell with integrated gasket).

Contact our internal sales team for pricing and lead time on non-listed items.

SOLFLO AND SOLFLO MAX COUPLINGS AND ACCESSORIES

Tee

Diameter	Code	Unit Price			
		Plain end	C	CGI	CGPF
100 mm (4 in)	33T0404	51,18\$	66,00\$	80,81\$	139,49\$
150 mm (6 in)	33T0606	66,76\$	100,40\$	134,02\$	155,40\$
200 mm (8 in)	33T0808	89,73\$	148,29\$	206,84\$	239,87\$
250 mm (10 in)	33T1010	117,89\$	214,16\$	310,43\$	359,95\$
300 mm (12 in)	33T1212	166,57\$	292,57\$	418,55\$	
375 mm (15 in)	33T1515	231,18\$	427,88\$	624,57\$	
450 mm (18 in)	33T1818	292,97\$	525,24\$	757,49\$	
525 mm (21 in)	33T2121 <	442,16\$	730,18\$	1018,19\$	
600 mm (24 in)	33T2424 <	720,27\$	1302,63\$	1884,99\$	
750 mm (30 in)	33T3030 <	1203,32\$	1915,65\$	2627,98\$	
900 mm (36 in)	33T3636 <	1789,01\$	2609,51\$	3430,01\$	
1050 mm (42 in)	33T4242 <	3330,46\$		6894,09\$	
1200 mm (48 in)	33T4848 <	6046,24\$	6831,32\$	8301,37\$	



Model shown

33T1212



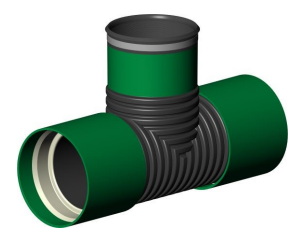
Model shown

33T1212C



Model shown

33T1212CGI



Model shown

33T0606CGPF

Legend :

Plain end : No coupling

C : Soil tight (snap bell)

CGI : Water tight

CGPF : Water tight PVC female


Our 1 050 (42 in) and 1 500 mm (60 in) Solflo Max pipe fittings are CG type (in-line bell with gasketed spigot). All other diameters are fitted with CGI (bell with integrated gasket).

SOLFLO AND SOLFLO MAX COUPLINGS AND ACCESSORIES

Reducer Tee

Diameter	Code	Unit Price				
		Plain end	C	CGI	CGPF	CGPF1
150 mm x 100 mm (6 in x 4 in)	33T0604 <	56,31\$	80,45\$	104,60\$	147,44\$	
200 mm x 100 mm (8 in x 4 in)	33T0804 <	59,53\$	110,97\$	162,39\$	188,33\$	
200 mm x 150 mm (8 in x 6 in)	33T0806 <	73,69\$	129,55\$	185,41\$	222,53\$	
250 mm x 100 mm (10 in x 4 in)	33T1004 <	75,71\$	152,44\$	229,16\$	265,74\$	
250 mm x 150 mm (10 in x 6 in)	33T1006 <	82,36\$	165,26\$	248,16\$	287,77\$	
250 mm x 200 mm (10 in x 8 in)	33T1008 <	107,00\$	191,04\$	275,07\$	318,98\$	
300 mm x 100 mm (12 in x 4 in)	33T1204 <	101,62\$	205,56\$	309,49\$	484,46\$	
300 mm x 150 mm (12 in x 6 in)	33T1206 <	107,59\$	221,23\$	334,86\$	514,18\$	380,87\$
300 mm x 200 mm (12 in x 8 in)	33T1208 <	120,80\$	240,02\$	359,23\$	562,36\$	416,56\$
300 mm x 250 mm (12 in x 10 in)	33T1210 <	152,72\$	272,50\$	392,27\$	614,09\$	454,88\$
375 mm x 100 mm (15 in x 4 in)	33T1504 <	119,22\$	237,45\$	355,66\$	649,48\$	481,10\$
375 mm x 150 mm (15 in x 6 in)	33T1506 <	137,30\$	287,22\$	437,13\$	684,33\$	506,91\$
375 mm x 200 mm (15 in x 8 in)	33T1508 <	162,46\$	314,93\$	467,40\$	731,75\$	542,04\$
375 mm x 250 mm (15 in x 10 in)	33T1510 <	186,63\$	341,54\$	496,44\$	777,11\$	
375 mm x 300 mm (15 in x 12 in)	33T1512 <	196,50\$	365,99\$	535,48\$		
450 mm x 100 mm (18 in x 4 in)	33T1804 <	163,97\$	315,84\$	467,71\$	760,55\$	563,37\$
450 mm x 150 mm (18 in x 6 in)	33T1806 <	174,41\$	357,65\$	540,90\$	827,57\$	613,01\$
450 mm x 200 mm (18 in x 8 in)	33T1808 <	185,44\$	369,59\$	553,74\$	866,82\$	642,09\$
450 mm x 250 mm (18 in x 10 in)	33T1810 <	244,43\$	418,02\$	591,61\$	926,13\$	
450 mm x 300 mm (18 in x 12 in)	33T1812 <	254,84\$	453,33\$	651,82\$		
450 mm x 375 mm (18 in x 15 in)	33T1815 <	281,90\$	472,59\$	663,29\$		
525 mm x 100 mm (21 in x 4 in)	33T2104 <	294,46\$	525,05\$	755,63\$	844,34\$	
525 mm x 150 mm (21 in x 6 in)	33T2106 <	328,16\$	545,28\$	762,40\$	1001,95\$	742,19\$
525 mm x 200 mm (21 in x 8 in)	33T2108 <	345,72\$	568,25\$	790,77\$	1019,98\$	755,54\$
525 mm x 250 mm (21 in x 10 in)	33T2110 <	359,71\$	590,82\$	821,92\$	1147,38\$	
525 mm x 300 mm (21 in x 12 in)	33T2112 <	364,68\$	616,22\$	867,76\$		
525 mm x 375 mm (21 in x 15 in)	33T2115 <	393,11\$	656,03\$	918,95\$		
525 mm x 450 mm (21 in x 18 in)	33T2118 <	438,23\$	703,44\$	968,64\$		
600 mm x 100 mm (24 in x 4 in)	33T2404 <	318,59\$	623,54\$	928,47\$	1492,98\$	
600 mm x 150 mm (24 in x 6 in)	33T2406 <	337,77\$	637,49\$	937,21\$	1616,18\$	1197,17\$
600 mm x 200 mm (24 in x 8 in)	33T2408 <	352,95\$	660,17\$	967,38\$	1794,70\$	1329,41\$
600 mm x 250 mm (24 in x 10 in)	33T2410 <	379,35\$	690,94\$	1002,54\$	1874,96\$	
600 mm x 300 mm (24 in x 12 in)	33T2412 <	404,49\$	729,06\$	1053,62\$		
600 mm x 375 mm (24 in x 15 in)	33T2415 <	439,05\$	771,03\$	1103,00\$		
600 mm x 450 mm (24 in x 18 in)	33T2418 <	487,31\$	850,74\$	1214,17\$		
600 mm x 525 mm (24 in x 21 in)	33T2421 <	545,11\$	953,26\$	1361,40\$		
750 mm x 100 mm (30 in x 4 in)	33T3004 <	516,00\$	1054,01\$	1592,01\$	2180,11\$	1614,90\$
750 mm x 150 mm (30 in x 6 in)	33T3006 <	559,01\$	1092,16\$	1625,31\$	2261,65\$	
750 mm x 200 mm (30 in x 8 in)	33T3008 <	563,00\$	1100,00\$	1636,99\$	2298,60\$	
750 mm x 250 mm (30 in x 10 in)	33T3010 <	609,05\$	1150,49\$	1691,93\$	2418,94\$	
750 mm x 300 mm (30 in x 12 in)	33T3012 <	653,96\$	1208,03\$	1762,10\$		
750 mm x 375 mm (30 in x 15 in)	33T3015 <	669,21\$	1230,97\$	1792,71\$		
750 mm x 450 mm (30 in x 18 in)	33T3018 <	773,11\$	1345,28\$	1917,43\$		
750 mm x 525 mm (30 in x 21 in)	33T3021 <	805,28\$	1443,22\$	2081,16\$		
750 mm x 600 mm (30 in x 24 in)	33T3024 <	955,54\$	1578,67\$	2201,78\$		

< : indicates return fee of 50% or more.

 : Product for green infrastructure.

SOLFLO AND SOLFLO MAX COUPLINGS AND ACCESSORIES

Reducer Tee

Diameter	Code	Unit Price				
		Plain end	C	CGI	CGPF	CGPF1
900 mm x 100 mm (36 in x 4 in)	33T3604 <	876,14\$	1414,74\$	1293,34\$	2531,45\$	
900 mm x 150 mm (36 in x 6 in)	33T3606 <	878,66\$	1419,11\$	1959,55\$	2708,65\$	2006,41\$
900 mm x 200 mm (36 in x 8 in)	33T3608 <	956,67\$	1501,17\$	2045,67\$	2744,60\$	2033,03\$
900 mm x 250 mm (36 in x 10 in)	33T3610 <	962,50\$	1511,18\$	2059,86\$	2860,84\$	
900 mm x 300 mm (36 in x 12 in)	33T3612 <	1040,85\$	1605,38\$	2169,90\$		
900 mm x 375 mm (36 in x 15 in)	33T3615 <	1055,96\$	1629,94\$	2203,91\$		
900 mm x 450 mm (36 in x 18 in)	33T3618 <	1144,94\$	1757,51\$	2370,09\$		
900 mm x 525 mm (36 in x 21 in)	33T3621 <	1242,97\$	1901,81\$	2560,66\$		
900 mm x 600 mm (36 in x 24 in)	33T3624 <	1262,94\$	1947,89\$	2632,84\$		
900 mm x 750 mm (36 in x 30 in)	33T3630 <	1533,79\$	2337,09\$	3140,40\$		
1200 mm x 100 mm (48 in x 4 in)	33T4804 <	1243,69\$	2830,00\$	3856,60\$		
1200 mm x 150 mm (48 in x 6 in)	33T4806 <	1351,69\$	2939,35\$	3970,83\$	7468,74\$	
1200 mm x 200 mm (48 in x 8 in)	33T4808 <	1353,32\$	2951,64\$	3993,55\$	7991,56\$	
1200 mm x 250 mm (48 in x 10 in)	33T4810 <	1464,88\$	3075,91\$	4116,52\$		
1200 mm x 300 mm (48 in x 12 in)	33T4812 <	1541,27\$	3202,48\$	4258,18\$		
1200 mm x 375 mm (48 in x 15 in)	33T4815 <	1656,91\$	3353,47\$	4410,80\$		
1200 mm x 450 mm (48 in x 18 in)	33T4818 <	1666,16\$	3391,27\$	4510,98\$		
1200 mm x 525 mm (48 in x 21 in)	33T4821 <	2728,20\$	3676,33\$	5042,79\$		
1200 mm x 600 mm (48 in x 24 in)	33T4824 <	2830,43\$	3816,83\$	5375,30\$		
1200 mm x 750 mm (48 in x 30 in)	33T4830 <	3037,80\$	4143,25\$	5761,71\$		
1200 mm x 900 mm (48 in x 36 in)	33T4836 <	3395,85\$	6137,19\$	6203,27\$		



Model shown
33T1206



Model shown
33T1206C



Model shown
33T1206CGI



Model shown
33T1206CGPF



Model shown
33T1206CGPF1

Legend :

Plain end : No coupling

C : Soil tight (snap bell)

CGI : Water tight

CGPF : Water tight PVC female connection (with two CGI bells)

CGPF1 : Water tight PVC female connection (with CGI bell)

Our 1 050 (42 in) and 1 500 mm (60 in) Solflo Max pipe fittings are CG type (in-line bell with gasketed spigot). All other diameters are fitted with CGI (bell with integrated gasket).

Contact our internal sales team for pricing and lead time on non-listed items.

SOLFLO AND SOLFLO MAX COUPLINGS AND ACCESSORIES

Wye (Y)

Diameter	Code	Unit Price			
		Plain end	C	CGI	CGPF
100 mm (4 in)	33Y0404 <	57,44\$	72,34\$	86,13\$	99,89\$
150 mm (6 in)	33Y0606 <	72,79\$	119,08\$	165,35\$	220,56\$
200 mm (8 in)	33Y0808 <	99,99\$	170,67\$	241,33\$	279,85\$
250 mm (10 in)	33Y1010 <	154,70\$	247,04\$	339,37\$	393,54\$
300 mm (12 in)	33Y1212 <	232,98\$	320,94\$	408,88\$	
375 mm (15 in)	33Y1515 <	296,46\$	480,32\$	664,17\$	
450 mm (18 in)	33Y1818 <	370,77\$	605,36\$	839,96\$	
525 mm (21 in)	33Y2121 <	534,37\$	839,33\$	1144,29\$	
600 mm (24 in)	33Y2424 <	938,34\$	1498,88\$	2059,41\$	
750 mm (30 in)	33Y3030 <	1625,27\$	2303,75\$	2982,23\$	
900 mm (36 in)	33Y3636 <	2478,27\$	3245,56\$	4012,86\$	
1200 mm (48 in)	33Y4848 <	4716,50\$	7850,16\$	9433,37\$	



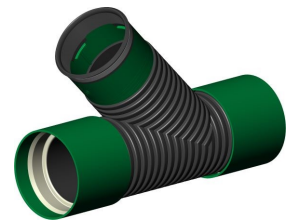
Model shown
33Y1212



Model shown
33Y1212C



Model shown
33Y1212CGI



Model shown
33Y0606CGPF

Legend :

Plain end : No coupling

C : Soil tight (snap bell)

CGI : Water tight

CGPF : Water tight PVC female


Our 1 050 (42 in) and 1 500 mm (60 in) Solflo Max pipe fittings are CG type (in-line bell with gasketed spigot). All other diameters are fitted with CGI (bell with integrated gasket).

SOLFLO AND SOLFLO MAX COUPLINGS AND ACCESSORIES

Wye (Y) Reducer

Diameter	Code	Unit Price			
		Plain end	C	CGI	CGPF
150 mm x 100 mm (6 in x 4 in)	33Y0604 <	92,23\$	125,70\$	160,92\$	194,83\$
200 mm x 100 mm (8 in x 4 in)	33Y0804 <	111,36\$	158,92\$	211,96\$	223,13\$
200 mm x 150 mm (8 in x 6 in)	33Y0806 <	112,11\$	159,99\$	230,00\$	242,11\$
250 mm x 100 mm (10 in x 4 in)	33Y1004 <	114,97\$	189,51\$	276,56\$	291,56\$
250 mm x 150 mm (10 in x 6 in)	33Y1006 <	118,58\$	275,04\$	300,45\$	316,26\$
250 mm x 200 mm (10 in x 8 in)	33Y1008 <	159,99\$	306,07\$	334,35\$	351,95\$
300 mm x 100 mm (12 in x 4 in)	33Y1204 <	139,99\$	296,42\$	346,42\$	372,48\$
300 mm x 150 mm (12 in x 6 in)	33Y1206 <	220,37\$	302,70\$	384,66\$	
300 mm x 200 mm (12 in x 8 in)	33Y1208 <	233,53\$	320,76\$	407,55\$	
300 mm x 250 mm (12 in x 10 in)	33Y1210 <	245,09\$	353,15\$	448,70\$	
375 mm x 100 mm (15 in x 4 in)	33Y1504 <	195,03\$	335,55\$	373,60\$	
375 mm x 150 mm (15 in x 6 in)	33Y1506 <	228,19\$	373,60\$	492,94\$	
375 mm x 200 mm (15 in x 8 in)	33Y1508 <	268,06\$	438,87\$	528,80\$	
375 mm x 250 mm (15 in x 10 in)	33Y1510 <	288,02\$	496,75\$	580,12\$	
375 mm x 300 mm (15 in x 12 in)	33Y1512 <	391,43\$	549,22\$	580,59\$	
450 mm x 100 mm (18 in x 4 in)	33Y1804 <	226,78\$	435,78\$	549,77\$	
450 mm x 150 mm (18 in x 6 in)	33Y1806 <	236,01\$	508,69\$	623,16\$	
450 mm x 200 mm (18 in x 8 in)	33Y1808 <	282,17\$	543,22\$	653,82\$	
450 mm x 250 mm (18 in x 10 in)	33Y1810 <	366,82\$	570,38\$	686,51\$	
450 mm x 300 mm (18 in x 12 in)	33Y1812 <	414,69\$	580,03\$	715,69\$	
450 mm x 375 mm (18 in x 15 in)	33Y1815 <	443,48\$	687,98\$	847,20\$	
525 mm x 100 mm (21 in x 4 in)	33Y2104 <	379,62\$	911,35\$	1025,66\$	
525 mm x 150 mm (21 in x 6 in)	33Y2106 <	436,56\$	956,92\$	1076,94\$	
525 mm x 200 mm (21 in x 8 in)	33Y2108 <	467,12\$	1004,77\$	1130,79\$	
525 mm x 250 mm (21 in x 10 in)	33Y2110 <	490,47\$	1034,91\$	1164,71\$	
525 mm x 300 mm (21 in x 12 in)	33Y2112 <	549,33\$	1065,96\$	1199,65\$	
525 mm x 375 mm (21 in x 15 in)	33Y2115 <	565,81\$	1087,27\$	1223,65\$	
525 mm x 450 mm (21 in x 18 in)	33Y2118 <	577,13\$	1109,02\$	1248,12\$	
600 mm x 100 mm (24 in x 4 in)	33Y2404 <	417,58\$	916,71\$	1084,22\$	
600 mm x 150 mm (24 in x 6 in)	33Y2406 <	450,99\$	967,13\$	1192,64\$	
600 mm x 200 mm (24 in x 8 in)	33Y2408 <	491,58\$	1025,16\$	1311,90\$	
600 mm x 250 mm (24 in x 10 in)	33Y2410 <	533,05\$	1081,29\$	1377,14\$	
600 mm x 300 mm (24 in x 12 in)	33Y2412 <	574,53\$	1137,43\$	1442,38\$	
600 mm x 375 mm (24 in x 15 in)	33Y2415 <	620,49\$	1364,92\$	1514,50\$	
600 mm x 450 mm (24 in x 18 in)	33Y2418 <	873,34\$	1563,11\$	1602,64\$	
600 mm x 525 mm (24 in x 21 in)	33Y2421 <	943,21\$	1688,16\$	1843,04\$	
750 mm x 100 mm (30 in x 4 in)	33Y3004 <	1006,37\$	1278,50\$	1525,80\$	
750 mm x 150 mm (30 in x 6 in)	33Y3006 <	1056,69\$	1342,42\$	1602,09\$	
750 mm x 200 mm (30 in x 8 in)	33Y3008 <	1098,96\$	1409,54\$	1682,20\$	
750 mm x 250 mm (30 in x 10 in)	33Y3010 <	1153,91\$	1478,51\$	1760,29\$	
750 mm x 300 mm (30 in x 12 in)	33Y3012 <	1200,06\$	1547,48\$	1838,39\$	
750 mm x 375 mm (30 in x 15 in)	33Y3015 <	1242,07\$	1617,15\$	1912,33\$	
750 mm x 450 mm (30 in x 18 in)	33Y3018 <	1266,91\$	1737,89\$	2035,01\$	

< : indicates return fee of 50% or more.

 : Product for green infrastructure.

SOLFLO AND SOLFLO MAX COUPLINGS AND ACCESSORIES

Wye (Y) Reducer

Diameter	Code	Unit Price			
		Plain end	C	CGI	CGPF
750 mm x 525 mm (30 in x 21 in)	33Y3021 <	1292,25\$	1901,77\$	2191,99\$	
750 mm x 600 mm (30 in x 24 in)	33Y3024 <	1317,14\$	2091,60\$	2457,51\$	
900 mm x 100 mm (36 in x 4 in)	33Y3604 <	1680,64\$	2352,90\$	2635,25\$	
900 mm x 150 mm (36 in x 6 in)	33Y3606 <	1731,06\$	2423,49\$	2714,31\$	
900 mm x 200 mm (36 in x 8 in)	33Y3608 <	1782,99\$	2496,19\$	2795,74\$	
900 mm x 250 mm (36 in x 10 in)	33Y3610 <	1845,40\$	2583,56\$	2893,59\$	
900 mm x 300 mm (36 in x 12 in)	33Y3612 <	1900,76\$	2661,07\$	2980,39\$	
900 mm x 375 mm (36 in x 15 in)	33Y3615 <	1938,78\$	2714,29\$	3040,00\$	
900 mm x 450 mm (36 in x 18 in)	33Y3618 <	1977,55\$	2768,57\$	3100,80\$	
900 mm x 525 mm (36 in x 21 in)	33Y3621 <	2036,88\$	2851,63\$	3193,83\$	
900 mm x 600 mm (36 in x 24 in)	33Y3624 <	2097,98\$	2937,18\$	3289,64\$	
900 mm x 750 mm (36 in x 30 in)	33Y3630 <	2160,92\$	3025,29\$	3854,13\$	
1200 mm x 100 mm (48 in x 4 in)	33Y4804 <	1780,65\$	2937,22\$	3963,82\$	
1200 mm x 150 mm (48 in x 6 in)	33Y4806 <	1831,06\$	2943,16\$	3974,64\$	
1200 mm x 200 mm (48 in x 8 in)	33Y4808 <	1882,99\$	3063,23\$	4105,14\$	
1200 mm x 250 mm (48 in x 10 in)	33Y4810 <	1945,04\$	3090,24\$	4130,86\$	
1200 mm x 300 mm (48 in x 12 in)	33Y4812 <	2000,76\$	3327,72\$	4383,43\$	
1200 mm x 375 mm (48 in x 15 in)	33Y4815 <	2039,16\$	3495,84\$	4553,17\$	
1200 mm x 450 mm (48 in x 18 in)	33Y4818 <	2077,55\$	3652,08\$	4714,25\$	
1200 mm x 525 mm (48 in x 21 in)	33Y4821 <	2184,24\$	3957,42\$	5065,59\$	
1200 mm x 600 mm (48 in x 24 in)	33Y4824 <	2434,79\$	4251,87\$	5441,72\$	
1200 mm x 750 mm (48 in x 30 in)	33Y4830 <	2744,31\$	4679,11\$	5881,48\$	
1200 mm x 900 mm (48 in x 36 in)	33Y4836 <	3384,48\$	5384,12\$	6589,36\$	



Model shown

33Y1206

Model shown

33Y1206C

Model shown

33Y1206CGI

Model shown

33Y1206CGPF

Legend :

Plain end : No coupling

C : Soil tight (snap bell)

CGI : Water tight

CGPF : Water tight PVC female

Our **1 050 (42 in)** and **1 500 mm (60 in)** Solflo Max pipe fittings are CG type (**in-line bell with gasketed spigot**). All other diameters are fitted with CGI (**bell with integrated gasket**).

Contact our internal sales team for pricing and lead time on non-listed items.

SOLFLO AND SOLFLO MAX COUPLINGS AND ACCESSORIES

Manhole Adapter - PVC Format



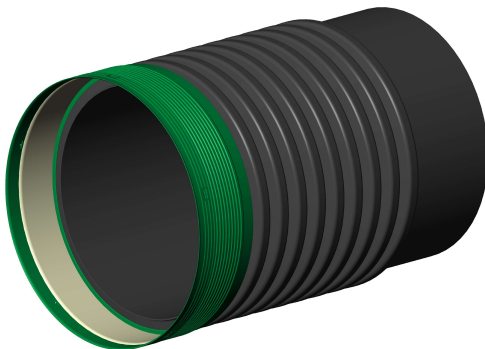
Diameter	Code	Unit Price
100 mm (4 in)	33ADR04	20,17\$
150 mm (6 in)	33ADR06	28,66\$
200 mm (8 in)	33ADR08	42,32\$
250 mm (10 in)	33ADR10	83,66\$
300 mm (12 in)	33ADR12GIP	270,41\$
375 mm (15 in)	33ADR15GIP	304,53\$
450 mm (18 in)	33ADR18GIP	344,51\$
525 mm (21 in)	33ADR21GIP	419,84\$
600 mm (24 in)	33ADR24GIP	638,02\$
750 mm (30 in)	33ADR30GIP <	964,96\$
900 mm (36 in)	33ADR36GIP <	1133,80\$

Model shown

33ADR15GIP

For example, a 450 mm (18 in) manhole adapter will connect a Solflo Max 450 mm (18 in) pipe to a manhole whose aperture will be in the format of a DR35 pipe of the same diameter.

Manhole Adapter For Concrete Entry



Diameter	Code	Unit Price
525 mm (21 in)	33ADR21GIS <	662,97\$
600 mm (24 in)	33ADR24GIS <	799,01\$
750 mm (30 in)	33ADR30GIS	995,67\$
900 mm (36 in)	33ADR36GIS	1339,67\$
1050 mm (42 in)	33ADR42SF* <	2930,62\$
1200 mm (48 in)	33ADR48GIS <	3455,25\$
1500 mm (60 in)	33ADR60SF* <	6920,00\$

Model shown

33ADR36GIS

For example, a 600 mm (24 in) manhole adapter will connect a Solflo Max 600 mm (24 in) manhole to a manhole with a 525 mm (21 in) TBA pipe aperture. Refer to the product technical sheet available at www.soleno.com.

Our 1 050 (42 in) and 1 500 mm (60 in) Solflo Max pipe fittings are CG type (in-line bell with gasketed spigot). All other diameters are fitted with CGI (bell with integrated gasket).

* The 1 050 mm (42 in) (33ADR42SF) and 1 500 mm (60 in) (33ADR60SF) manhole adapters have a female end. Adapters are also available with male ends. 1 050 mm (42 in) : 33ADR42SM and 1 500 mm (60 in) : 33ADR60SM.

SOLFLO AND SOLFLO MAX COUPLINGS AND ACCESSORIES

Universal Sol-Tee



Model shown
33SL041248

Diameter	Code	Unit Price
100 mm (4 in)	33SL041248	143,22\$
150 mm (6 in)	33SL061548	182,57\$
200 mm (8 in)	33SL081848	221,95\$

Other connection options are available. Please refer to your sales representative.

Universal Sol-Tee Saw Bit



Model shown
SM0004

Diameter	Code	Unit Price
100 mm (4 in)	SM0004	762,20\$
150 mm (6 in)	SM0006	942,45\$
200 mm (8 in)	SM0008	1349,30\$
250 mm (10 in)	SM0010	1668,60\$

Sol-tee saw bits are available for purchase at the prices indicated above. They are also available for rental. In this case, 80% of the purchase price will be credited if returned in the same condition as received.

SOLFLO AND SOLFLO MAX COUPLINGS AND ACCESSORIES

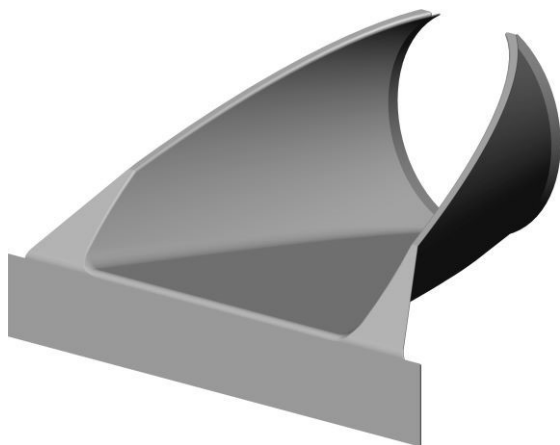
Flared End - HDPE

Diameter	Code	Unit Price
300-375 mm (12-15 in)	EEPLAST1215 <	320,89\$
450 mm (18 in)	EEPLAST18 <	528,90\$
600 mm (24 in)	EEPLAST24 <	913,99\$
900 mm (36 in)	EEPLAST3036 <	1574,44\$



Flared End - Steel

Diameter	Code	Unit Price
300 mm (12 in)	EEACIER12 <	291,10\$
375 mm (15 in)	EEACIER15 <	356,67\$
450 mm (18 in)	EEACIER18 <	451,31\$
600 mm (24 in)	EEACIER24 <	649,96\$
750 mm (30 in)	EEACIER30 <	1163,68\$
900 mm (36 in)	EEACIER36 <	1694,97\$



SOLFLO AND SOLFLO MAX COUPLINGS AND ACCESSORIES

Sacrificial Pipe



Model shown

33TS18

<u>Diameter</u>	<u>Code</u>	<u>Unit Price</u>
< 300 mm (12 in)	33TS12	169,69\$
< 375 mm (15 in)	33TS15	193,01\$
< 450 mm (18 in)	33TS18	413,26\$
< 525 mm (21 in)	33TS21	532,10\$
< 600 mm (24 in)	33TS24	559,22\$
< 750 mm (30 in)	33TS30	703,44\$
< 900 mm (36 in)	33TS36	869,42\$
< 1050 mm (42 in)	33TS42	1102,28\$
< 1200 mm (48 in)	33TS48	1182,75\$
< 1500 mm (60 in)	33TS60	1496,88\$

Steel Cross



Model shown

33XA183P

<u>Diameter</u>	<u>Code</u>	<u>Unit Price</u>
< 450 mm (18 in)	33XA183P	518,29\$
< 525 mm (21 in)	33XA213P	579,77\$
< 600 mm (24 in)	33XA243P	632,48\$
< 750 mm (30 in)	33XA303P	1075,66\$
< 900 mm (36 in)	33XA363P	1178,12\$
< 1050 mm (42 in)	33XA423P	1434,24\$
< 1200 mm (48 in)	33XA483P	1575,08\$
< 1500 mm (60 in)	33XA603P	1946,44\$

BEVELLED PIPE

Pipe with Bevelled End

Diameter	Length	kPa	Code	Unit Price		
				Plain end	C	CGI
300 mm (12 in)	1.3 m	R320	33END12	237,68\$	250,17\$	284,29\$
375 mm (15 in)	1.4 m	R320	33END15	327,80\$	345,04\$	379,16\$
450 mm (18 in)	1.5 m	R320	33END18	401,05\$	422,15\$	453,95\$
525 mm (21 in)	1.6 m	R320	33END21	490,99\$	527,97\$	567,69\$
600 mm (24 in)	1.7 m	R320	33END24	596,37\$	641,63\$	697,41\$
750 mm (30 in)	1.8 m	R320	33END30	1009,76\$	1086,53\$	1194,00\$
900 mm (36 in)	1.9 m	R320	33END36	1343,07\$	1445,57\$	1554,38\$
1200 mm (48 in)	2.0 m	R125	33END48	1786,00\$	1873,00\$	1960,00\$

- Cost of bevelled cut is included in the price.
- Bevelled ends come with a polyethylene band covering and are made of Solflo Max R320 pipe.
- Cutting angle is 2:1(26.6°) - MTQ standards.
- 3:1(18.5°) angle cut available upon request.

Legend :

Plain end : No coupling

C : Soil tight (snap bell)

CGI : Water tight

Model shown

33END18C



Bevelled Cut

Diameter	Price / Cut			
	1:1(45°)	1:2(63,4°)	2:1(26,6°)	3:1(18,5°)
< 300 mm (12 in)	111,48\$	111,48\$	111,48\$	111,48\$
< 375 mm (15 in)	139,41\$	139,41\$	139,41\$	139,41\$
< 450 mm (18 in)	167,25\$	167,25\$	167,25\$	167,25\$
< 525 mm (21 in)	209,08\$	209,08\$	209,08\$	209,08\$
< 600 mm (24 in)	250,88\$	250,88\$	250,88\$	250,88\$
< 750 mm (30 in)	278,75\$	278,75\$	278,75\$	278,75\$
< 900 mm (36 in)	334,52\$	334,52\$	334,52\$	334,52\$
< 1050 mm (42 in)	376,34\$	376,34\$	376,34\$	376,34\$
< 1200 mm (48 in)	418,15\$	418,15\$	418,15\$	418,15\$
< 1500 mm (60 in)	473,91\$	473,91\$	473,91\$	473,91\$

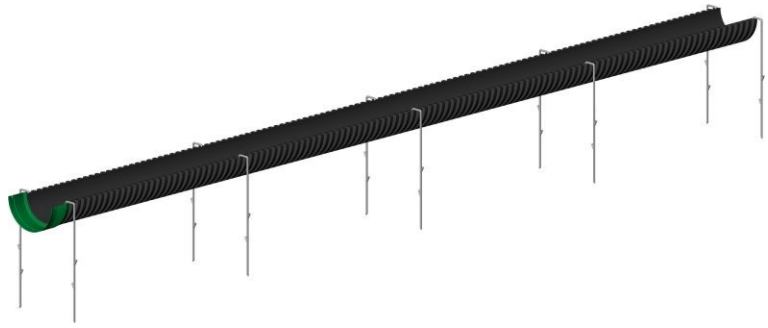
- Our bevelled cuts comply with MTQ regulations.
- The standard MTQ cutting angle is 2:1.
- Bevelled cuts come with a polyethylene band covering and are made of Solflo Max R320 pipe.
- The cutting costs are to be added to the price of a Solflo Max pipe.

SLUICE PIPE

Pipe

Diameter	Length	kPa	Code	Unit Price
< 300 mm (12 in)	6 m	R320	DALOT-321220C	229,73\$
< 375 mm (15 in)	6 m	R320	DALOT-321520C	445,17\$
< 450 mm (18 in)	6 m	R320	DALOT-321820C	578,87\$
< 525 mm (21 in)	6 m	R320	DALOT-322120C	832,91\$
< 600 mm (24 in)	6 m	R320	DALOT-322420C	1089,80\$
< 750 mm (30 in)	6 m	R320	DALOT-323020C	1535,14\$
< 900 mm (36 in)	6 m	R320	DALOT-323620C	2421,95\$
< 1050 mm (42 in)	3.30 m	R140	DALOT-324225CG	2972,55\$
< 1200 mm (48 in)	6 m	R125	DALOT-324820CGI	3101,58\$
< 1500 mm (60 in)	6 m	R105	DALOT-216024CG	On request

Model shown
DALOT-321220C



- Our sludge pipes are sold by the pair only.
- Cost of sludge pipe cut is included in price.
- Anchors sold separately (see below).
- Sludge pipes do not come with a polyethylene band covering.

Anchor

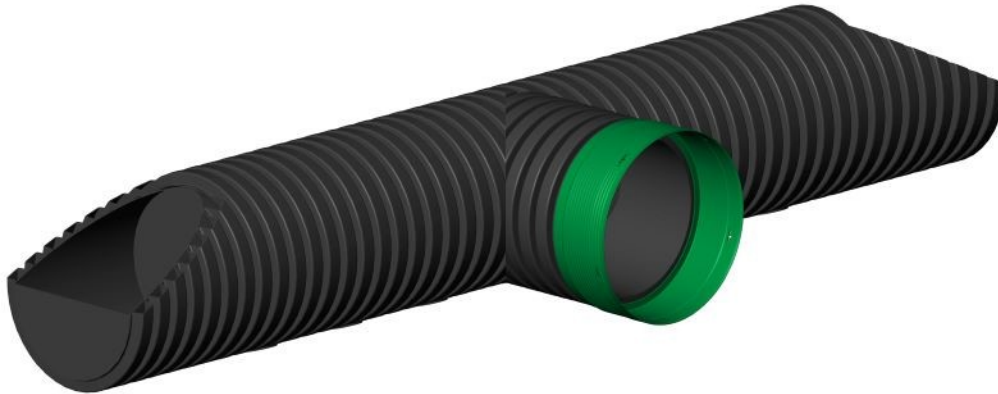
Diameter	Code	Unit Price
< 300 mm (12 in) to 525 mm (21 in)	6ADS012021	71,41\$
< 600 mm (24 in) to 900 mm (36 in)	6ADS024036	76,39\$
< 1050 mm (42 in) to 1200 mm (48 in)	6ADS042048	85,75\$

Two anchors are required at each end of a sludge pipe. The distance between each pair of anchors shall not exceed 1.5 meters.

BEAVER BARRIER

Barrier

Diameter	Code	Unit Price
300 mm (12 in)	33HC12 <	2123,08 \$
450 mm (18 in)	33HC18 <	2680,35 \$

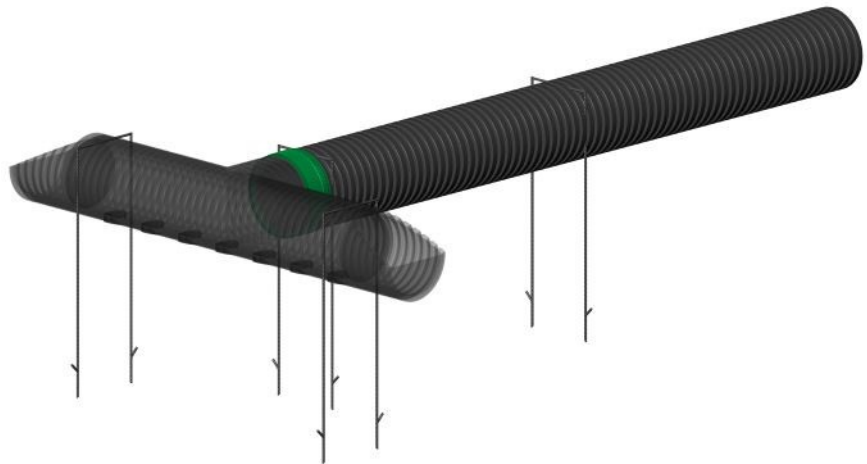


Model shown

33HC18

Anchor

Diameter	Code	Unit Price
300 mm (12 in)	MPANCR12 <	79,85 \$
450 mm (18 in)	MPANCR18 <	83,22 \$



A complete kit consists of one barrier, four anchors and one 9 m (29.54 ft) Solflo Max R210 pipe. All components are sold separately.

ENVIRO-SPAN

Straight Module

Description	Code	Unit Price
< 2 150 mm (7 ft) x 1 070 mm (3.5 ft)	ENSP-900742C	2400,98 \$



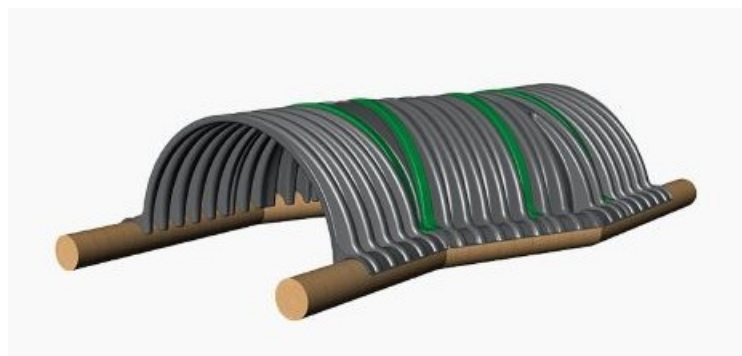
Angle Module

Description	Code	Unit Price
< 23 degree angle	ENSP-910723C	2162,73 \$



Connector

Description	Code	Unit Price
< 2 150 mm (7 ft)	ENSP-920742C	270,19 \$



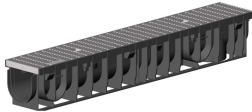
See our brochure at www.soleno.com/en/resource-center/.



CHANNEL

Hauraton Recyfix Pro & NC Channel

	Type	LN	Width	Cl.	Grid Pattern / Material	ADA	Anti Heel	Code	Unit Price
<	PRO	1 m	100mm	B125	Grattings / Galv. Steel			HAU47034	228,45 \$
<	PRO	1 m	100mm	C250	Slot / Polyamide	X	X	HAU47055	181,53 \$
<	PRO	1 m	150mm	B125	Grattings / Galv. Steel			HAU47140	351,20 \$
<	PRO	1 m	150mm	C250	Slot / Polyamide	X	X	HAU47111	313,43 \$
<	PRO	1 m	150mm	C250	Slot long. / Galv. Steel	X		HAU47100 ¹	132,75 \$
<	PRO	1 m	150mm	C250	Slot long. / Galv. Steel	X		HAU31110 ²	451,06 \$
<	PRO	1 m	200mm	B125	Grattings / Galv. Steel			HAU47248	431,66 \$
<	PRO	1 m	200mm	B125	Slot / Polyamide	X	X	HAU47246	359,71 \$
<	NC	1 m	100mm	D400	Slot / Cast Iron	X	X	HAU48771	310,24 \$
<	NC	1 m	100mm	E600	Slot / Cast Iron	X	X	HAU48770	362,88 \$
<	NC	1 m	150mm	D400	Slot / Cast Iron	X		HAU48871	433,84 \$
<	NC	1 m	150mm	E600	Slot / Cast Iron	X		HAU48870	567,53 \$
<	NC	1 m	200mm	D400	Slot / Cast Iron	X		HAU49573	568,01 \$
<	NC	1 m	200mm	E600	Slot / Cast Iron	X		HAU49572	665,95 \$
<	NC	1 m	300mm	D400	Slot / Cast Iron	X		HAU49873	698,74 \$
<	NC	1 m	300mm	E600	Slot / Cast Iron	X		HAU49872	785,50 \$



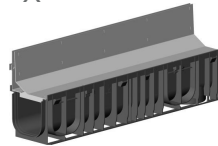
Model shown

HAU47034



Model shown

HAU47055



Model shown

HAU47100 + HAU31110



Model shown

HAU49573

ADA : "Americans with Disabilities Act" compliant (www.ada.gov).

Channels sold individually.

A double bell 3MCC004C is required to connect to a 100 mm (4 in) diameter drainage pipe.

A double bell 3MCC004C or 3MCC004GI is required to connect to a 100 mm (4 in) diameter Solflo Max pipe. A double bell 3MCC006C or 3MCC006GI is required to connect to a 150 mm (6 in) diameter Solflo Max pipe.

A double bell HAU924 is required to connect to a 100 mm (4 in) diameter PVC pipe. A PVC DR35 female section is required to connect to a 150 mm (6 in) diameter PVC pipe. A female or male PVC DR35 section is required to connect to a 200 mm (8 in) diameter PVC pipe. Note that Soleno does not provide PVC pipe.

Two pre-assembled grids included per channel except for the HAU47100 model. Model HAU47100 must be accompanied by model HAU31110, a longitudinal slot grid made of galvanized steel (not pre-assembled).

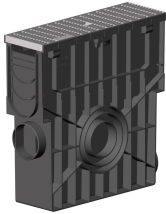
¹ Channel only.



CHANNEL

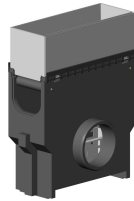
Hauraton Recyfix Pro & NC Vertical Drain

	Type	Width	Cl.	Grid Pattern / Material	ADA	Anti Heel	Basket	Code	Unit Price
<	PRO	100mm	B125	Grattings / Galv. Steel			PVC	HAU47052	288,52 \$
<	PRO	100mm	C250	Slot / Polyamide	X	X	PVC	HAU47054	425,52 \$
<	PRO	150mm	C250	Slot long. / Galv. Steel	X		Galv. Steel	HAU47151 ¹	653,41 \$
<	PRO	150mm	C250	Slot long. / Galv. Steel	X		Galv. Steel	HAU31115 ²	971,63 \$
<	PRO	150mm	B125	Grattings / Galv. Steel			Galv. Steel	HAU47155	1171,82 \$
<	PRO	150mm	C250	Slot / Polyamide	X	X	Galv. Steel	HAU47152	886,74 \$
<	PRO	200mm	B125	Grattings / Galv. Steel			Galv. Steel	HAU47256	1335,97 \$
<	PRO	200mm	B125	Slot / Polyamide	X	X	PVC	HAU47253	978,43 \$
<	NC	100mm	E600	Slot / Cast Iron	X	X	PVC	HAU48753	431,82 \$
<	NC	150mm	E600	Slot / Cast Iron	X		Galv. Steel	HAU48853	951,39 \$
<	NC	200mm	E600	Slot / Cast Iron	X		Galv. Steel	HAU49553	877,98 \$
<	NC	300mm	E600	Slot / Cast Iron	X		Galv. Steel	HAU32338	1276,96 \$



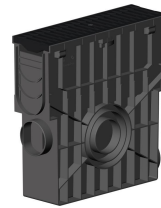
Model shown

HAU47052



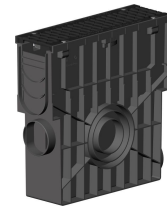
Model shown

HAU47151 + HAU31115



Model shown

HAU47054



Model shown

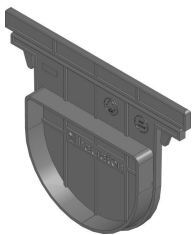
HAU48753

¹ Vertical drain only.

² Cover only.

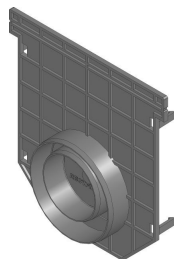
Hauraton Recyfix Pro & NC Accessories

	Code	Description	Unit Price
<	HAU48681	END CAP RX PRO/NC 100 PP CLOSED	20,55 \$
<	HAU40591	END CAP RX PRO/NC 150 PP closed-premolded DN 110	22,16 \$
<	HAU41387	END CAP RX PRO/NC 200, PP, closed-premolded DN 110	24,13 \$
<	HAU49791	END CAP RX PRO/NC 300 galv W PVC DN 200	213,82 \$
<	HAU49783	END CAP RX PRO/NC 300 galv closed	67,87 \$
<	HAU924	DOUBLE BELL HAURATON FOR PVC DN 110	24,84 \$



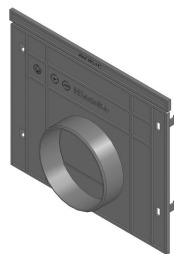
Model shown

HAU48681



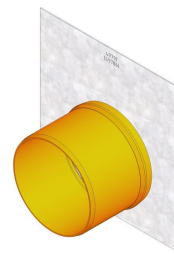
Model shown

HAU40591



Model shown

HAU41387



Model shown

HAU49791



Model shown

HAU49783

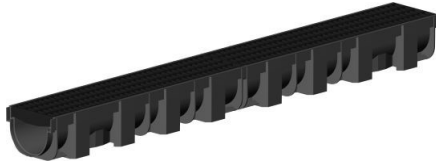
Accessories required for connections are sold separately.



CHANNEL

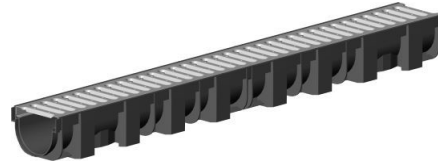
Hauraton Top X Channel

LN	Width	Cl.	Grid Pattern / Material	ADA	Anti Heel	Code	Unit Price
< 1 m	90mm	A15	Caillebotis / Polypropylene	X		HAU44320	38,65 \$
< 1 m	90mm	A15	Footbridge / Galv. Steel	X		HAU44300	48,98 \$



Model shown

HAU44320



Model shown

HAU44300

ADA : "Americans with Disabilities Act" compliant (www.ada.gov).

Channels sold in pallets of 24.

A universal adapter 100 mm (4 in) **1ADRCU04** + installation kit **HAU44343** are required to connect to a 100 mm (4 in) drainage pipe.

A double bell **3MCC004C** or **3MCC004GI** + installation kit **HAU44343** are required to connect to a 100 mm (4 in) Solflo Max pipe.

An installation kit **HAU44343** is required to connect to a 100 mm (4 in) PVC pipe. Note that Soleno does not provide PVC pipe.

Hauraton Top X Accessories

Code	Description	Unit Price
< HAU44343	INSTALLATION KIT CHANNEL TOP X 100	30,00 \$
< HAU44360	CORNER UNIT UNIVERSAL TOP X 137mm	38,38 \$



Model shown

HAU44343



Model shown

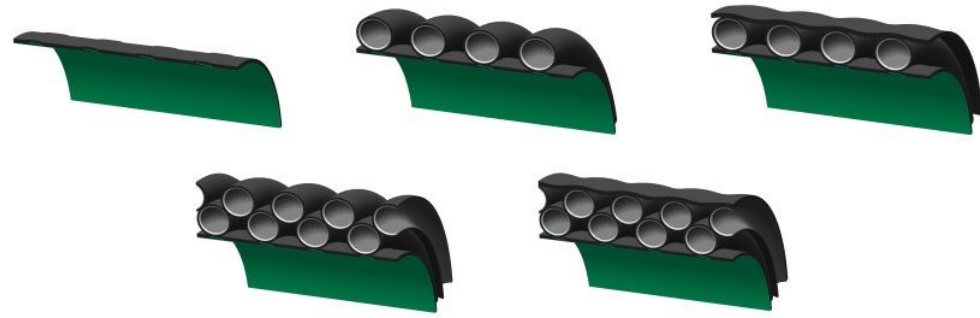
HAU44360

Accessories required for connections are sold separately.

Our Hauraton line of products is available out of St-Jean-sur-Richelieu (Soleno VPR), Quebec only.

KUSTOMFLO
Pipe

Code	Diameter		RSC	Length	Price / Meter
	Inside	Outside			
KRAH24RSC250	600 mm (23.6 in)	27.4 in	250	5.7 m	On request
KRAH32RSC250	800 mm (31.5 in)	35.4 in	250	5.7 m	On request
KRAH40RSC250	1000 mm (39.4 in)	44.3 in	250	5.7 m	On request
KRAH48RSC250	1200 mm (47.2 in)	53.0 in	250	5.7 m	On request
KRAH56RSC250	1400 mm (55.1 in)	62.7 in	250	5.7 m	On request
KRAH60RSC250	1500 mm (59.1 in)	66.6 in	250	5.7 m	On request
KRAH64RSC250	1600 mm (63.0 in)	70.6 in	250	5.7 m	On request
KRAH72RSC250	1800 mm (70.9 in)	78.7 in	250	5.7 m	On request
KRAH80RSC250	2000 mm (78.7 in)	88.0 in	250	5.7 m	On request
KRAH88RSC250	2200 mm (86.6 in)	96.0 in	250	5.7 m	On request
KRAH96RSC250	2400 mm (94.5 in)	103.9 in	250	5.7 m	On request



Gasket

Diameter	Code
600 mm (24 in)	KRAHGARNITURE24
800 mm (32 in)	KRAHGARNITURE32
1000 mm (40 in)	KRAHGARNITURE40
1200 mm (48 in)	KRAHGARNITURE48
1400 mm (56 in)	KRAHGARNITURE56
1500 mm (60 in)	KRAHGARNITURE60
1600 mm (64 in)	KRAHGARNITURE64
1800 mm (72 in)	KRAHGARNITURE72
2000 mm (80 in)	KRAHGARNITURE80
2200 mm (88 in)	KRAHGARNITURE88
2400 mm (96 in)	KRAHGARNITURE96

The pipe is equipped with a gasket bell of 15 PSI. Two gaskets are required per seal. The price of the gaskets is included in the price of the pipe.

Electro-fused bell available on request.

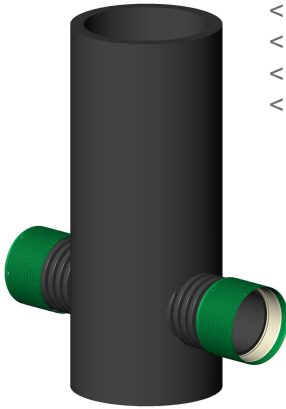
Our KustomFlo line of products is available out of St-Louis-de-Blandford, Quebec.

The KustomFlo pipe can be custom made depending on the application. Contact your sales representative for more information.



SMOOTH EXTERIOR CATCH BASIN

Catch Basin



Diameter	Standard height	Code	Unit Price
< 450 mm (18 in)	2 m (6.56 ft)	33P183P	876,73 \$
< 600 mm (24 in)	2 m (6.56 ft)	33P243P	1199,78 \$
< 750 mm (30 in)	2 m (6.56 ft)	33P303P	1759,48 \$
< 900 mm (36 in)*	2 m (6.56 ft)	33P363P	2350,81 \$

*From 900 mm (36 in), handling components are included (eyelet for 900 mm (36 in) and lifting cable for larger diameters).

Model shown
33P243P

The illustrated connections are not included in the prices.

Additional Height

Diameter	Code	Price / Meter
< 450 mm (18 in)	33PH183P	154,46 \$
< 600 mm (24 in)	33PH243P	223,93 \$
< 750 mm (30 in)	33PH303P	353,35 \$
< 900 mm (36 in)	33PH363P	494,27 \$

Catch Basin 600 mm (24 in)



Diameter	Standard height	Code	Unit Price
< 600 mm (24 in)	1,2 m (3.94 pi)	33P243P12FOND	721,38 \$
< 600 mm (24 in)	1,3 m (4.27 pi)	33P243P13FOND	781,50 \$
< 600 mm (24 in)	1,5 m (4.92 pi)	33P243P15FOND	901,73 \$
< 600 mm (24 in)	1,6 m (5.25 pi)	33P243P16FOND	961,84 \$
< 600 mm (24 in)	1,7 m (5.58 pi)	33P243P17FOND	1021,96 \$
< 600 mm (24 in)	1,8 m (5.91 pi)	33P243P18FOND	1082,07 \$
< 600 mm (24 in)	2,0 m (6.56 pi)	33P243P20FOND	1202,30 \$

Model shown
33P243P20FOND

SMOOTH EXTERIOR MANHOLE

Manhole 750 mm (30 in) - 900 mm (36 in)

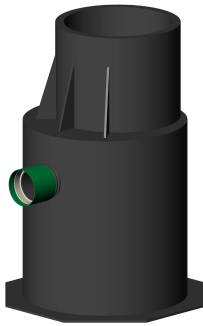


Model shown
33REG363P

Diameter	Standard height	Code	Unit Price
< 750 mm (30 in)	2 m (6.56 ft)	33REG303P	1759,48 \$
< 900 mm (36 in)*	2 m (6.56 ft)	33REG363P	2350,81 \$

*From 900 mm (36 in), handling components are included (eyelet for 900 mm (36 in) and lifting cable for larger diameters).

Manhole 1050 mm (42 po) - 1500 mm (60 po)



Model shown
33REG483P

Diameter	Standard height	Code	Unit Price
< 1050 mm (42 in)*	2 m (6.56 ft)	33REG423P	5550,49 \$
< 1200 mm (48 in)*	2 m (6.56 ft)	33REG483P	6454,08 \$
< 1500 mm (60 in)*	2 m (6.56 ft)	33REG603P	On request

*From 900 mm (36 in), handling components are included (eyelet for 900 mm (36 in) and lifting cable for larger diameters).

The illustrated connections are not included in the prices.

Additional Height

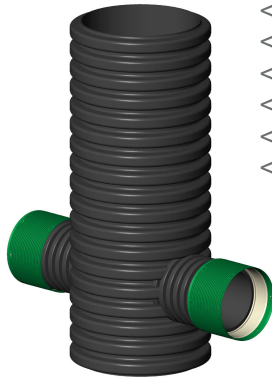
Diameter	Code	Price / Meter
< 750 mm (30 in)	33PH303P	353,35 \$
< 900 mm (36 in)	33PH363P	494,27 \$
< 1050 mm (42 in)	33PH423P	547,25 \$
< 1200 mm (48 in)	33PH483P	622,90 \$
< 1500 mm (60 in)	33PH603P	On request

Structures larger than 1500 mm (60 in) in diameter and up to 3300 mm (132 in) are also available upon request. Contact your sales representative for more information.



CORRUGATED MANHOLE/CATCH BASIN

Catch Basin 300 mm (12 in) - 900 mm (36 in)



Diameter	Standard height	Code	Unit Price
< 300 mm (12 in)	1.3 m (4.27 ft)	33P1200	171,22 \$
< 375 mm (15 in)	1.3 m (4.27 ft)	33P1500	236,59 \$
< 450 mm (18 in)	1.3 m (4.27 ft)	33P1800	296,80 \$
< 600 mm (24 in)	1.3 m (4.27 ft)	33P2400	466,75 \$
< 750 mm (30 in)	1.3 m (4.27 ft)	33P3000	668,85 \$
< 900 mm (36 in)*	1.3 m (4.27 ft)	33P3600	1063,37 \$

*From 900 mm (36 in), handling components are included (eyelet for 900 mm (36 in) and lifting cable for larger diameters).

Model shown

33P2400

The illustrated connections are not included in the prices.

Catch Basin 1050 mm (42 in) - 1500 mm (60 in)



Diameter	Standard height	Code	Unit Price
< 1050 mm (42 in)*	1,5 m (4.92 ft)	33P4200	4296,80 \$
< 1200 mm (48 in)*	1,5 m (4.92 ft)	33P4800	4603,21 \$
< 1500 mm (60 in)*	1,5 m (4.92 ft)	33P6000	On request

*From 900 mm (36 in), handling components are included (eyelet for 900 mm (36 in) and lifting cable for larger diameters).

Model shown

33P4800

The illustrated connections are not included in the prices.

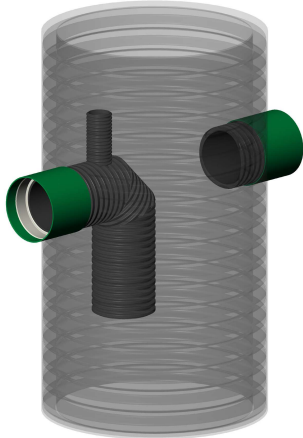
Additional Height

Diameter	Code	Price / Meter
< 300 mm (12 in)	33PH12	36,88 \$
< 375 mm (15 in)	33PH15	54,01 \$
< 450 mm (18 in)	33PH18	73,55 \$
< 600 mm (24 in)	33PH24	114,59 \$
< 750 mm (30 in)	33PH30	222,14 \$
< 900 mm (36 in)	33PH36	341,20 \$
< 1050 mm (42 in)	33PH42	367,94 \$
< 1200 mm (48 in)	33PH48	391,97 \$
< 1500 mm (60 in)	33PH60	On request



SMOOTH EXTERIOR PRETREATMENT CATCH BASIN

Catch Basin



Diameter	Standard height	Code	Unit Price
< 600 mm (24 in)	2 m (6.56 ft)	33PT24	1135,82 \$
< 750 mm (30 in)	2 m (6.56 ft)	33PT30	1759,48 \$
< 900 mm (36 in)*	2 m (6.56 ft)	33PT36	2477,64 \$

*From 900 mm (36 in), handling components are included (eyelet for 900 mm (36 in) and lifting cable for larger diameters).

Model shown
33PT36

The illustrated connections are not included in the prices.

Interior Elbow Of The Pretreatment Catch Basin

Diameter	Code	Unit Price
< 100 mm (4 in)	33PC04	191,50 \$
< 150 mm (6 in)	33PC06	245,95 \$
< 200 mm (8 in)	33PC08	319,76 \$



PERCOLATION CATCH BASIN

Catch Basin



Diameter	Code	Unit Price
< 450 mm (18 in)	33PER18	752,61 \$
< 600 mm (24 in)	33PER24	1053,22 \$
< 750 mm (30 in)	33PER30	1490,32 \$
< 900 mm (36 in)*	33PER36	2194,35 \$

Percolation well units are specifically designed for each project. Final configuration and selected options will determine selling price.

Standard height of 2 meters

*From 900 mm (36 in), handling components are included (eyelet for 900 mm (36 in) and lifting cable for larger diameters).

Structures larger than 900 mm (36 in) in diameter are also available upon request. Contact your sales representative for more information.

Model shown

33PER24

The illustrated connections are not included in the prices.

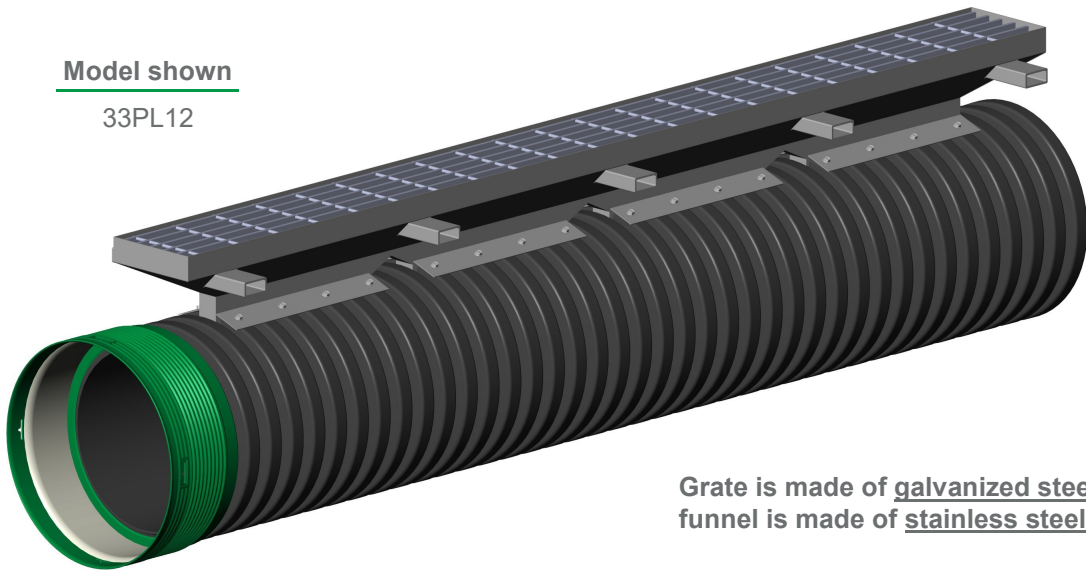
LINEAR CATCH BASIN

Catch Basin

Diameter	Length	Code	Unit Price
< 300 mm (12 in)	2 m	33PL12	4123,76 \$
< 375 mm (15 in)	2 m	33PL15	4274,42 \$
< 450 mm (18 in)	2 m	33PL18	4392,34 \$
< 525 mm (21 in)	2 m	33PL21	4510,52 \$
< 600 mm (24 in)	2 m	33PL24	4652,44 \$

Model shown

33PL12



Grate is made of galvanized steel and funnel is made of stainless steel.

MANHOLE/CATCH BASIN ACCESSORIES

Connection

Diameter	Code	Unit Price			
		Plain end	C	CGI	PVCF
< 100 mm (4 in)	33PS04	58,21\$	65,11\$	71,61\$	157,24\$
< 150 mm (6 in)	33PS06	61,27\$	75,46\$	91,27\$	192,27\$
< 200 mm (8 in)	33PS08	66,05\$	88,73\$	118,02\$	233,61\$
< 250 mm (10 in)	33PS10	71,79\$	110,25\$	150,51\$	280,35\$
< 300 mm (12 in)	33PS12	106,21\$	155,34\$	210,69\$	
< 375 mm (15 in)	33PS15	144,02\$	232,85\$	283,56\$	
< 450 mm (18 in)	33PS18	173,29\$	289,43\$	343,17\$	
< 525 mm (21 in)	33PS21	232,84\$	396,79\$	529,05\$	
< 600 mm (24 in)	33PS24	283,02\$	606,01\$	805,84\$	
< 750 mm (30 in)	33PS30	441,84\$	880,51\$	964,99\$	
< 900 mm (36 in)	33PS36	671,33\$	1166,81\$	1555,24\$	
< 1050 mm (42 in)	33PS42	2962,26\$		3370,06\$	
< 1200 mm (48 in)	33PS48	3224,10\$	3366,00\$	3544,53\$	

Legend :
Plain end : No coupling
C : Soil tight (snap bell)
CGI : Water tight
PVCF : Water tight PVC female



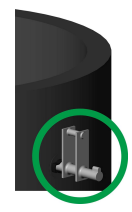
Galvanized Steel Ladder



Installation	Description	Code	Unit Price
< Factory	Ladder leg	ECHEPAT_INS*	109,66\$ / pair
< Factory	Ladder	33ECHEPIED**	146,27\$ / foot

* Minimum 2 pairs required per ladder.
 ** Deduct 17 in (432 mm) from the overall height of your catch basin to determine the required height of the ladder.
 ** The distance between each step is 12 in (305 mm).

Lifting Eyelet



Installation	Code	Unit Price
< Factory	POEILLET_INS	203,00\$ / pair

From 900 mm (36 in), handling components are included (eyelet for 900 mm (36 in) and lifting cable for larger diameters).

MANHOLE/CATCH BASIN ACCESSORIES
Storm Sewer Trap Cover



Factory

<u>Installation</u>	<u>Code</u>	<u>Unit Price</u>
< Factory	OEILLETCLOCHE_INS	117,58 \$

Hook For Retention Bell

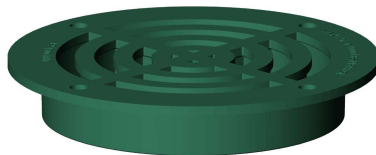


Factory

<u>Installation</u>	<u>Code</u>	<u>Unit Price</u>
< Factory	CROCHETCLOCHE_INS	132,85 \$



HDPE Grid



Model shown
33GP012

<u>Diameter</u>	<u>Code</u>	<u>Unit Price</u>
300 mm (12 in)	33GP012	112,25 \$
375 mm (15 in)	33GP015	173,55 \$
450 mm (18 in)	33GP018	219,61 \$

Restricted to off-road use only.
Screws are included with the grate.

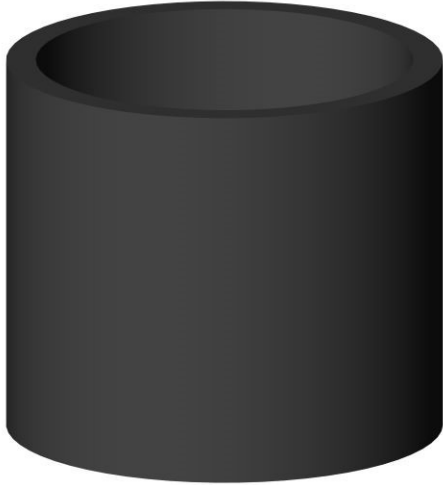
< : indicates return fee of 50% or more.

: Product for green infrastructure.

MANHOLE/CATCH BASIN ACCESSORIES

Fusion Box

	<u>Diameter</u>	<u>Code</u>	<u>Unit Price</u>
<	900 mm (36 in)	33P363P09	916,70 \$



Height of 0,9 m.



CAST IRON

Frame And Grate Kit



Model shown

33FS450HC

Diameter	Code	Unit Price
300 mm (12 in)	33FS300HC	172,47 \$
375 mm (15 in)	33FS375HC	296,02 \$
450 mm (18 in)	33FS450HC	334,30 \$
600 mm (24 in)	33FS600HC	628,48 \$
750 mm (30 in)	33FS750HC	1279,34 \$
900 mm (36 in)	33FS900HC	1472,80 \$

Restricted to off-road use only.

Frame And Cover Kit



Model shown

33FTP36 + 33GC2950

Description	Code	Unit Price
<Frame 450 mm (18 in)	33FTP18	238,89 \$
<Cover 450 mm (18 in)	33GC1800	658,68 \$
<Frame 600 mm (24 in)	33FTP24	352,43 \$
<Cover 600 mm (24 in)	33GC2250	869,84 \$
<Frame 750 mm (30 in)	33FTP30	870,00 \$
<Cover 750 mm (30 in)	33GC2950	1029,17 \$
<Frame 900 mm (36 in)	33FTP36	1084,31 \$
<Cover 900 mm (36 in)	33GC2950	1029,17 \$

Restricted to off-road use only.

Bolt is not included.

Frame And Curved Grate Kit



Model shown

GL-600-B-29

Description	Code	Unit Price
<Frame 300 mm (12 in)	33FTP12	106,42 \$
<Grate 300 mm (12 in)	GS-300-B	321,18 \$
<Frame 450 mm (18 in)	33FTP18	238,89 \$
<Grate 450 mm (18 in)	GL-450-B	677,08 \$
<Grate 600 mm (24 in)	GL-600-B-29*	1348,79 \$

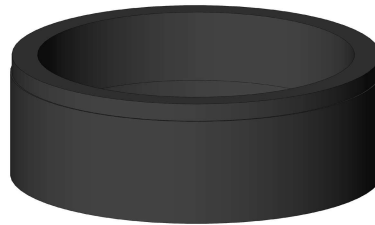
* Frame not required.

Bolt is not included.

RISER FOR MANHOLE/CATCH BASIN WITH SMOOTH EXTERIOR WALL
2 Corrugation Riser

Diameter	Height	Code	Unit Price
< 450 mm (18 in)	149 mm (5.9 in)	33PH182A3P	287,09 \$
< 525 mm (21 in)	151 mm (6 in)	33PH212A3P	374,59 \$
< 600 mm (24 in)	201 mm (7.9 in)	33PH242A3P	465,05 \$
< 750 mm (30 in)	200 mm (7.9 in)	33PH302A3P	839,40 \$
< 900 mm (36 in)	200 mm (7.9 in)	33PH362A3P	880,70 \$

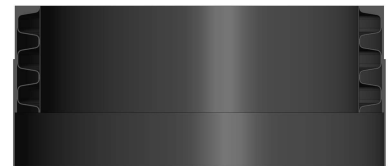
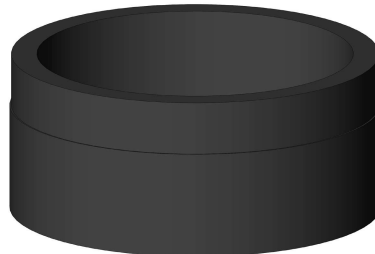
Model shown
33PH242A3P



3 Corrugation Riser

Diameter	Height	Code	Unit Price
< 450 mm (18 in)	223 mm (8.8 in)	33PH183A3P	339,41 \$
< 525 mm (21 in)	227 mm (8.9 in)	33PH213A3P	446,63 \$
< 600 mm (24 in)	301 mm (11.9 in)	33PH243A3P	553,63 \$
< 750 mm (30 in)	300 mm (11.8 in)	33PH303A3P	997,69 \$
< 900 mm (36 in)	300 mm (11.8 in)	33PH363A3P	1048,43 \$

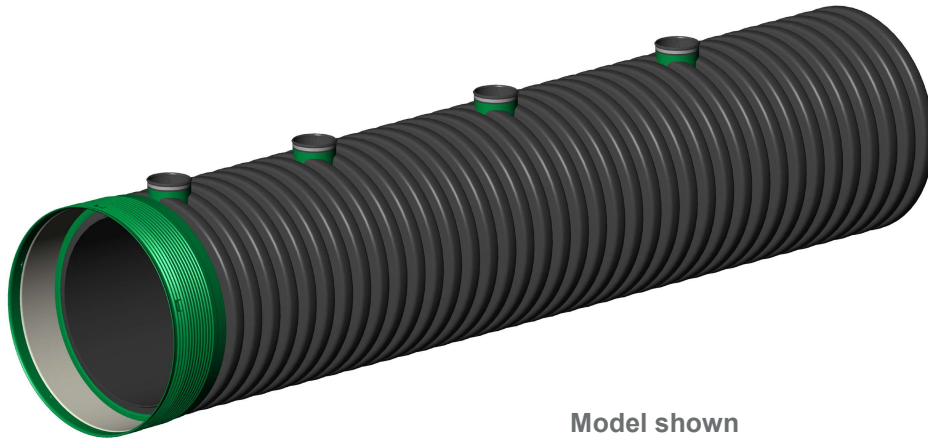
Model shown
33PH363A3P



MONOLITHIC CATCH BASIN INLET / CONNECTION

Welded Connection On Main Pipe

<u>Diameter</u>	<u>Code</u>	<u>Unit Price</u>
< 100 mm (4 in)	33ES04	175,62 \$
< 150 mm (6 in)	33ES06	214,79 \$
< 200 mm (8 in)	33ES08	253,88 \$



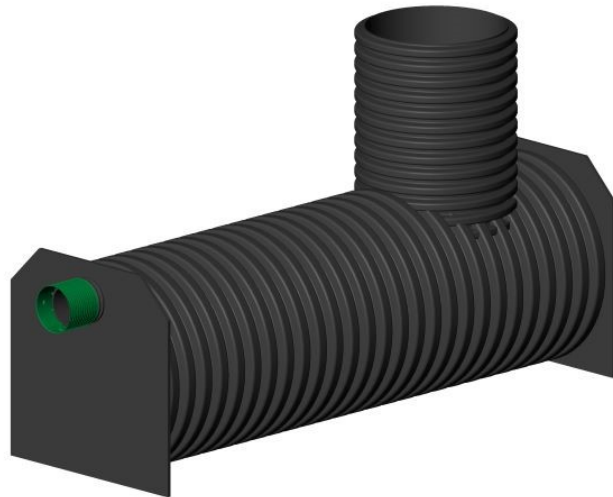
Model shown

33ES06 on a 750 mm (30") Solflo Max pipe

The main pipe connections will be welded in factory on Solflo Max pipes with a diameter of 750 mm (30 in) and more. The price excludes the main pipe.

TANK
Unit

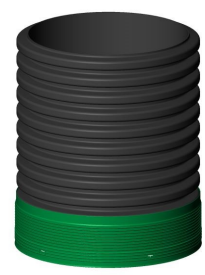
Diameter	Code	Unit Price		
		4 m (13.12')	6 m (19.68')	9 m (29.53')
< 1200 mm (48 in)	R4804C24	On request		
< 1200 mm (48 in)	R4806C24		On request	
< 1200 mm (48 in)	R4809C24			On request
< 1200 mm (48 in)	R4804C36	On request		
< 1200 mm (48 in)	R4806C36		On request	
< 1200 mm (48 in)	R4809C36			On request




Model shown
R4804C36

Chimney

Description	Height	Diameter	Code	Unit Price
< Corrugated ext. (off-road use)		600 mm (24 in)	RC24-1	On request
< Corrugated ext. (off-road use)		900 mm (36 in)	RC36-1	On request



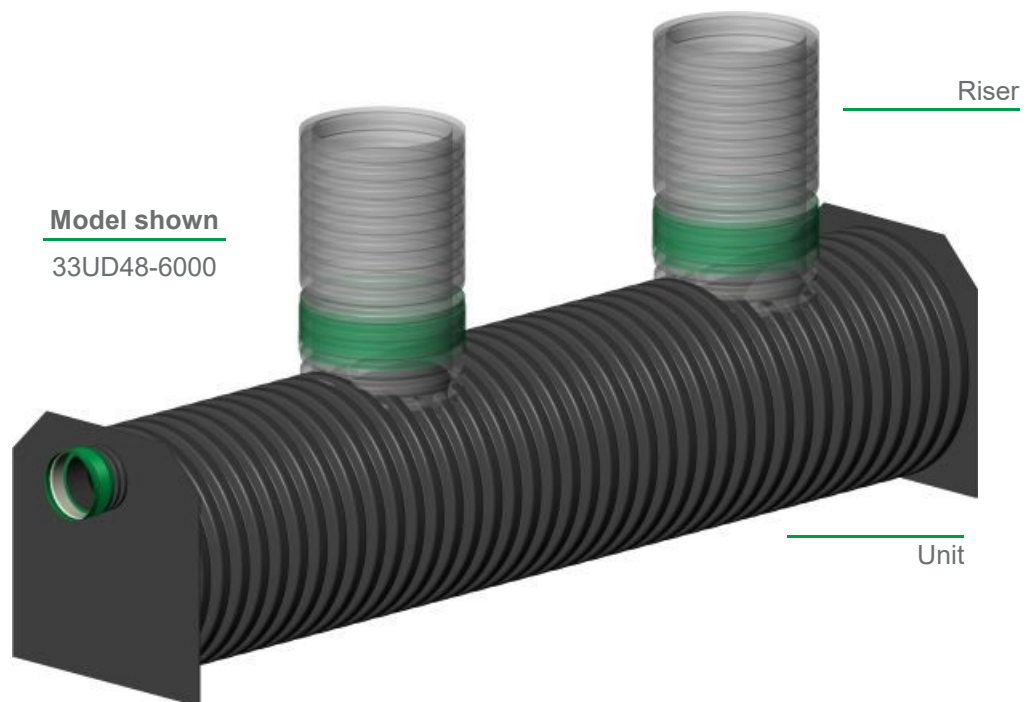
Model shown
RC36-1

< : indicates return fee of 50% or more.
 : Product for green infrastructure.

SETTLING AND SEPARATION TANK FOR STORM WATER
Unit

Diameter	Code	Unit Price	
		-6000 (6 m)	-12000 (12 m)
< 750 mm (30 in)	33UD30	On request	On request
< 900 mm (36 in)	33UD36	On request	On request
< 1200 mm (48 in)	33UD48	On request	On request
< 1500 mm (60 in)	33UD60	On request	On request

The settling and separation unit is designed specifically for each application. The selling price is based on the standard configuration found on the technical sheet of the product available at www.soleno.com. The purchase price will be influenced by the final configuration, as well as the options chosen.



Storm Water Settling and Separation units of more than 1 500 mm (60 in) are available on request.

SETTLING AND SEPARATION TANK FOR STORM WATER

Riser (from 0.3 m to 1 m in height)

Description	Height	Diameter	Code	Unit Price
< Corrugated ext. (off-road use)	1 m (3.28 ft)	750 mm (30 in)	33UPTBC30-A1.0*	834,22\$ / m
< Smooth ext. (roadway use)	1 m (3.28 ft)	750 mm (30 in)	33UPTBC30-L1.0*	1 024,43\$ / m



Model shown
33UPTBC30-A1.0



Model shown
33UPTBC30-L1.0

* **Factory installed.**

Riser (over 1 m in height)

Description	Height	Diameter	Code	Unit Price
< Corrugated ext. (off-road use)	0.4 m (1.31 ft)	750 mm (30 in)	33UPTBC30-A0.4*	624,36\$ / unit
< Corrugated ext. (off-road use)	1 m (3.28 ft)	750 mm (30 in)	33UPTC30-A1.0**	743,36\$ / m
< Smooth ext. (roadway use)	1 m (3.28 ft)	750 mm (30 in)	33UPTC30-L1.0**	1 615,98\$ / m



Model shown
33UPTBC30-A0.4



Model shown
33UPTC30-A1.0



Model shown
33UPTC30-L1.0

* **Factory installed.**

** **To be installed by contractor on jobsite.**

Cast Iron

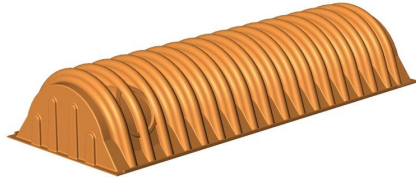
Diameter	Code	Unit Price
< 775 mm (31 in)	33GCUT30TR	951,10\$
< 775 mm (31 in)	33GSL77511S	1500,11\$



RETENTION CHAMBER - STORMCHAMBER

Chamber SC-18

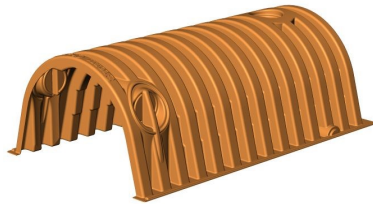
Description	Code	Unit Price
Start unit	SC1801	768,32 \$
End unit	SC1802	768,32 \$
Middle unit	SC1803	768,32 \$
Closed unit	SC1804	768,32 \$



Model shown
SC1801

Chamber SC-34E

Description	Code	Unit Price
Start unit	SC0001	943,51 \$
End unit	SC0002	943,51 \$
Middle unit	SC0003	943,51 \$
Closed unit	SC0004	943,51 \$

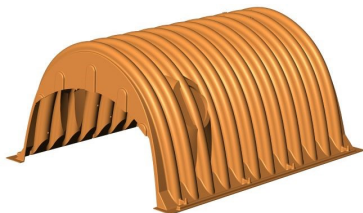


Model shown
SC0003

30 units per pallet.

Chamber SC-44

Description	Code	Unit Price
Start unit	SC4401	1012,99 \$
End unit	SC4402	1012,99 \$
Middle unit	SC4403	1012,99 \$
Closed unit	SC4404	1012,99 \$

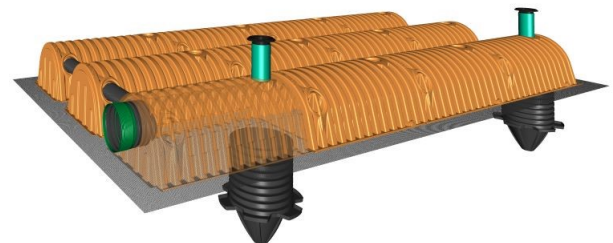


Model shown
SC4403

See our installation vidéo at www.solen.com/en/produits/stormchamber-retention-system/.

Our StormChamber line of products is available out of St-Nicolas, Quebec only.

StormChamber chambers can be orange or black. The color does not affect the properties of the product in any way.





RETENTION CHAMBER - HYDROSTOR

Chamber



Model shown

HS180-CH

Code	Qty / Skid	Unit Price
HS31-CH	45	336,53 \$
HS75-CH	33	666,29 \$
HS180-CH	19	1194,30 \$
HS290-CH	10	1812,03 \$

End Cap



Model shown

HS180-EM

Code	Unit Price
HS31-EM	207,89 \$
HS75-EM	262,32 \$
HS180-EM	950,23 \$
HS290-EM	1313,50 \$

Our HydroStor line of products is available out of St-Nicolas, Quebec only.

Note that the HydroStor retention chamber end cap color may change without notice. The color does not affect, in any case, the properties of the product.



RETENTION CHAMBER - ECOCHAMBER

Chamber

Description	Code	Unit Price
< Middle Chamber Eco 2036	ECOM2036	500,28 \$
< Ecochamber Start Chamber (Green Dot)	ECOD2036	500,28 \$
< Ecochamber End Chamber (Red Dot)	ECOF2036	500,28 \$



Model shown

ECOM2036

Contact our internal sales team for more information.

CHAMBER ACCESSORIES

Sediment Trap



Diameter	Code	Unit Price
< 600 mm (24 in)	SC1805*	1887,02 \$
< 750 mm (30 in)	SC0005**	1887,02 \$

*Compatible with SC-18.

**Compatible with SC-34 and SC-44.

Inspection Port

Description	Code	Unit Price
Ajust. frame/cover 250 mm (10")	33CA10SC <	838,58 \$
Adapter 250 mm (10")	33ADR10	83,66 \$
Transition gasket 250 mm (10")	MPGT10	27,81 \$
Reducer 250mm(10")PVCF X 150mm(6")PVCM HS31	33RED10PVCF06PVCM <	309,36 \$
Reducer 250mm(10")PVCF X 200mm(8")PVCM HS75, HS180, HS29	33RED10PVCF08PVCM <	329,86 \$

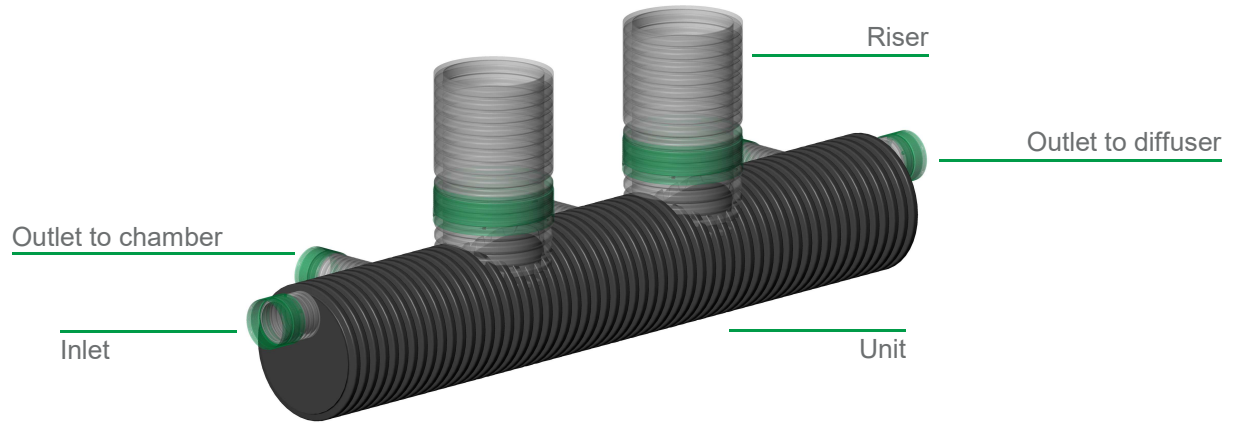


Geotextile

Description	Dimension(s)	Code	Unit Price
< Woven 2006W	4.57 m x 92 m	GTA20059	1534,61 \$
< Woven 2006W HS31	4.57 m x 1.27 m	GTA20059-HS31	47,45 \$
< Woven 2006W HS75, SC18 or ECO2036	4.57 m x 1.70 m	GTA20059-HS75	58,50 \$
< Woven 2006W HS180, SC34 or SC44	4.57 m x 2.38 m	GTA20059-HS180	77,45 \$
< Woven 2006W HS290	4.57 m x 2.96 m	GTA20059-HS290	93,61 \$
< Non-Woven TX-90	3.81 m x 150 m	GT76091	1457,33 \$

PRETREATMENT UNIT

		Unit Price	
		4 m (13.12')	6 m (19.68')
Diameter	Code		
< 900 mm (36 in)	33UPT3604	4634,85\$	
< 900 mm (36 in)	33UPT3606		5800,89\$
< 1050 mm (42 in)	33UPT4204	5236,11\$	
< 1050 mm (42 in)	33UPT4206		6531,85\$
< 1200 mm (48 in)	33UPT4804	6315,52\$	
< 1200 mm (48 in)	33UPT4806		7695,84\$
< 1500 mm (60 in)	33UPT6004	12219,14\$	
< 1500 mm (60 in)	33UPT6006		15684,62\$



Inlet

		Diameter	Code	Unit Price
Model shown 33UPTTE12CGI		< 300 mm (12 in)	33UPTTE12CGI	568,40\$
		< 375 mm (15 in)	33UPTTE15CGI	800,89\$
		< 450 mm (18 in)	33UPTTE18CGI	1022,23\$
		< 525 mm (21 in)	33UPTTE21CGI	1271,31\$
		< 600 mm (24 in)	33UPTTE24CGI	1427,98\$
		< 750 mm (30 in)	33UPTTE30CGI	1496,38\$

Outlet To Chamber

		Diameter	Code	Unit Price
Model shown 33UPTSC12CCGI		< 300 mm (12 in)	33UPTSC12CCGI	466,05\$
		< 375 mm (15 in)	33UPTSC15CCGI	689,66\$
		< 450 mm (18 in)	33UPTSC18CCGI	947,54\$
		< 525 mm (21 in)	33UPTSC21CCGI	1408,00\$
		< 600 mm (24 in)	33UPTSC24CCGI	1676,20\$
		< 750 mm (30 in)	33UPTSC30CCGI	1962,74\$

< : indicates return fee of 50% or more.
 : Product for green infrastructure.

PRETREATMENT UNIT

Outlet To Diffuser

Model shown
33UPTSD12CCGI



Diameter	Code	Unit Price
< 300 mm (12 in)	33UPTSD12CCGI	556,11\$
< 375 mm (15 in)	33UPTSD15CCGI	901,45\$
< 450 mm (18 in)	33UPTSD18CCGI	1308,11\$
< 525 mm (21 in)	33UPTSD21CCGI	1904,46\$
< 600 mm (24 in)	33UPTSD24CCGI	2372,63\$
< 750 mm (30 in)	33UPTSD30CCGI	2895,31\$

Riser (from 0.3 m to 1 m in height)

Description	Height	Diameter	Code	Unit Price
< Corrugated ext. (off-road use)	1 m (3.28 ft)	750 mm (30 in)	33UPTBC30-A1.0*	834,22\$ / m
< Smooth ext. (roadway use)	1 m (3.28 ft)	750 mm (30 in)	33UPTBC30-L1.0*	1 024,43\$ / m



Model shown
33UPTBC30-A1.0

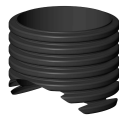


Model shown
33UPTBC30-L1.0

* Factory installed.

Riser (over 1 m in height)

Description	Height	Diameter	Code	Unit Price
< Corrugated ext. (off-road use)	0.4 m (1.31 ft)	750 mm (30 in)	33UPTBC30-A0.4*	624,36\$ / unit
< Corrugated ext. (off-road use)	1 m (3.28 ft)	750 mm (30 in)	33UPTC30-A1.0**	743,36\$ / m
< Smooth ext. (roadway use)	1 m (3.28 ft)	750 mm (30 in)	33UPTC30-L1.0**	1 615,98\$ / m



Model shown
33UPTBC30-A0.4



Model shown
33UPTC30-A1.0



Model shown
33UPTC30-L1.0

* Factory installed.

** To be installed by contractor on jobsite.

Cast Iron

Diameter	Code	Unit Price
775 mm (31 in)	33GCUT30TR	951,10\$
775 mm (31 in)	33GSL77511S	1500,11\$



PLASTIC GEOCELLULAR STORMWATER MANAGEMENT SYSTEM STORMBRIXX

StormBrixx

Description	Unit Price
< StormBrixx HD	On request
< StormBrixx SD	On request



RETENTION BASIN - 900 mm (36")

Components

Description	Unit Price
< Pipe BNQ-CSA SFM R320 N/P 900mm(36") 6M CGI	3600,42 \$
< Elbow 900mm(36") male/female	2120,58 \$
< Tee 900mm(36") male/female	3048,11 \$
< Corrugated Chimney 600mm(24") installed 1m high	675,46 \$
< Corrugated Chimney 900mm(36") installed 1m high (ladder included)	1924,93 \$
< Smooth Exterior Chimney 600mm(24") installed 1m high	940,87 \$
< Smooth Exterior Chimney 900mm(36") installed 1m high (ladder included)	2149,13 \$
< Welded Plate 900mm(36")	995,78 \$



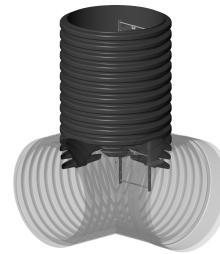
Pipe



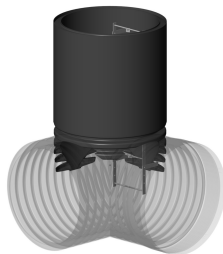
Elbow



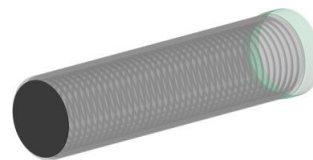
Tee



Corrugated Chimney




Smooth Exterior Chimney



Welded Plate

Contact our internal sales team for more information.

< : indicates return fee of 50% or more.

 : Product for green infrastructure.

RETENTION BASIN - 1200 mm (48")

Components

Description	Unit Price
< Pipe BNQ-CSA SFM R145 N/P 1200mm(48") 6M CGI	4024,86 \$
< Elbow 1200mm(48") male/female	3142,54 \$
< Tee 1200mm(48") male/female	4899,29 \$
< Corrugated Chimney 600mm(24") installed 1m high	675,46 \$
< Corrugated Chimney 900mm(36") installed 1m high (ladder included)	1924,93 \$
< Smooth Exterior Chimney 600mm(24") installed 1m high	940,87 \$
< Smooth Exterior Chimney 900mm(36") installed 1m high (ladder included)	2149,13 \$
< Welded Plate 1200mm(48")	2758,11 \$



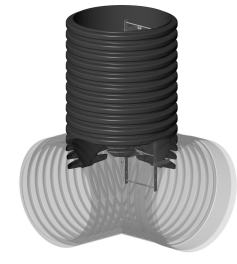
Pipe



Elbow



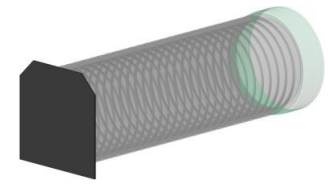
Tee



Corrugated Chimney




Smooth Exterior Chimney



Welded Plate

Contact our internal sales team for more information.

< : indicates return fee of 50% or more.
 : Product for green infrastructure.

CORRUGATED GALVANIZED STEEL PIPE (CSP)

38 mm x 6.5 mm Corrugation Profile (1.5 in x 0.256 in)

Diameter	1,6 mm	2,0 mm	2,8 mm	3,5 mm	Bands / # corrugations		
					3 (8")	5 (12")	9 (22,5")
150 mm (6 in)	64,96\$				38,84\$		
200 mm (8 in)	91,49\$				43,41\$		
250 mm (10 in)	106,96\$				50,37\$		

68 mm x 13 mm Corrugation Profile (2.68 in x 0.51 in)

Diameter	1,6 mm	2,0 mm	2,8 mm	3,5 mm	Bands / # corrugations		
					3 (8")	5 (12")	9 (22,5")
300 mm (12 in)	111,36\$	144,60\$			61,49\$	98,62\$	169,30\$
375 mm (15 in)	131,16\$	168,24\$			70,51\$	113,82\$	194,33\$
400 mm (16 in)	150,96\$	191,88\$			73,64\$	117,58\$	202,52\$
450 mm (18 in)	171,00\$	214,32\$	256,52\$		78,86\$	127,16\$	219,47\$
500 mm (20 in)	191,52\$	239,40\$	331,57\$		84,41\$	136,31\$	235,94\$
600 mm (24 in)	222,65\$	276,42\$	396,83\$		96,02\$	154,92\$	268,64\$
700 mm (28 in)	262,86\$	324,54\$	461,33\$			174,48\$	302,47\$
750 mm (30 in)	278,94\$	348,60\$	494,33\$			184,12\$	324,01\$
800 mm (32 in)	295,14\$	372,42\$	526,43\$			192,94\$	335,26\$
900 mm (36 in)	334,68\$	420,90\$	590,93\$	809,93\$		211,87\$	410,74\$
1000 mm (40 in)		459,90\$	656,93\$	899,93\$		230,95\$	441,62\$
1200 mm (48 in)		553,38\$	786,83\$	1079,17\$		268,64\$	502,76\$

125 mm x 26 mm Corrugation Profile (4.92 in x 1.02 in)

Diameter	1,6 mm	2,0 mm	2,8 mm	3,5 mm	Bands / # corrugations		
					3 (8")	5 (12")	9 (22,5")
1400 mm (56 in)		737,63\$	1045,43\$	1340,33\$		348,56\$	604,93\$
1500 mm (60 in)		788,46\$	1117,57\$	1433,93\$		373,75\$	648,10\$
1600 mm (64 in)		842,33\$	1188,07\$	1532,33\$		386,05\$	670,60\$
1800 mm (72 in)			1333,43\$	1718,17\$			721,67\$
2000 mm (80 in)			1485,58\$	1908,83\$			786,89\$
2200 mm (88 in)			1630,37\$	2093,86\$			850,92\$
2400 mm (96 in)			1770,07\$	2279,86\$			915,97\$
2700 mm (108 in)*				2568,83\$			1082,66\$
3000 mm (120 in)*				2756,63\$			1180,32\$
3300 mm (132 in)*				3023,33\$			1276,39\$
3600 mm (144 in)*				3252,07\$			1373,96\$

- All pipe pricing is expressed in meters.
- Standard pipes are **6, 9 and 12 meters** lengths.
- Non standard lengths available upon request.
- Bevelled cut pricing is equivalent to pricing of a 9 corrugation band.
- All pricing is FOB, Ste-Madeleine, Quebec.
- Accessories available upon request.
- A 9 corrugation band 800 mm to 2400 mm = two pieces.
- A 9 corrugation band 2700 mm to 3600 mm = three pieces.
- Arched and polymer strata pipes are available on request.
- * Oversized pipe : Freight rates available upon request.

ALUMINIZED CORRUGATED STEEL PIPE (ACSP)

38 mm x 6.5 mm Corrugation Profile (1.5 in x 0.256 in)

Diameter	1,6 mm	2,0 mm	2,8 mm	3,5 mm	Bands / # corrugations		
					3 (8")	5 (12")	9 (22,5")
150 mm (6 in)	71,44\$				35.87\$		
200 mm (8 in)	98,06\$				38.99\$		
250 mm (10 in)	115,19\$				44.64\$		

68 mm x 13 mm Corrugation Profile (2.68 in x 0.51 in)

Diameter	1,6 mm	2,0 mm	2,8 mm	3,5 mm	Bands / # corrugations		
					3 (8")	5 (12")	9 (22,5")
300 mm (12 in)	133,98\$	193,87\$			84.12\$	109.12\$	187.98\$
375 mm (15 in)	157,27\$	226,18\$			101.74\$	126.74\$	217.18\$
400 mm (16 in)	180,99\$	258,45\$			106.02\$	131.02\$	226.16\$
450 mm (18 in)	203,87\$	288,99\$			116.97\$	141.97\$	245.79\$
500 mm (20 in)	229,03\$	323,17\$	429,18\$		128.17\$	153.17\$	265.00\$
600 mm (24 in)	265,83\$	375,04\$	510,84\$			175.19\$	302.19\$
700 mm (28 in)	314,28\$	441,33\$	595,38\$			197.45\$	342.15\$
750 mm (30 in)	333,05\$	472,98\$	638,11\$			206.73\$	366.98\$
800 mm (32 in)	352,26\$	505,97\$	678,29\$			217.88\$	380.09\$
900 mm (36 in)	399,08\$	568,84\$	761,92\$			236.27\$	458.55\$
1000 mm (40 in)		621,79\$	845,79\$			257.73\$	493.99\$
1200 mm (48 in)		751,83\$	1012,99\$			301.55\$	564.72\$

125 mm x 26 mm Corrugation Profile (4.92 in x 1.02 in)

Diameter	1,6 mm	2,0 mm	2,8 mm	3,5 mm	Bands / # corrugations		
					3 (8")	5 (12")	9 (22,5")
1400 mm (56 in)		1022,06\$	1422,09\$	1920,42\$		393.75\$	682.46\$
1500 mm (60 in)		1091,88\$	1518,46\$	2052,76\$		422.34\$	731.84\$
1600 mm (64 in)		1172,43\$	1614,92\$	2199,09\$		437.08\$	759.79\$
1800 mm (72 in)			1812,77\$	2465,39\$			819.99\$
2000 mm (80 in)			2019,72\$	2732,01\$			895.54\$
2200 mm (88 in)			2215,41\$	2993,10\$			969.49\$
2400 mm (96 in)			2414,29\$	3266,79\$			1044.76\$
2700 mm (108 in)*				3674,19\$			1144.00\$
3000 mm (120 in)*				4073,66\$			1229.18\$
3300 mm (132 in)*				4477,83\$			1451.99\$
3600 mm (144 in)*				4814,19\$			1564.78\$

- All pipe pricing is expressed in meters.
- Standard pipes are 6, 9 and 12 meters lengths.
- Non standard lengths available upon request.
- Bevelled cut pricing is equivalent to pricing of a 9 corrugation band.
- All pricing is FOB, Ste-Madeleine, Quebec.
- Accessories available upon request.
- A 9 corrugation band 800 mm to 2400 mm = two pieces.
A 9 corrugation band 2700 mm to 3600 mm = three pieces.
- Arched and polymer strata pipes are available on request.
- * Oversized pipe : Freight rates available upon request.

STEEL ACCESSORIES

Steel Eyelet

Code	Unit Price
6OEILLET	170,00 \$

These eyelets are used to reposition the pipes when they are in place in the trench.
Handle pipes using slings.

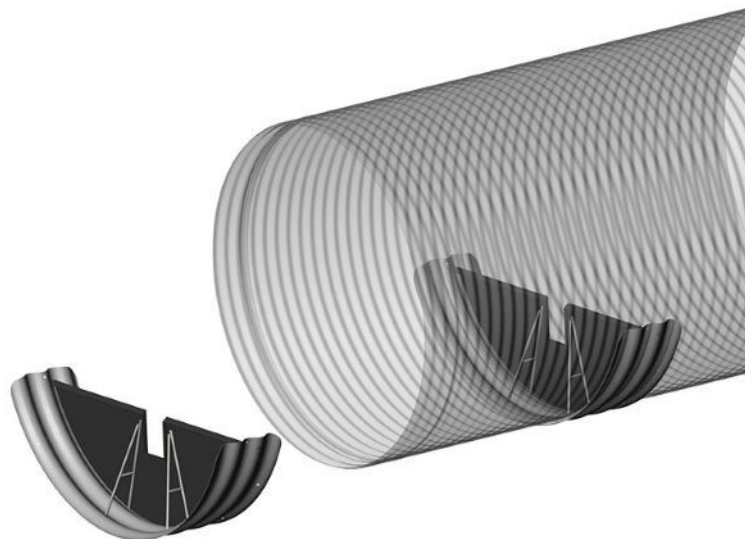
Nuts And Bolts

Diameter	Code	Unit Price
150 mm (6 in)	MPXBOU6	2,18 \$
200 mm (8 in)	MPXBOU8	3,05 \$

REMOVABLE FISH WEIR

For Steel Pipe

Diameter	Code	Unit Price
1200 mm (48 in)	DEVERSOIR1200	1144,45 \$
1400 mm (56 in)	DEVERSOIR1400	1377,32 \$
1500 mm (60 in)	DEVERSOIR1500	1384,11 \$
1600 mm (64 in)	DEVERSOIR1600	1392,47 \$
1800 mm (72 in)	DEVERSOIR1800	1409,41 \$
2000 mm (80 in)	DEVERSOIR2000	1458,54 \$
2200 mm (88 in)	DEVERSOIR2200	1519,05 \$
2400 mm (96 in)	DEVERSOIR2400	1567,49 \$
2700 mm (108 in)	DEVERSOIR2700	1643,57 \$
3000 mm (120 in)	DEVERSOIR3000	1699,05 \$
3300 mm (132 in)	DEVERSOIR3300	1773,45 \$
3600 mm (144 in)	DEVERSOIR3600	1868,39 \$





GEOTEXTILES

	Dimension(s)	Application(s)	Code	Price / Sq m
Epurtext				
	1.5 m x 50 m (1.64 yd x 54.68 yd)	A	GTEP15050	2,27 \$
	<u>Surface area</u> : 75 sq m (89.70 sq yd)			
	3 m x 150 m (3.28 yd x 164.04 yd)	A	GTEP30150	2,27 \$
	<u>Surface area</u> : 450 sq m (538.20 sq yd)			
TX-80				
	1.75 m x 30 m (1.91 yd x 32.81 yd)	B & C	GT76073	2,73 \$
	<u>Surface area</u> : 52.5 sq m (62.79 sq yd)			
	1.17 m x 150 m (1.28 yd x 164.04 yd)	B & C	GT76074	2,60 \$
	<u>Surface area</u> : 175.5 sq m (209.90 sq yd)			
	1.75 m x 150 m (1.91 yd x 164.04 yd)	B & C	GT76075	2,60 \$
	<u>Surface area</u> : 262.5 sq m (313.95 sq yd)			
	0.7 m x 50 m (0.77 yd x 54.68 yd)	B & C	GT76078	2,83 \$
	<u>Surface area</u> : 35 sq m (41.86 sq yd)			
	3.5 m x 150 m (3.83 yd x 164.04 yd)	B & C	GT76079	2,60 \$
	<u>Surface area</u> : 525 sq m (627.89 sq yd)			
TX-170 - BNQ Certified				
	3.81 m x 100 m (4.17 yd x 109.36 yd)	C & E	GT76120 <	3,50 \$
	<u>Surface area</u> : 381 sq m (455.67 sq yd)			
TX-F				
	3.5 m x 50 m (3.83 yd x 54.68 yd)	D	GT76165F	4,68 \$
	<u>Surface area</u> : 175 sq m (209.30 sq yd)			
	3.5 m x 100 m (3.83 yd x 109.36 yd)	D	GT76169F	4,68 \$
	<u>Surface area</u> : 350 sq m (418.60 sq yd)			

APPLICATION(S) :

- A- Wastewater disposal field.
- B- Drainage trenches, filter-envelopes (perforated pipes), behind retaining walls (gabions, concrete).
- C- Roads and accessways, residential driveways, sidewalks, parking lots.
- D- Embossment at culvert ends, road development in forestry.
- E- Protection of geomembranes, aquatic basins.



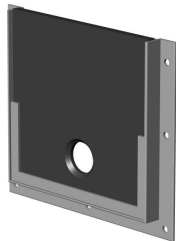
FLOW REGULATOR

Plug Style Flow Regulator



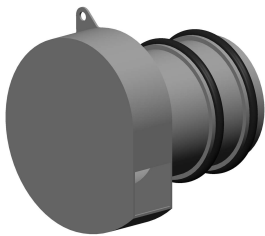
<u>Diameter</u>	<u>Code</u>	<u>Unit Price</u>
< 150 mm (6 in)	33RD06IPEXBOUCHON	On request
< 200 mm (8 in)	33RD08IPEXBOUCHON	On request
< 250 mm (10 in)	33RD10IPEXBOUCHON	On request
< 300 mm (12 in)	33RD12IPEXBOUCHON	On request
< 375 mm (15 in)	33RD15IPEXBOUCHON	On request
< 450 mm (18 in)	33RD18IPEXBOUCHON	On request
< 600 mm (24 in)	33RD24IPEXBOUCHON	On request

Plate Flow Regulator



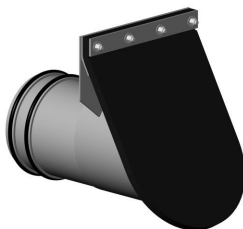
<u>Diameter</u>	<u>Code</u>	<u>Unit Price</u>
< 150 mm (6 in)	33RD06IPEXPLAQUE	On request
< 200 mm (8 in)	33RD08IPEXPLAQUE	On request
< 250 mm (10 in)	33RD10IPEXPLAQUE	On request
< 300 mm (12 in)	33RD12IPEXPLAQUE	On request
< 375 mm (15 in)	33RD15IPEXPLAQUE	On request
< 450 mm (18 in)	33RD18IPEXPLAQUE	On request
< 600 mm (24 in)	33RD24IPEXPLAQUE	On request

Vortex Flow Regulator



<u>Diameter</u>	<u>Unit Price</u>
< 200 mm (8 in)	On request
< 250 mm (10 in)	On request
< 300 mm (12 in)	On request
< 350 mm (14 in)	On request
< 450 mm (18 in)	On request
< 500 mm (20 in)	On request
< 550 mm (22 in)	On request
< 600 mm (24 in)	On request
< 700 mm (28 in)	On request

Check Valve



<u>Diameter</u>	<u>Unit Price</u>
< 100 mm (4 in)	On request
< 150 mm (6 in)	On request
< 200 mm (8 in)	On request
< 250 mm (10 in)	On request