

# UNIVERSAL SOL-TEE

## INSTALLATION GUIDE

The saddle should be stored at a temperature above 15 °C (59 °F) before installation.

### MATERIAL REQUIRED

- Hand drill
- Hole saw
- Universal Sol-Tee
- Lubricant containing no petroleum products
- Flat screwdriver
- File or knife
- Grinder

#### HOLE SAW

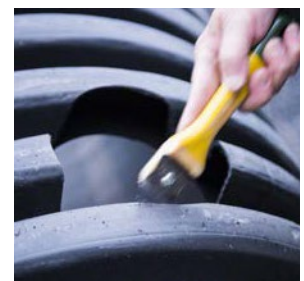
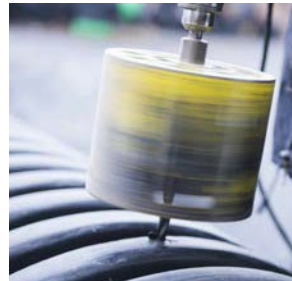
Sol-Tee diameter	Hole saw diameter
100 mm (4 in)	112.5 mm (4.5 in)
150 mm (6 in)	162.5 mm (6.5 in)
200 mm (8 in)	218.8 mm (8.75in)



HOLE SAW

### DRILLING AND DEBURRING

- Drill the opening of the appropriate diameter, according to the dimensions in the table above. The opening should be positioned in the center of the ring, as shown.
- Thoroughly deburr the perimeter of the opening in order to avoid any possible leakage.



### INSERTING THE SADDLE

- Align the guidelines of the two pieces of the saddle, as shown.
- After inserting your arm inside the saddle, grasp the end and pull it inwards.
- Insert the saddle into the opening and then release the end.



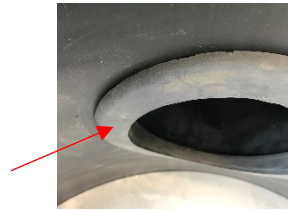
GROOVE

GUIDE LINE



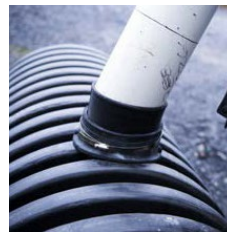
## INITIAL POSITIONING AND CLAMPING

- Align the two saddle bulges with the pipe ring.
- Pull on the portion of the saddle that fits inside the host pipe while keeping the outer part in contact with the outside wall of the host pipe.
- Make sure that the inner lip is pressed perfectly against the inside of the host pipe.
- Tighten (screw) the steel clamp slightly to hold both parts in place. Do not tighten too much, as this will interfere with the insertion of the PVC pipe.



## LUBRICATION AND INSTALLATION OF THE PVC PIPE

- Apply lubricant to the saddle inlet approximately 38 mm (1.5 in) deep over the entire inner circumference.
- Mark an insertion line on the PVC pipe at 197 mm (7.75 in) from the spigot end.
- Using a grinder, bevel the spigot of the PVC pipe about 25 mm (1 in) high over the entire circumference to facilitate the insertion of the PVC pipe.
- Insert the PVC pipe into the saddle up to the insertion line.
- **CAUTION** : If the length inserted in the saddle exceeds 197 mm (7.75 in), the PVC pipe will create a penetrating connection. If less, the contact between the saddle and the HDPE pipe will be insufficient and may cause leaks.



## FINAL POSITIONING

- Slightly pull on the assembly (saddle and PVC) to ensure that the inner lip is pressed perfectly against the inside of the host pipe.
- Gently lower the outer part of the saddle to ensure that the outer lip is in contact with the rings of the pipe.
- Fully tighten the steel clamp.

