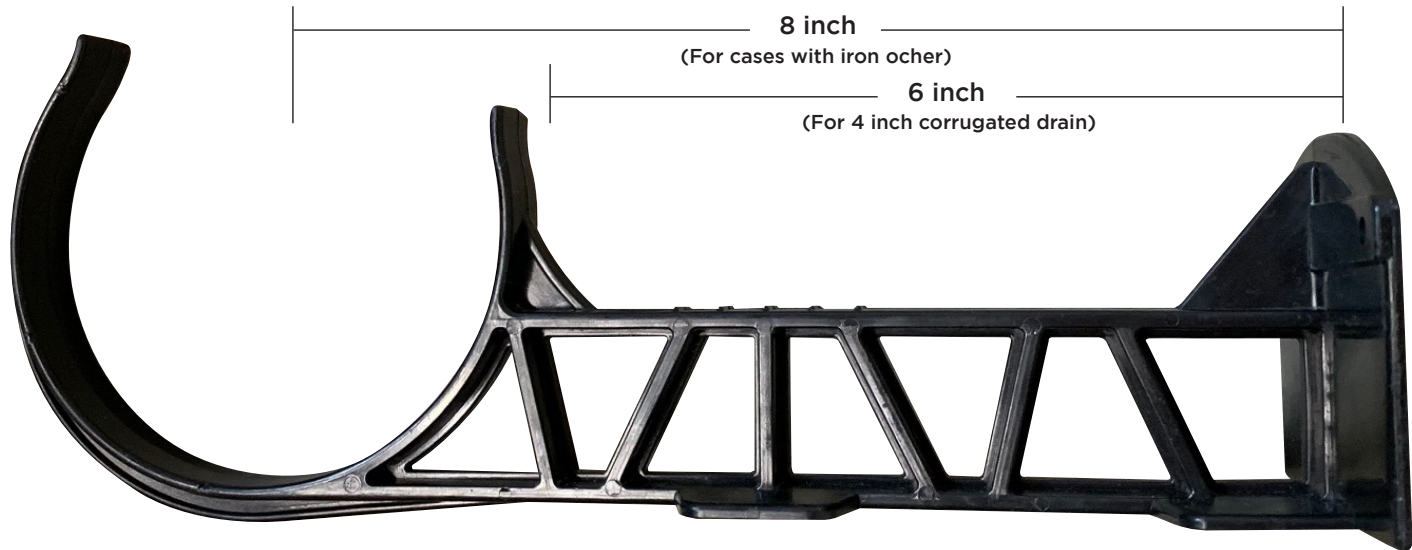


NEW PRODUCT!

DRAIN SUPPORT FOR FLEXIBLE AND RIGID PIPES

Respects APCHQ standards

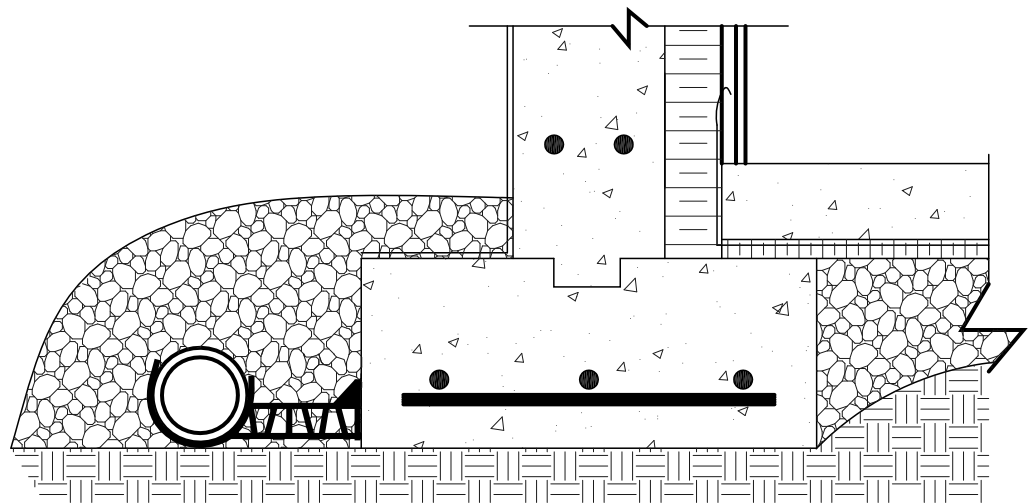


DESCRIPTION

Plastic alignment bracket for drain. Designed to support and align the drain pipe in accordance with the 2010 Quebec Construction Code, Chapter 1 - Building, article 9.14.3.3., Paragraph 4, the technical sheets of series 3 of the APCHQ and the GCR sheets for flexible ducts and rigid (according to BNQ standard).

BENEFITS

- Ensures installation in accordance with the National Building Code as well as better quality control.
- Quebec innovation made from recycled materials.
- Prevents deviations from the drain causing inadequate drainage.
- Ensures adequate coverage of clean stones and better quality control of the backfill.



RECOMMENDED USES AND INSTALLATION

3 USES:

1. Installation of the flexible drain 6" from the footing
2. Installation of the rigid drain 8" from the center in case of iron ocher (according to BNQ standard)
3. Provides vertical support for drainage chimneys

Recommended installation: Spacing every 48 inches.

In the presence of uneven ground, a spacing of 24 inches is recommended.

FIXATION: Simply secure the drain bracket with 2 1-1/2" concrete nails.