

DATA SHEET

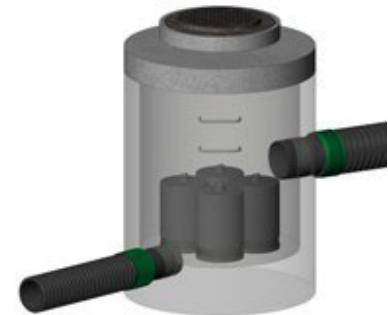
STORMFILTER®

PRODUCT DESCRIPTION : Stormwater treatment system by filtration.

FUNCTION : Stormwater filtration system containing rechargeable media-filled cartridges that retain particles and sediments, and adsorb pollutants such as phosphorus, oils and fats, soluble metals, nutrients, and organics*.

MANUFACTURING STANDARDS : Pre-cast concrete, reinforced steel and rubber gasket meeting the requirements of BNQ 2622-420.

RAW MATERIAL : Structure : 30 MPa concrete after 28 days
Collector: ABS and PVC thermoplastic polymer
Cartridge : linear low density polyethylene (LLDPE) and welded metal fabric, covered with a bonded PVC coating



STORMFILTER
Manhole of 1500 mm (60 in) in diameter

TECHNICAL DATA : Manhole: 900 mm (36 in) to 3600 mm (144 in) in diameter
Vault**: 2.4 m x 1.8 m (8 ft x 6 ft) to 2.4 m x 7.2 m (8 ft x 24 ft)
Standard height: custom-made
Structural strength: CAN/CSA - S6 - 02 (CL-625) and AASHTO (H-25 et HS-25)
Each device is custom designed, according to site conditions, once the manufacturing drawings have been made, we will be able to confirm the exact weights of each part.

TECHNICAL DATA TABLE FILTER CARTRIDGES

Model	Diameter		Height		Treatment flow				Weight				Minimum driving head ³		Sediment storage		
					PhosphoSorb ¹ media		ZPG ² media		PhosphoSorb media		ZPG media				Flow rate	Storage capacity	
	mm	in	mm	in	l/s	ft ³ /s	l/s	ft ³ /s	kg	lb	kg	lb	mm	in	gpm/sf	kg	lb
Small ⁴	300	12	450	18	0,54	0,019	0,31	0,025	24	53	43,1	95	550	21,7		8,2	18,1
Medium	300	12	450	18	0,79	0,028	0,48	0,017	24	53	43,1	95	700	27,6	1,67	12,3	27,1
Large	300	12	675	27	1,19	0,042	0,71	0,011	34	75	65,8	145	930	36,6		18,4	40,6

Note 1 : As approved by the MELCC with a load rate of 1.67 gpm/sf.

Note 2 : As approved by the MELCC with a load rate of 1.00 gpm/sf .

Note 3 : The minimum driving head is set according to the standard conditions of a site. In some situations, it is possible to have a lower load height. Please contact your Soleno representative for details.

Note 4 : The small cartridge's height looks like the medium cartridge's height. However, its design allows it to have an effective height different from its actual height, ie 300 mm (12 in).

Note 5 : Values in the table are approximate and may change without notice.

* Organic matter will be absorbed by the ZPG filtering media only.

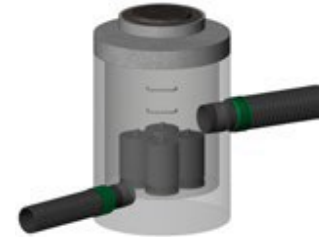
** With or without an integrated bypass structure.

DATA SHEET

STORMFILTER® (CONT'D)

TECHNICAL DATA TABLE MANHOLES

Model	Nominal dia. of the concrete structure		Standard height		Max. number of cartridges	Surface access ¹			Heaviest component weight ²	
	mm	in	m	ft		Un.	Un.	mm	in	kg
MH48	1200	48	1,8	6	3	1	750	30	3440	7584
MH60	1500	60	1,8	6	4	1	750	30	5160	11376
MH72	1800	72	1,8	6	7	1	750	30	7770	17130
MH96	2400	96	1,8	6	14	1	750	30	13630	30049



Model shown: MH60

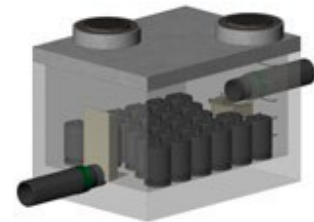
Note 1 : The access diameters may vary in the case of a height lower than the standard height of the structure. The use of an access hatch could be suggested. Please contact your Soleno representative for details.

Note 2 : Each device is custom designed, according to site conditions, once the manufacturing drawings have been made, we will be able to confirm the exact weights of each part.

Note 3 : Values in the table are approximate and may change without notice.

TECHNICAL DATA TABLE VAULTS

Model	Nominal dia. of the concrete structure		Standard height		Max. number of cartridges	Surface access ¹			Heaviest component weight ³	
	m	ft	m	ft		Un.	Un.	mm	in	kg
V0806	2,4 x 1,8	8 x 6	1,8	6	12	2	750	30	14400	31746
V0811	2,4 x 3,3	8 x 11	1,8	6	26	2	750	30	26100	57540
V0814	2,4 x 4,2	8 x 14	1,8	6	34	2	750	30	31300	69004
V0816	2,4 x 4,8	8 x 16	1,8	6	39	2	750	30	34500	76059
V0818	2,4 x 5,4	8 x 18	1,8	6	44	2	750	30	42500	93696
V0820	2,4 x 6,0	8 x 20	1,8	6	51	see note 2			46300	102073
V0822	2,4 x 6,6	8 x 22	1,8	6	56	see note 2			22800	50265
V0824	2,4 x 7,2	8 x 24	2	6	61	see note 2			56700	125001



Model shown: V0811

Note 1 : The access diameters may vary in the case of a height lower than the standard height of the structure. The use of an access hatch could be suggested. Please contact your Soleno representative for details.

Note 2 : One surface access of 750 mm (30 in) and one access hatch.

Note 3 : Each device is custom designed, according to site conditions, once the manufacturing drawings have been made, we will be able to confirm the exact weights of each part.

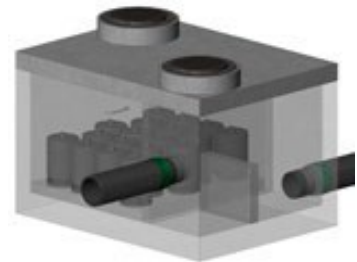
Note 4 : Values in the table are approximate and may change without notice.

DATA SHEET

STORMFILTER® (CONT'D)

TECHNICAL DATA TABLE VAULTS WITH AN INTEGRATED BYPASS STRUCTURE (PEAK DIVERSION)

Model	Nominal dia. of the concrete structure		Standard height		Max. number of cartridges	Surface access ¹		Heaviest component weight ²		
	m	ft	m	ft		Un.	Un.	mm	in	kg
PD0806	2,4	1,8	8	6	8	2	750	30	15400	33951
PD0612	1,8	3,6	6	12	14	2	750	30	22300	49163
PD0811	2,4	3,3	8	11	18	2	750	30	27500	60627
PD0814	2,4	4,2	8	14	25	2	750	30	32700	72090
PD0816	2,4	4,8	8	16	33	2	750	30	35900	79145
PD0818	2,4	5,4	8	18	38	2	750	30	43900	93782
PD0820	2,4	6,0	8	20	43	3	750	30	47700	105159
PD0822	2,4	6,6	8	22	48	3	750	30	24200	53351
PD0824	2,4	7,2	8	24	55	3	750	30	58100	128087



Model shown: PD0811

Note 1 : The access diameters may vary in the case of a height lower than the standard height of the structure. The use of an access hatch could be suggested. Please contact your Soleno representative for details.

Note 2 : Each device is custom designed, according to site conditions, once the manufacturing drawings have been made, we will be able to confirm the exact weights of each part.

Note 3 : Values in the table are approximate and may change without notice.

APPLICATIONS : Control of TSS, nutrients, soluble metals and hydrocarbons
Storm water sewer
Treatment and pretreatment

OPTIONS : Special fittings available on request
Adjustable frame and cover
Collecting grate(deflector pan includes)
Flow regulators
Access hatch